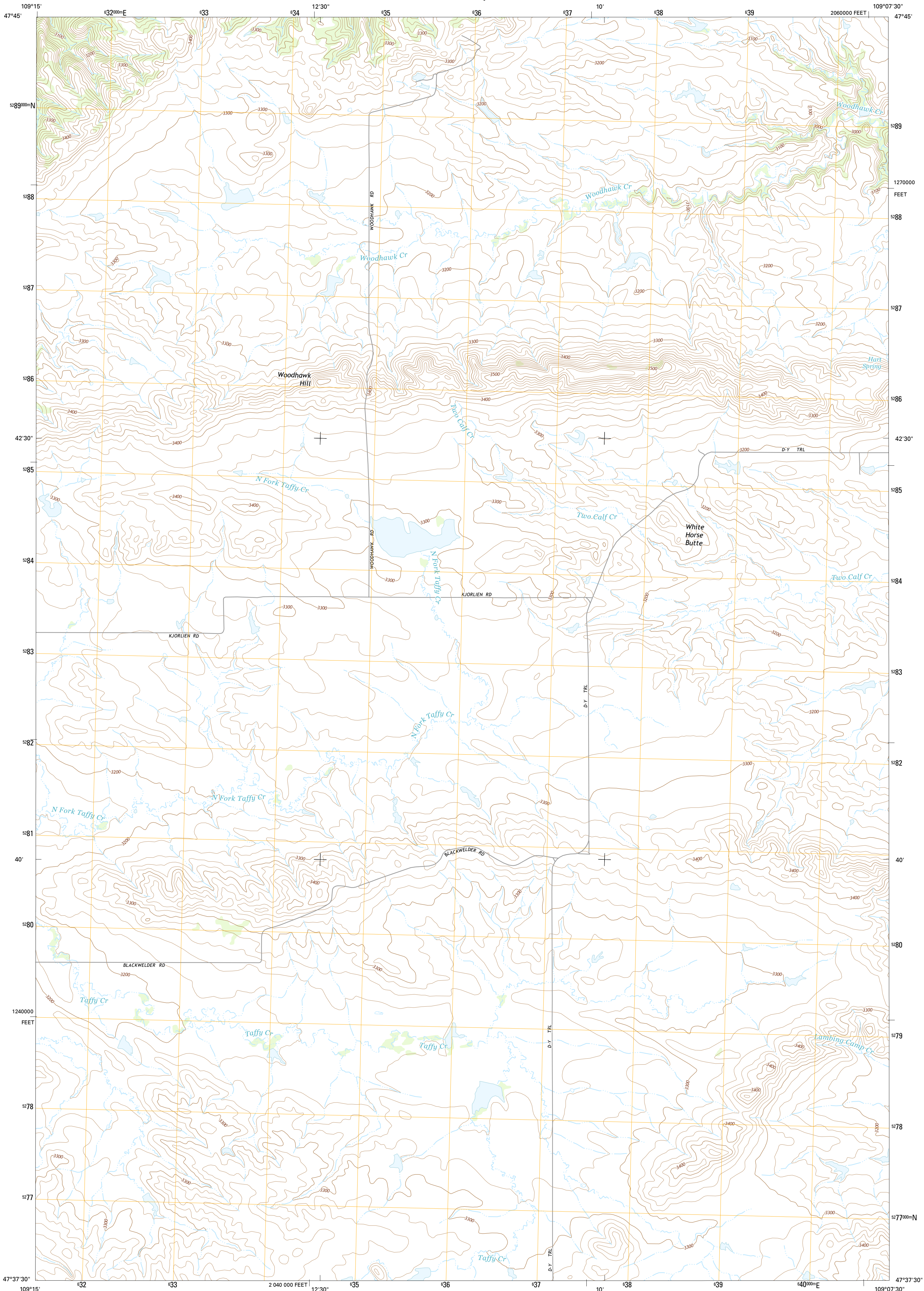




U.S. DEPARTMENT OF THE INTERIOR
U.S. GEOLOGICAL SURVEY



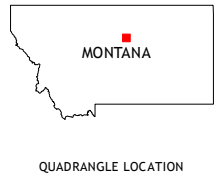
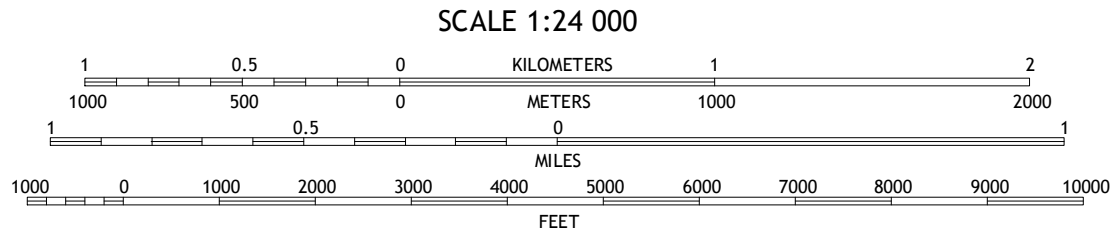
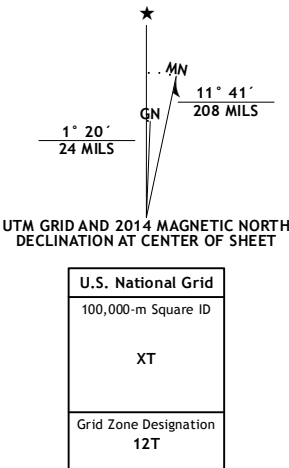
WOODHAWK HILL QUADRANGLE
MONTANA-FERGUS CO.
7.5-MINUTE SERIES



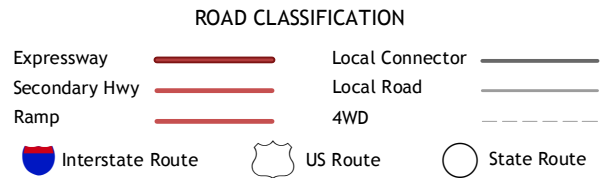
Produced by the United States Geological Survey
North American Datum of 1983 (NAD83)
World Geodetic System of 1984 (WGS84). Projection and
1 000-meter grid: Universal Transverse Mercator, Zone 12T
10 000-foot ticks: Montana Coordinate System of 1983

This map is not a legal document. Boundaries may be
generalized for this map scale. Private lands within government
reservations may not be shown. Obtain permission before
entering private lands.

Imagery.....NAIP.....July 2011
Roads.....HIRE.....02/13
Names.....GNIS.....2013
Hydrography.....National Hydrography Dataset, 2011
Contours.....National Elevation Dataset, 2000
Boundaries.....Multiple sources; see metadata file 1972 - 2013
Public Land Survey System.....BLM, 2011



QUADRANGLE LOCATION



1	2	3
4	5	
6	7	8

ADJOINING QUADRANGLES

1 Leroy
2 Bird Rapids
3 Sturgeon Island
4 Taffy Ridge
5 Reppe Butte
6 Winfred East
7 Gerhard Corner
8 Bakers Spring

WOODHAWK HILL, MT
2014

