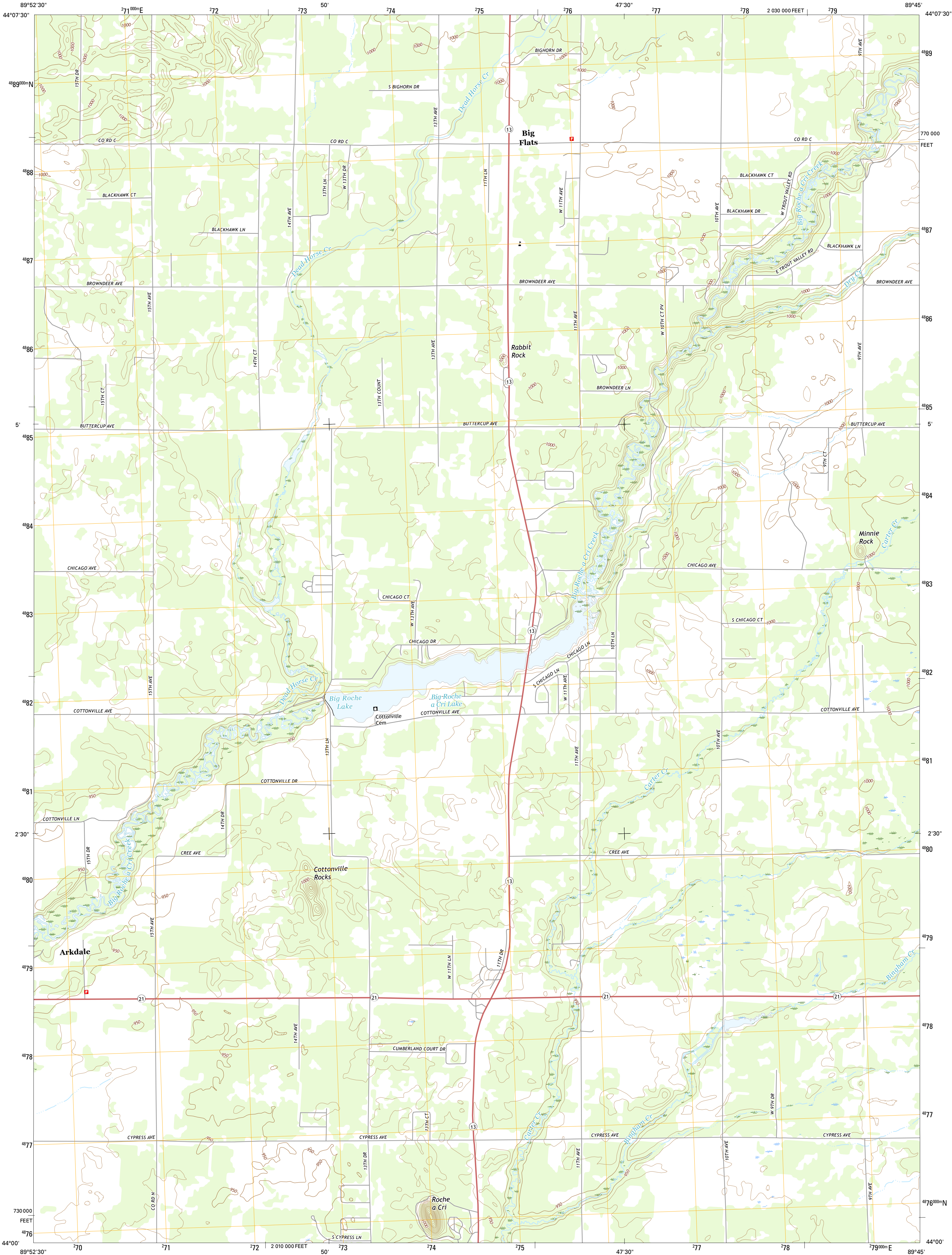




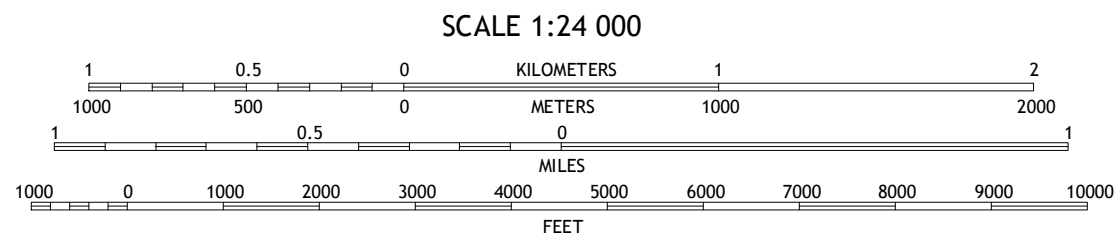
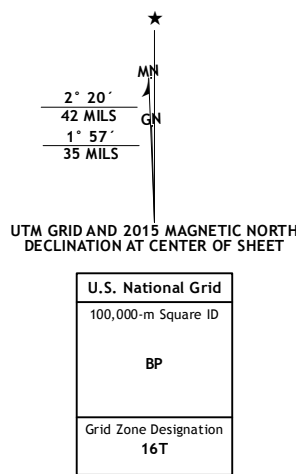
U.S. DEPARTMENT OF THE INTERIOR
U.S. GEOLOGICAL SURVEY



ROCHE A CRI QUADRANGLE
WISCONSIN-ADAMS CO.
7.5-MINUTE SERIES



Produced by the United States Geological Survey
North American Datum of 1983 (NAD83)
World Geodetic System of 1984 (WGS84). Projection and
1 000-meter grid: Universal Transverse Mercator, Zone 16T
10 000-foot ticks: Wisconsin Coordinate System of 1983 (south
zone)
This map is not a legal document. Boundaries may be
generalized for this map scale. Private lands within government
reservations may not be shown. Obtain permission before
entering private lands.
Imagery.....NAIP, July 2013
Roads.....U.S. Census Bureau, 2014 - 2015
Names.....GNIS, 2015
Hydrography.....National Hydrography Dataset, 2013
Contours.....National Elevation Dataset, 2008
Boundaries.....Multiple sources: see metadata file 1972 - 2015
Public Land Survey System.....BLM, 2014
Wetlands.....FWS National Wetlands Inventory 1977 - 2014



1	2	3	4	5	6	7	8
1 Arkdale NW	2 Arkdale NE	3 Coloma NW	4 Arkdale	5 Coloma SW	6 Delwood	7 Adams	8 Grand Marsh

ROAD CLASSIFICATION	
Expressway	Local Connector
Secondary Hwy	Local Road
Ramp	4WD
Interstate Route	US Route
	State Route

ROCHE A CRI, WI
2015

