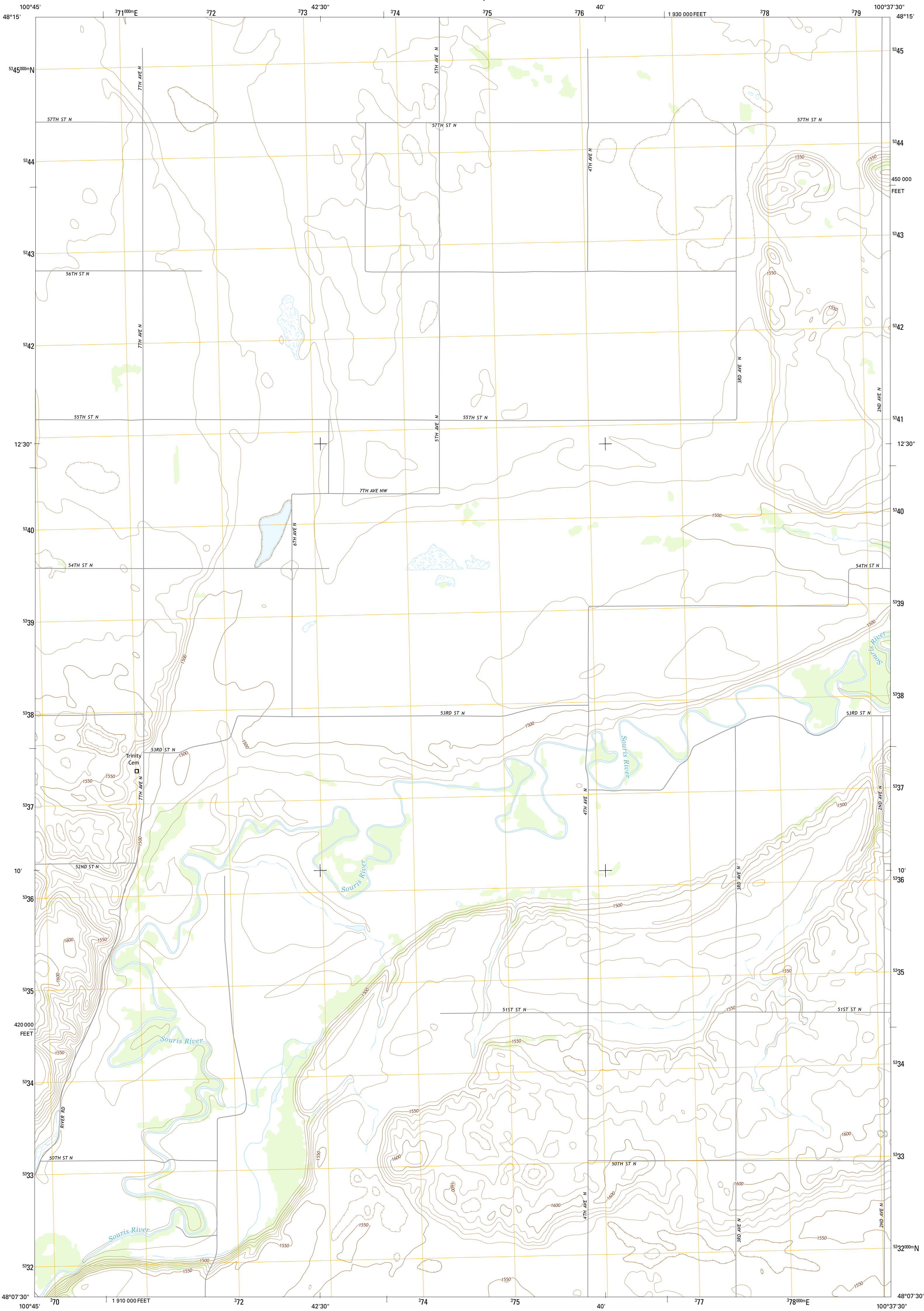




U.S. DEPARTMENT OF THE INTERIOR  
U.S. GEOLOGICAL SURVEY



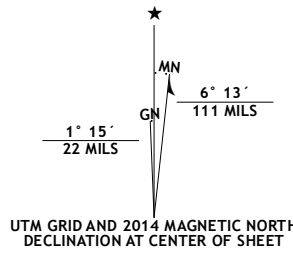
KARLSRUHE NW QUADRANGLE  
NORTH DAKOTA-MCHENRY CO.  
7.5-MINUTE SERIES



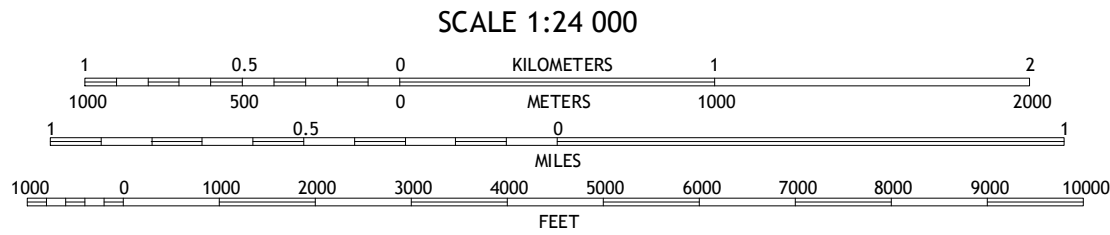
Produced by the United States Geological Survey  
North American Datum of 1983 (NAD83)  
World Geodetic System of 1984 (WGS84). Projection and  
1 000-meter grid: Universal Transverse Mercator, Zone 14U  
10 000-foot ticks: North Dakota Coordinate System of 1983  
(north zone)

This map is not a legal document. Boundaries may be  
generalized for this map scale. Private lands within government  
reservations may not be shown. Obtain permission before  
entering private lands.

Imagery.....NAIP, July 2012  
Roads.....HERE, ©2013  
Names.....GNIS, 2013  
Hydrography.....National Hydrography Dataset, 2012  
Contours.....National Elevation Dataset, 1999  
Boundaries.....Multiple sources; see metadata file 1972 - 2013

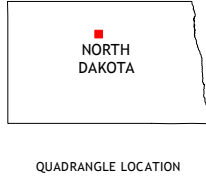


U.S. National Grid  
100,000-m Square ID  
LU  
Grid Zone Designation  
14U



CONTOUR INTERVAL 10 FEET  
NORTH AMERICAN VERTICAL DATUM OF 1988

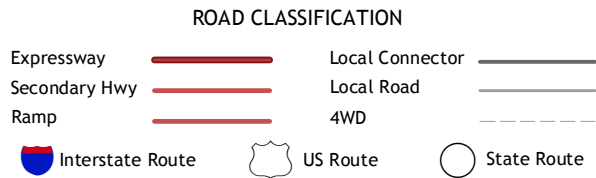
This map was produced to conform with the  
National Geospatial Program US Topo Product Standard, 2011.  
A metadata file associated with this product is draft version 0.6.16



QUADRANGLE LOCATION

1	2	3
4	5	6
7	8	9

1 Granville  
2 Riga  
3 Denbigh  
4 Simcoe  
5 Karlsruhe NE  
6 Voltaire  
7 Bergen  
8 Karlsruhe



KARLSRUHE NW, ND  
2014

