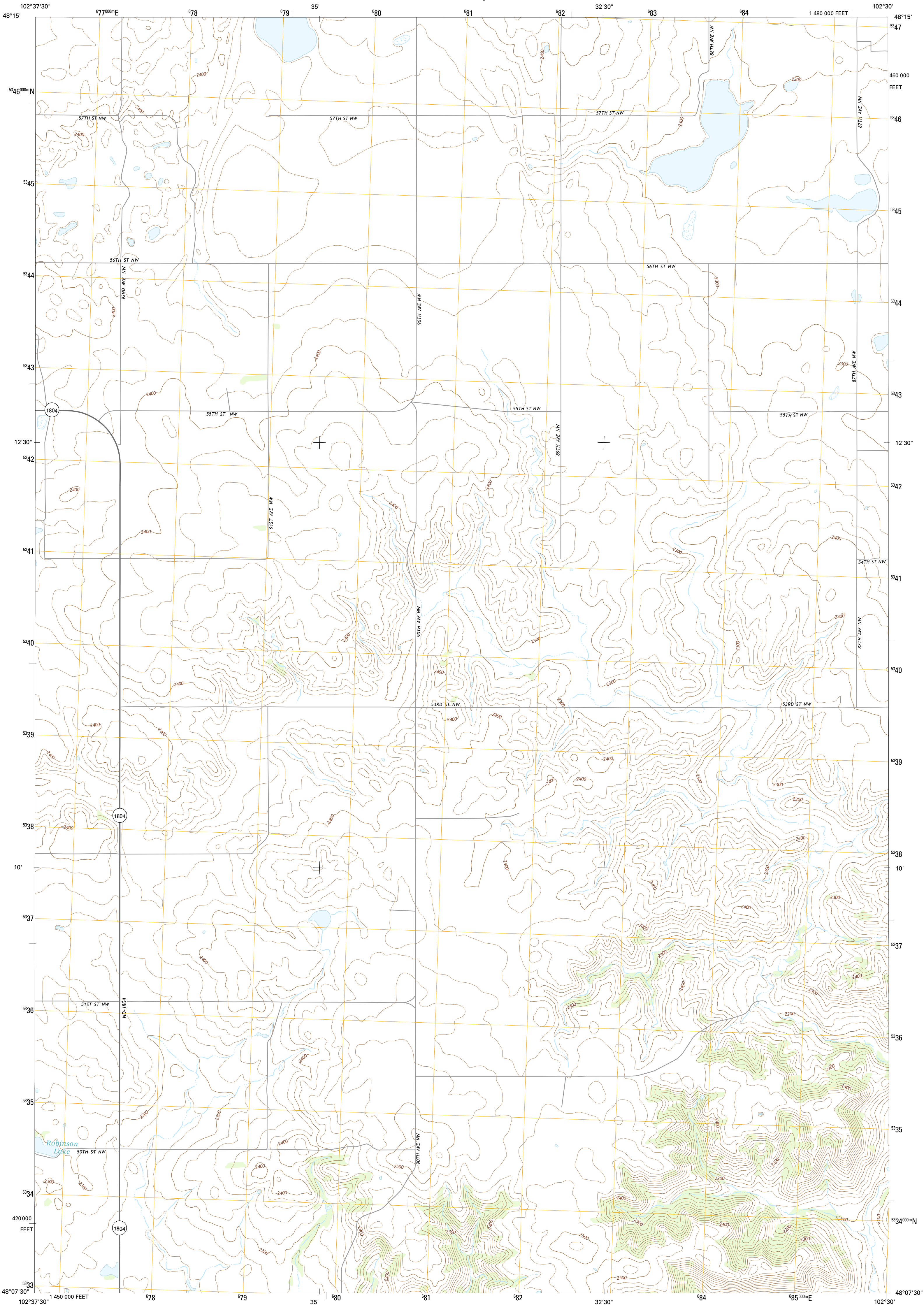




U.S. DEPARTMENT OF THE INTERIOR
U.S. GEOLOGICAL SURVEY



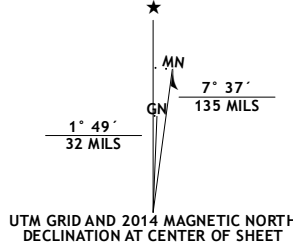
ROBINSON LAKE QUADRANGLE
NORTH DAKOTA-MOUNTAIN CO.
7.5-MINUTE SERIES



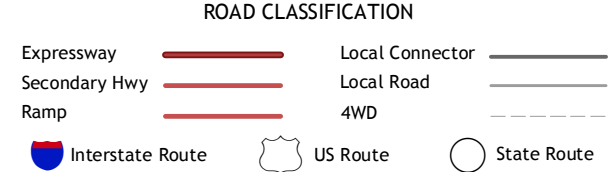
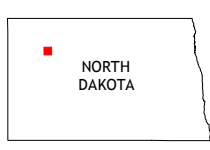
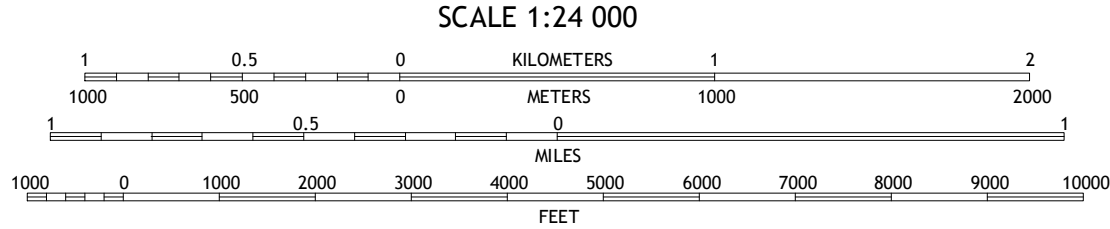
Produced by the United States Geological Survey
North American Datum of 1983 (NAD83)
World Geodetic System of 1984 (WGS84). Projection and
1 000-meter grid: Universal Transverse Mercator, Zone 13U
10 000-foot ticks: North Dakota Coordinate System of 1983
(north zone)

This map is not a legal document. Boundaries may be
generalized for this map scale. Private lands within government
reservations may not be shown. Obtain permission before
entering private lands.

Imagery.....NAIP, June 2012
Roads.....HERE, ©2013
Names.....GNIS, 2013
Hydrography.....National Hydrography Dataset, 2012
Contours.....National Elevation Dataset, 2008
Boundaries.....Multiple sources; see metadata file 1972 - 2013



U.S. National Grid
100,000-m Square ID
PP
Grid Zone Designation
13U



1	2	3
4	5	6
7	8	

1 Mantou
2 Ross
3 Stanley
4 Rat Lake
5 Sikes Dam
6 Rat Lake SW
7 Rat Lake SE
8 Belden SW

ROBINSON LAKE, ND
2014

