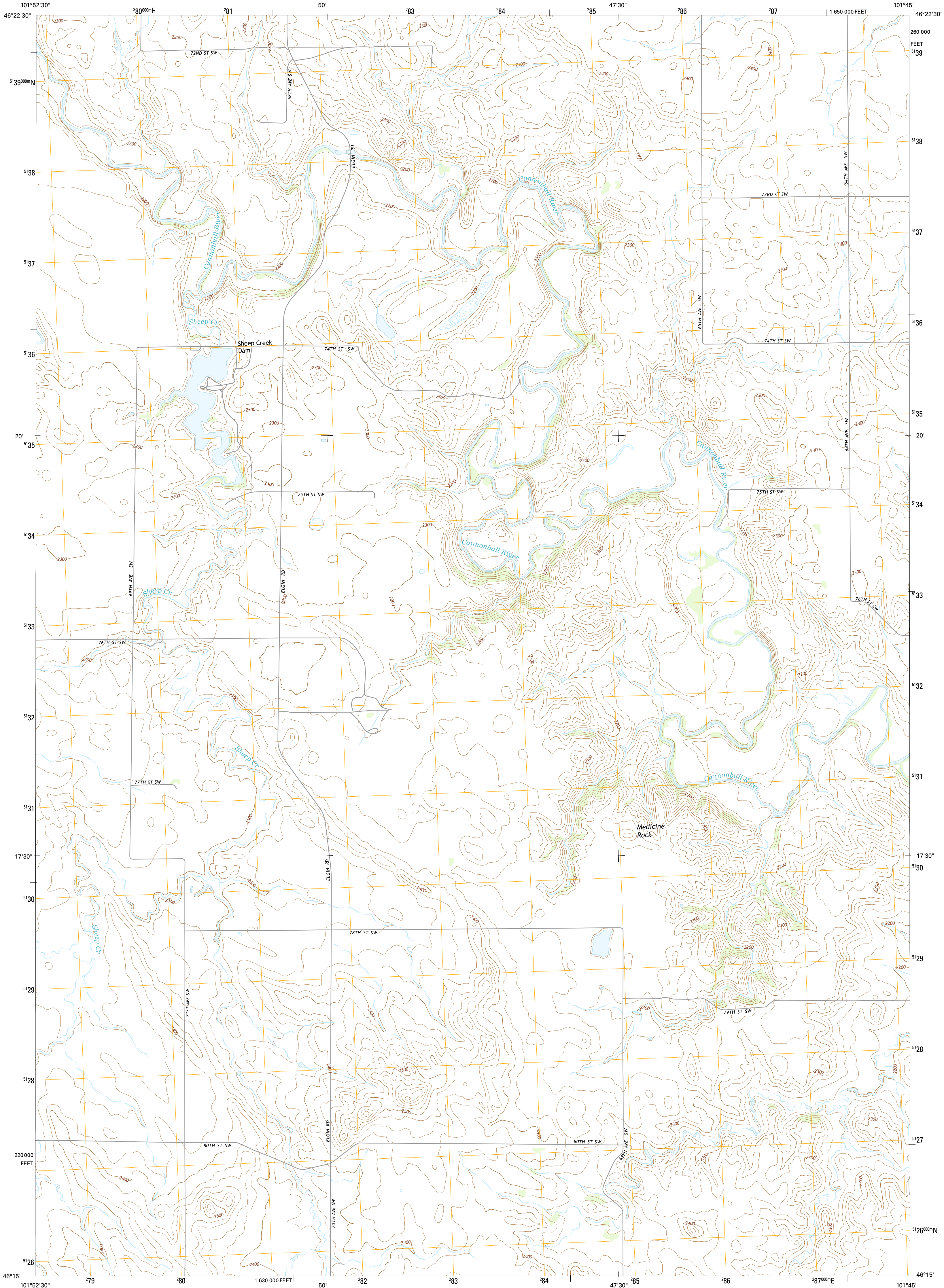




U.S. DEPARTMENT OF THE INTERIOR
U.S. GEOLOGICAL SURVEY



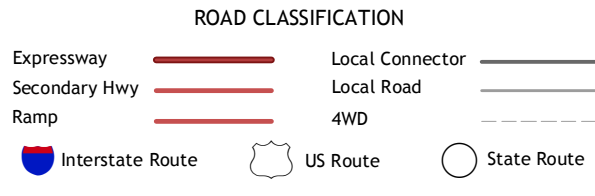
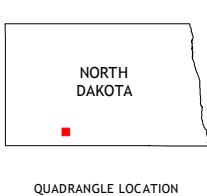
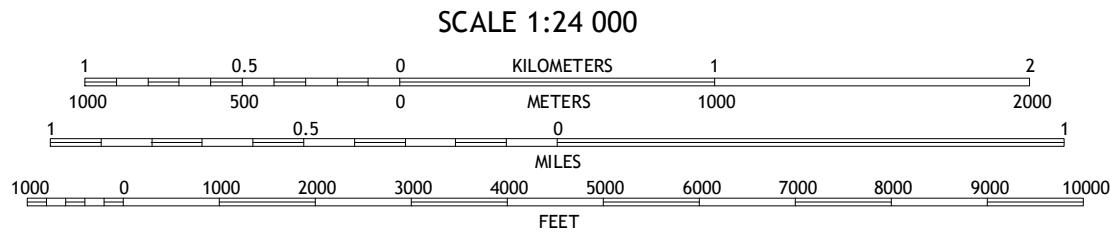
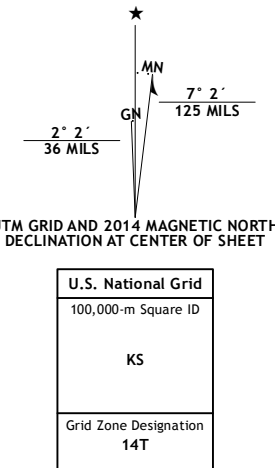
SHEEP CREEK DAM QUADRANGLE
NORTH DAKOTA-GRANT CO.
7.5-MINUTE SERIES



Produced by the United States Geological Survey
North American Datum of 1983 (NAD83)
World Geodetic System of 1984 (WGS84), Projection and
1 000-meter grid: Universal Transverse Mercator, Zone 14T
10 000-foot ticks: North Dakota Coordinate System of 1983
(south zone)

This map is not a legal document. Boundaries may be
generalized for this map scale. Private lands within government
reservations may not be shown. Obtain permission before
entering private lands.

Imagery.....NAIP July 2012
Roads.....HERE ©2013
Names.....GNIS, 2013
Hydrography.....National Hydrography Dataset, 2012
Contours.....National Elevation Dataset, 2009
Boundaries.....Multiple sources; see metadata file 1972 - 2013



1	2	3	1 New Leipzig North
4	5	2 Elgin	
6	7	3 Heil	
		4 New Leipzig South	
		5 Leith	
		6 Coffin Buttes	
		7 Pretty Rock Butte	
		8 Wheeler Hills	

SHEEP CREEK DAM, ND
2014

