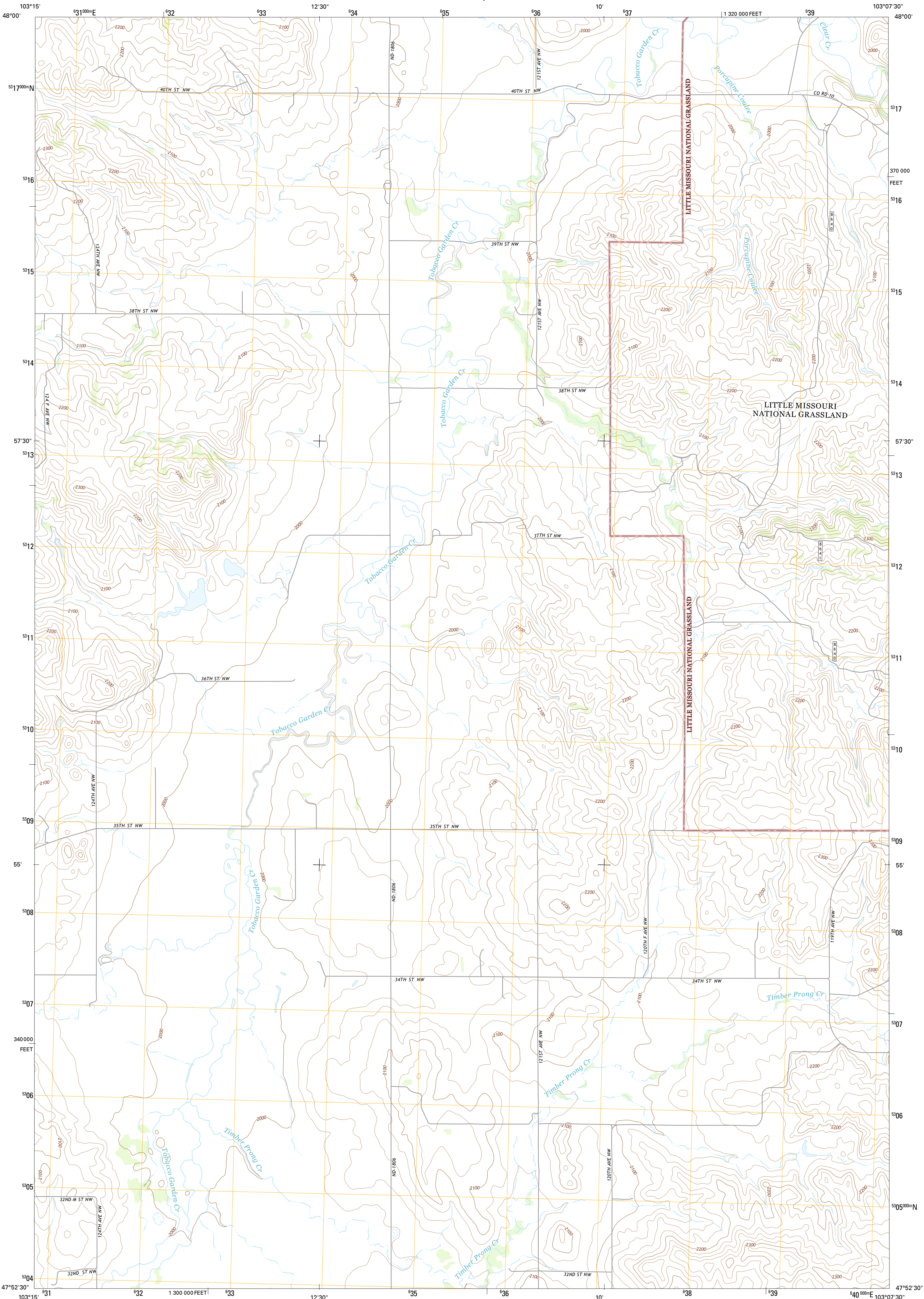




U.S. DEPARTMENT OF THE INTERIOR
U.S. GEOLOGICAL SURVEY



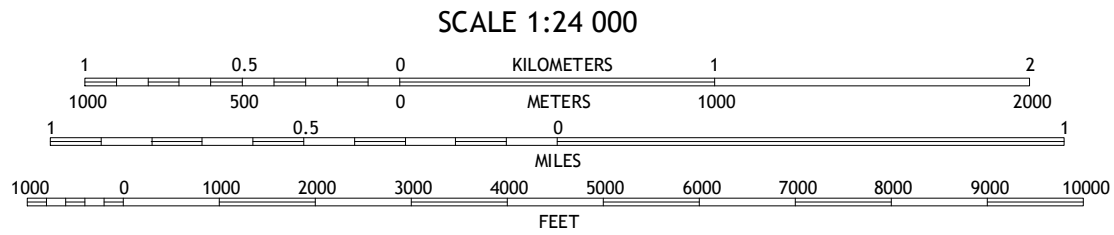
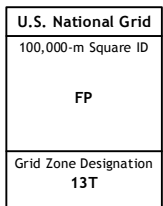
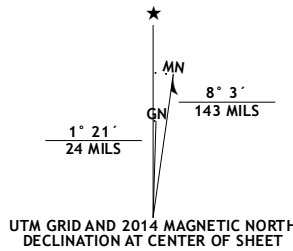
TIMBER PRONG CREEK QUADRANGLE
NORTH DAKOTA-MCKENZIE CO.
7.5-MINUTE SERIES



Produced by the United States Geological Survey
North American Datum of 1983 (NAD83)
World Geodetic System of 1984 (WGS84). Projection and
1 000-meter grid: Universal Transverse Mercator, Zone 13T
10 000-foot ticks: North Dakota Coordinate System of 1983
(north zone)

This map is not a legal document. Boundaries may be
generalized for this map scale. Private lands within government
reservations may not be shown. Obtain permission before
entering private lands.

Imagery.....NAIP, June 2012
Roads.....HERE, ©2013
Roads within US Forest Service Lands.....FSTopo Data
with limited Forest Service updates, 2013
Names.....GNIS, 2013
Hydrography.....National Hydrography Dataset, 2012
Contours.....National Elevation Dataset, 2005
Boundaries.....Multiple sources; see metadata file 1972 - 2013



CONTOUR INTERVAL 20 FEET
NORTH AMERICAN VERTICAL DATUM OF 1988
This map was produced to conform with the
National Geospatial Program US Topo Product Standard, 2011.
A metadata file associated with this product is draft version 0.6.16

1	2	3
4	5	6
7	8	9

1 Chris Creek
2 Banks
3 Tobacco Garden Bay
4 Watford City NE
5 Demicks Lake
6 Watford City
7 Schafer
8 Schafer SE

ROAD CLASSIFICATION	
Expressway	Local Connector
Secondary Hwy	Local Road
Ramp	4WD
Interstate Route	US Route
FS Primary Route	FS Passenger Route
	State Route
	FS High Clearance Route

Check with local Forest Service unit
for current travel conditions and restrictions.

TIMBER PRONG CREEK, ND
2014

