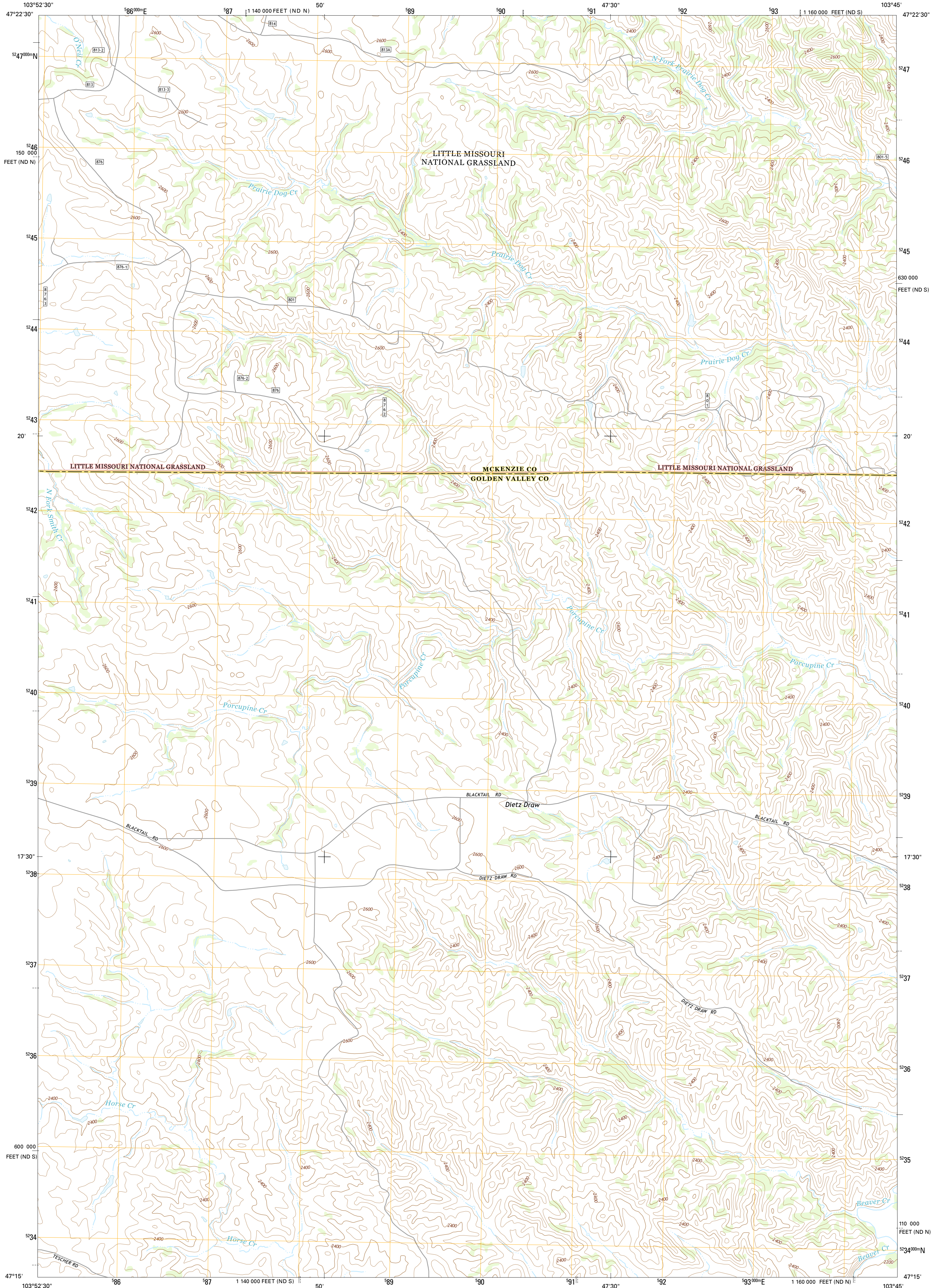




U.S. DEPARTMENT OF THE INTERIOR  
U.S. GEOLOGICAL SURVEY



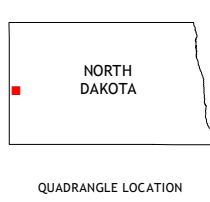
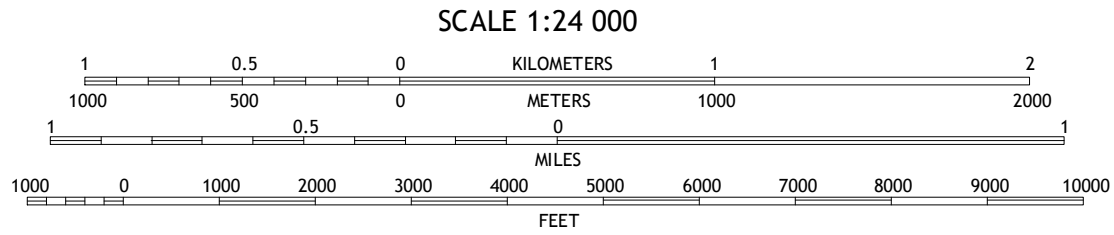
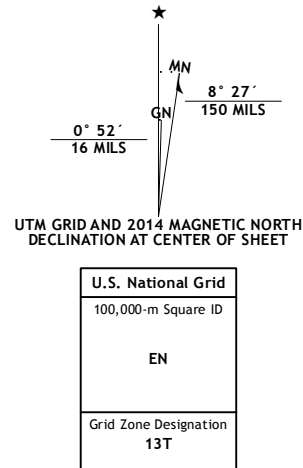
TROTTERS SE QUADRANGLE  
NORTH DAKOTA  
7.5-MINUTE SERIES



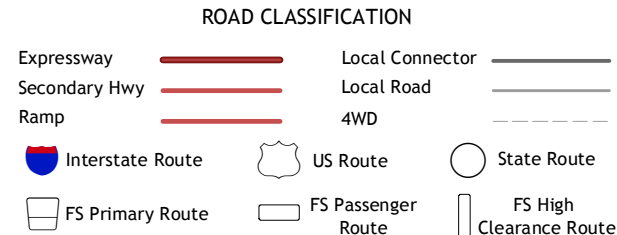
Produced by the United States Geological Survey  
North American Datum of 1983 (NAD83)  
World Geodetic System of 1984 (WGS84). Projection and  
1 000-meter grid: Universal Transverse Mercator, Zone 13T  
10 000-foot ticks: North Dakota Coordinate System of 1983  
(south and north zones)

This map is not a legal document. Boundaries may be  
generalized for this map scale. Private lands within government  
reservations may not be shown. Obtain permission before  
entering private lands.

Imagery.....NAIP, July 2012  
Roads.....HERE, ©2013  
Roads within US Forest Service Lands.....FS Topo Data  
with limited Forest Service updates, 2013  
Names.....GNIS, 2013  
Hydrography.....National Hydrography Dataset, 2012  
Contours.....National Elevation Dataset, 2001  
Boundaries.....Multiple sources; see metadata file 1972 - 2013



QUADRANGLE LOCATION



Check with local Forest Service unit  
for current travel conditions and restrictions.

TROTTERS SE, ND  
2014

1	2	3
4	5	6
7	8	9

ADJOINING QUADRANGLES

1 Squaw Gap  
2 Flat Rock Butte  
3 Cinnamon Creek  
4 Trotters  
5 Eagle Draw  
6 Hootowl Creek West  
7 Hootowl Creek East  
8 Roosevelt Creek West