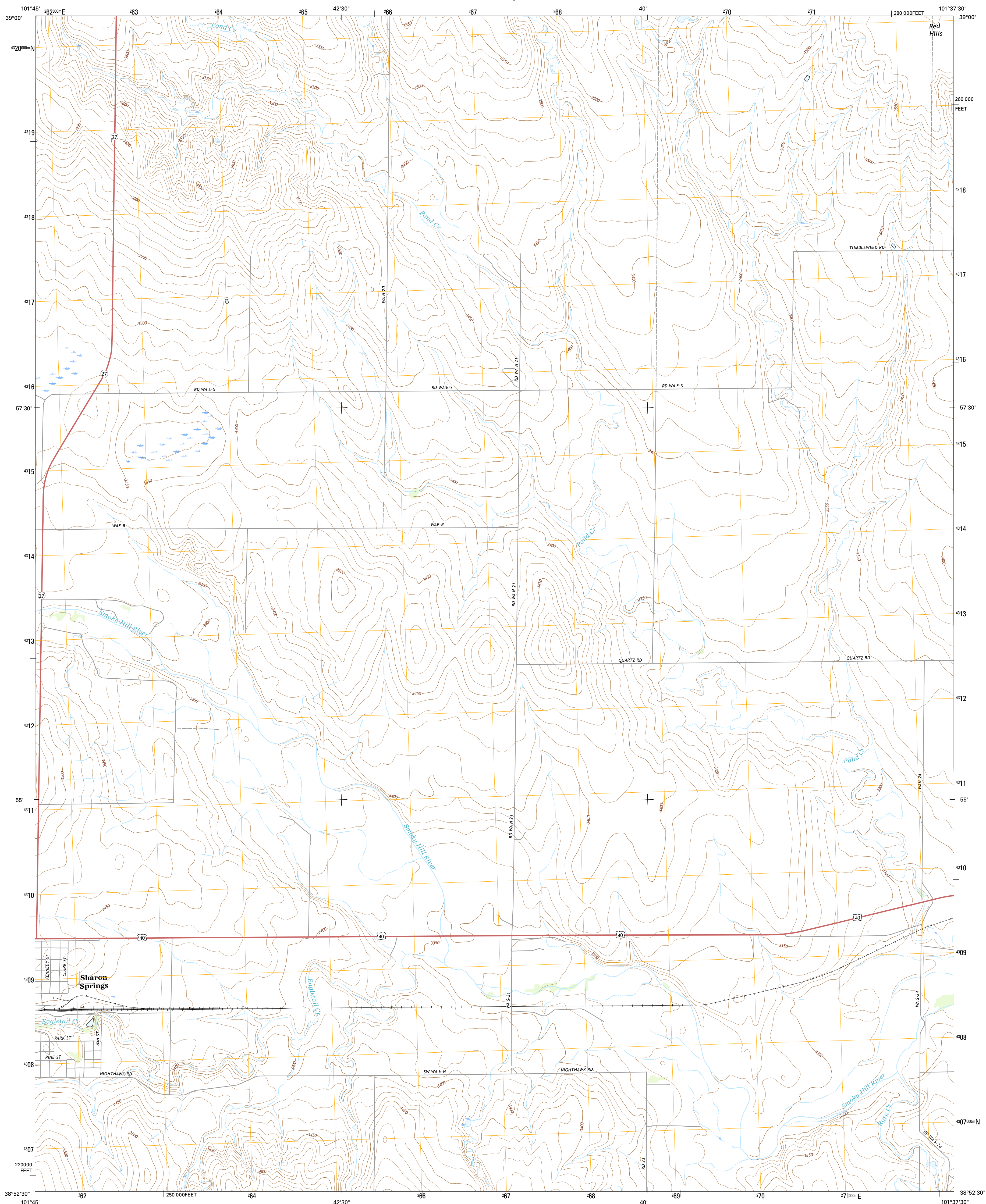




U.S. DEPARTMENT OF THE INTERIOR  
U.S. GEOLOGICAL SURVEY



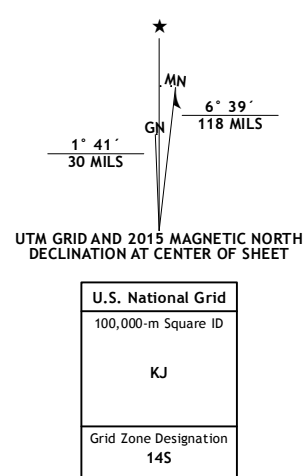
SHARON SPRINGS EAST QUADRANGLE  
KANSAS-WALLACE CO.  
7.5-MINUTE SERIES



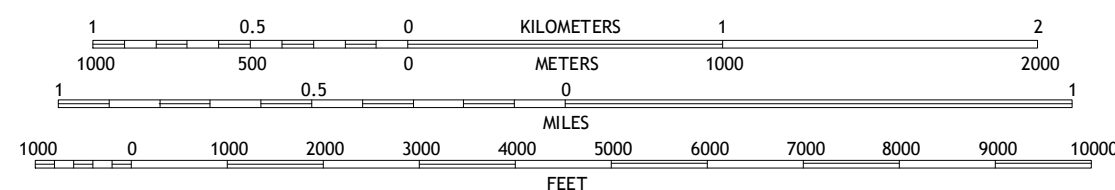
Produced by the United States Geological Survey  
North American Datum of 1983 (NAD83)  
World Geodetic System of 1984 (WGS84). Projection and  
1 000-meter grid: Universal Transverse Mercator, Zone 14S  
10 000-foot ticks: Kansas Coordinate System of 1983 (north  
zone)

This map is not a legal document. Boundaries may be generalized for this map scale. Private lands within government reservations may not be shown. Obtain permission before entering private lands.

Imagery.....	NALIP, July	2014
Roads.....	U.S. Census Bureau, 2014	2015
Names.....	GNIS,	2015
Hydrography.....	National Hydrography Dataset,	2015
Contours.....	National Elevation Dataset,	2006
Boundaries.....	Multiple sources; see metadata file 1972 -	2015
Public Land Survey System.....	BLM,	2015
Wetlands.....	FWS National Wetlands Inventory 1977 -	2014

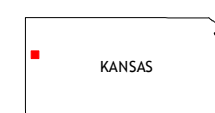


SCALE 1:24 000



CONTOUR INTERVAL 10 FEET  
NORTH AMERICAN VERTICAL DATUM OF 1988

This map was produced to conform with the  
National Geospatial Program US Topo Product Standard, 2011.  
A metadata file associated with this product is draft version 0.6.19






QUADRANGLE LOCATION

1	2	3	1 Horsethief Draw SE
4		5	2 Harris Draw West
6	7	8	3 Harris Draw East
			4 Sharon Springs West
			5 Wallace
			6 Spring Valley Ranch
			7 South Flats
			8 Harrison Flats

ADJOINING QUADRANGLE

## ROAD CLASSIFICATION

Expressway        Local Connector      
Secondary Hwy        Local Road      
Ramp        4WD      
 Interstate Route     US Route     State Route

SHARON SPRINGS EAST, KS  
2015

