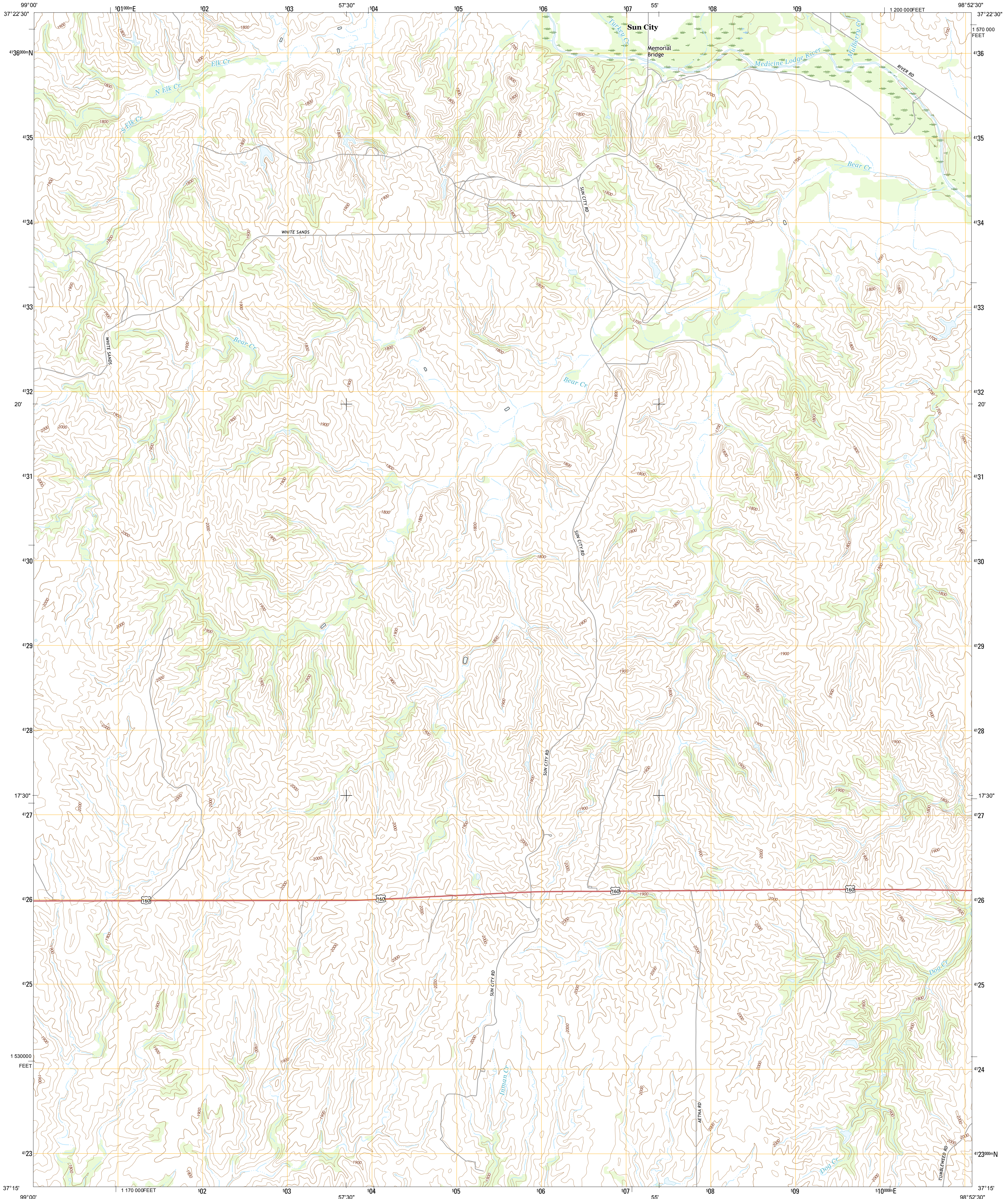




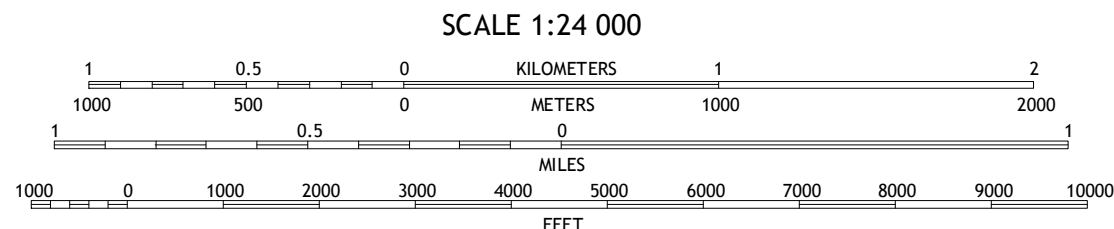
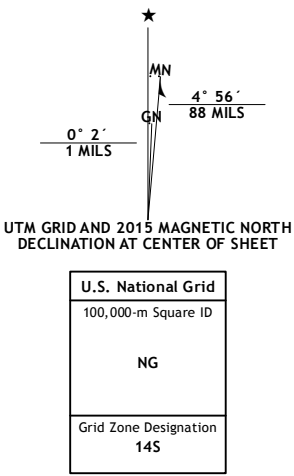
U.S. DEPARTMENT OF THE INTERIOR  
U.S. GEOLOGICAL SURVEY



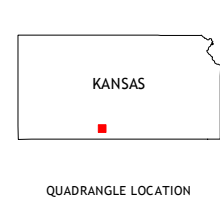
SUN CITY SW QUADRANGLE  
KANSAS-BARBER CO.  
7.5-MINUTE SERIES



Produced by the United States Geological Survey  
North American Datum of 1983 (NAD83)  
World Geodetic System of 1984 (WGS84). Projection and  
1000-meter grid: Universal Transverse Mercator, Zone 14S  
10 000-foot ticks: Kansas Coordinate System of 1983 (south  
zone)  
This map is not a legal document. Boundaries may be  
generalized for this map scale. Private lands within government  
reservations may not be shown. Obtain permission before  
entering private lands.  
Imagery.....NAIP, June 2014  
Roads.....U.S. Census Bureau, 2014 - 2015  
Names.....GNIS, 2015  
Hydrography.....National Hydrography Dataset, 2014  
Contours.....National Elevation Dataset, 2006  
Boundaries.....Multiple sources; see metadata file 1972 - 2015  
Public Land Survey System.....BLM, 2015  
Wetlands.....FWS National Wetlands Inventory 1977 - 2014



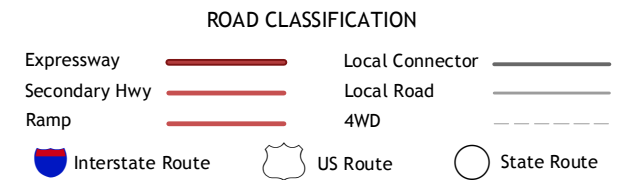
CONTOUR INTERVAL 20 FEET  
NORTH AMERICAN VERTICAL DATUM OF 1988  
This map was produced to conform with the  
National Geospatial Program US Topo Product Standard, 2011.  
A metadata file associated with this product is draft version 0.6.19



1	2	3
4	5	6
7	8	

ADJOINING QUADRANGLES

1 Belvidere  
2 Sun City  
3 Sun City NE  
4 Wilmore SE  
5 Lake City  
6 Indian Creek  
7 Deerhead  
8 Pump Creek



SUN CITY SW, KS  
2015

