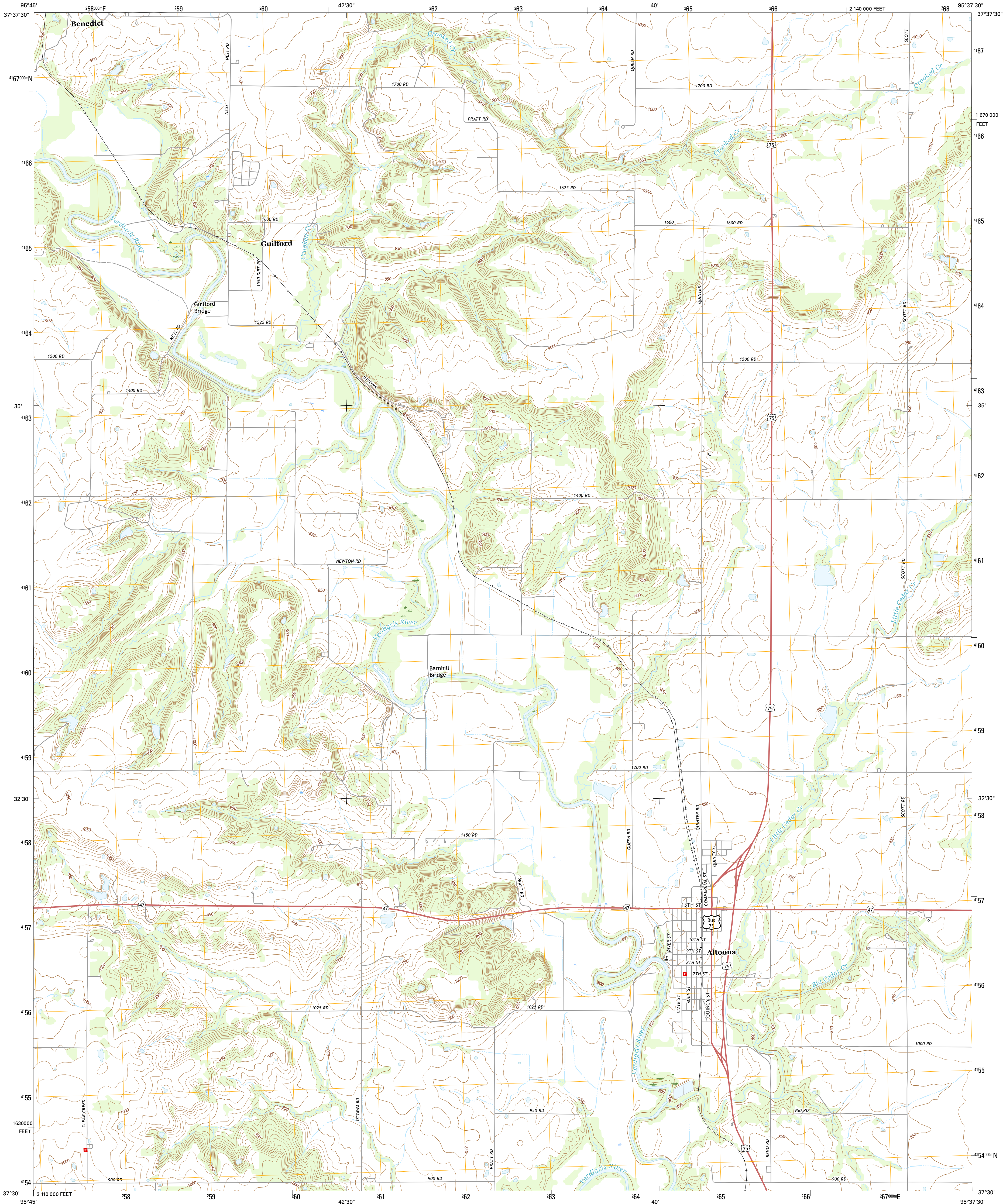




U.S. DEPARTMENT OF THE INTERIOR
U.S. GEOLOGICAL SURVEY



ALTOONA QUADRANGLE
KANSAS-WILSON CO.
7.5-MINUTE SERIES



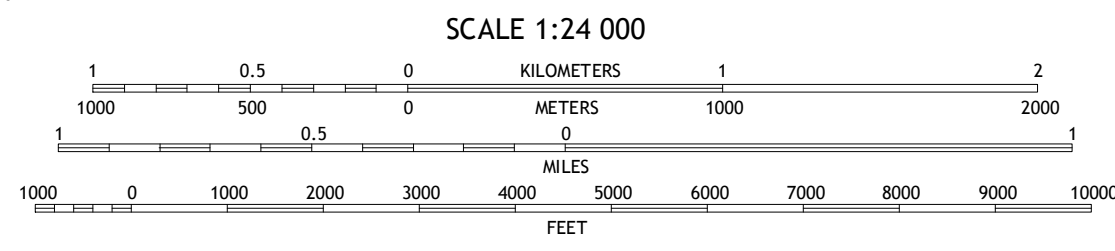
Produced by the United States Geological Survey
North American Datum of 1983 (NAD83)
World Geodetic System of 1984 (WGS84)
1 000-meter grid: Universal Transverse Mercator, Zone 15S
10 000-foot ticks: Kansas Coordinate System of 1983 (south zone)

This map is not a legal document. Boundaries may be generalized for this map scale. Private lands within government reservations may not be shown. Obtain permission before entering private lands.

Imagery.....NAIP, July 2014
Roads.....U.S. Census Bureau, 2014 - 2015
Names.....GNIS, 2015
Hydrography.....National Hydrography Dataset, 2014
Contours.....National Elevation Dataset, 2006
Boundaries.....Multiple sources; see metadata file 1972 - 2015
Public Land Survey System.....BLM, 2015
Wetlands.....FWS National Wetlands Inventory 1977 - 2014

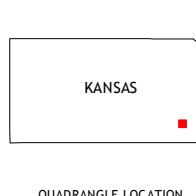
UTM GRID AND 2015 MAGNETIC NORTH DECLINATION AT CENTER OF SHEET

U.S. National Grid 100,000-m Square ID
TB
Grid Zone Designation 15S



CONTOUR INTERVAL 10 FEET
NORTH AMERICAN VERTICAL DATUM OF 1988

This map was produced to conform with the National Geospatial Program US Topo Product Standard, 2011. A metadata file associated with this product is draft version 0.6.19



1	2	3
4	5	6
7	8	9

ADJOINING QUADRANGLES

- 1 Middletown
- 2 Buffalo
- 3 Villas
- 4 Fredonia
- 5 Five Mounds
- 6 Lafontaine
- 7 Neodesha
- 8 Morehead

ROAD CLASSIFICATION

Expressway
Secondary Hwy
Ramp
Interstate Route
Local Connector
Local Road
4WD
US Route
State Route

**ALTOONA, KS
2015**

