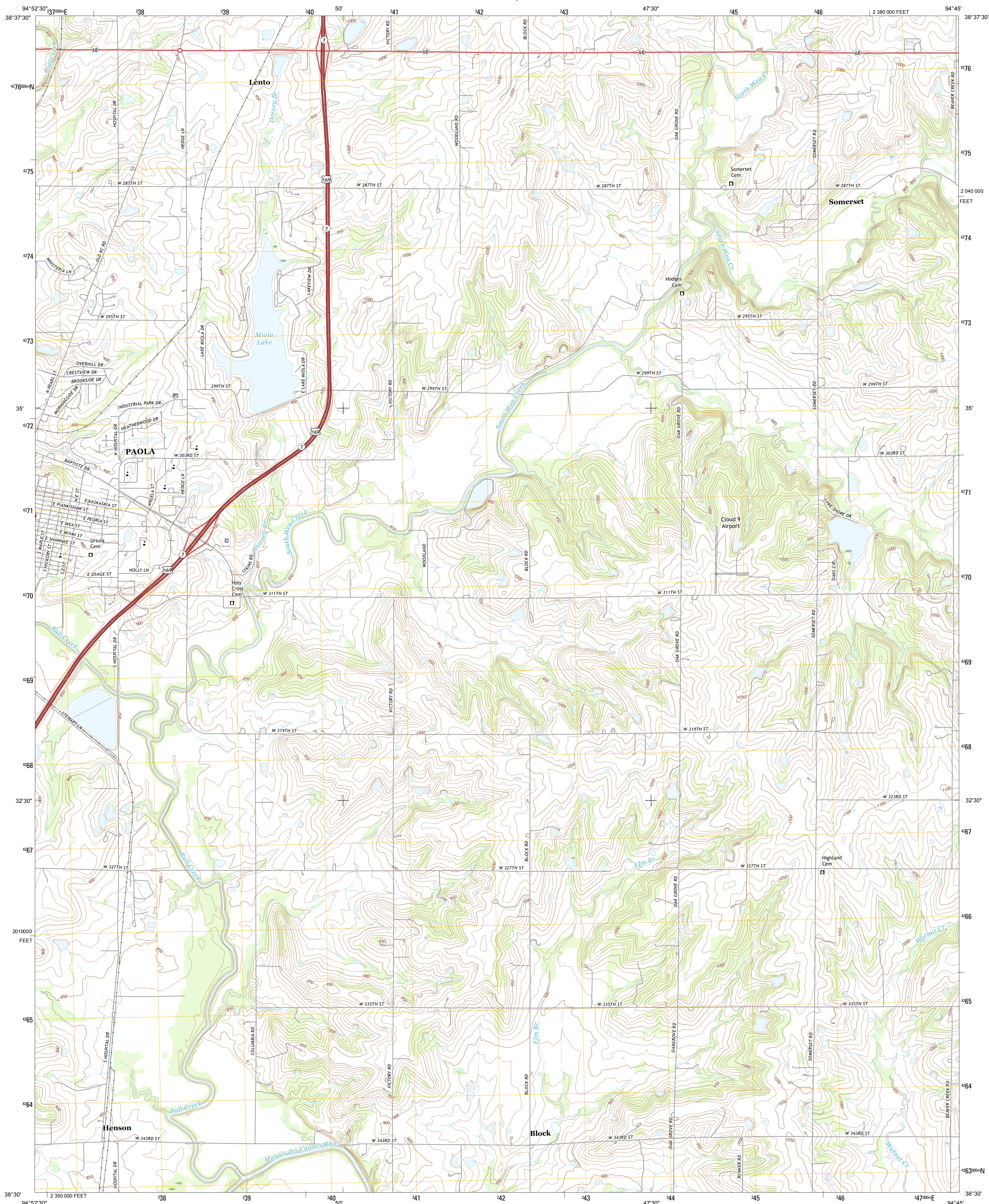




U.S. DEPARTMENT OF THE INTERIOR
U.S. GEOLOGICAL SURVEY



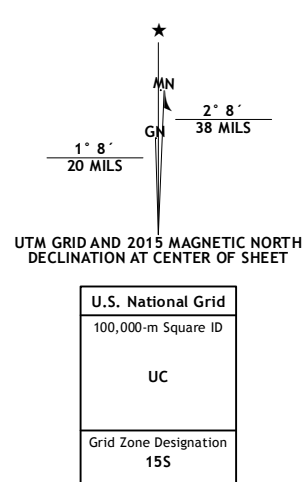
PAOLA EAST QUADRANGLE
KANSAS-MIAMI CO.
7.5-MINUTE SERIES



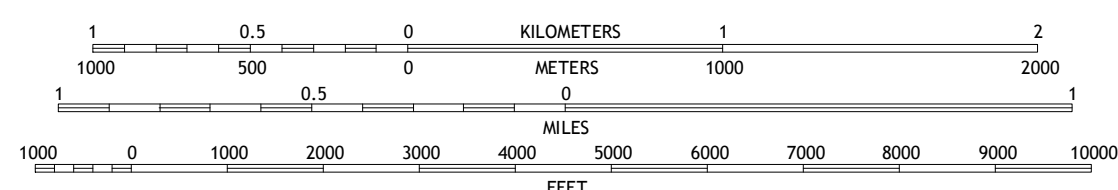
Produced by the United States Geological Survey
North American Datum of 1983 (NAD83)
World Geodetic System of 1984 (WGS84). Projection and
1 000-meter grid: Universal Transverse Mercator, Zone 15S
10 000-foot ticks: Kansas Coordinate System of 1983 (south
zone)

This map is not a legal document. Boundaries may be generalized for this map scale. Private lands within government reservations may not be shown. Obtain permission before entering private lands.

Imagery.....	NALIP, June	2014
Roads.....	U.S. Census Bureau, 2014	2015
Names.....	GNIS,	2015
Hydrography.....	National Hydrography Dataset,	2014
Contours.....	National Elevation Dataset,	2008
Boundaries.....	Multiple sources; see metadata file	1972 - 2015
Public Land Survey System.....	BLM,	2015
Wetlands.....	FWS National Wetlands Inventory	1977 - 2014

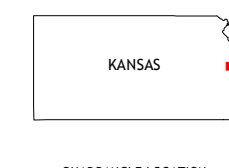


SCALE 1:24 000

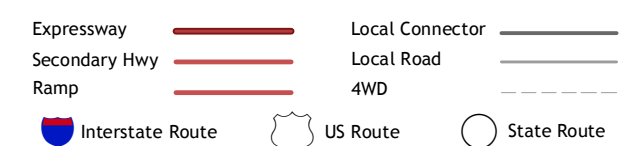


CONTOUR INTERVAL 10 FEET
NORTH AMERICAN VERTICAL DATUM OF 1988

This map was produced to conform with the
National Geospatial Program US Topo Product Standard, 2011.
A metadata file associated with this product is draft version 0.6.19



ROAD CLASSIFICATION



1	2	3
4		5
6	7	8

ADJOINING QUADRANGLES

- 1 Antioch
- 2 Spring Hill
- 3 Bucyrus
- 4 Paola West
- 5 Louisburg
- 6 Osawatomie
- 7 Fontana
- 8 New Lancaster

PAOLA EAST, KS
2015

