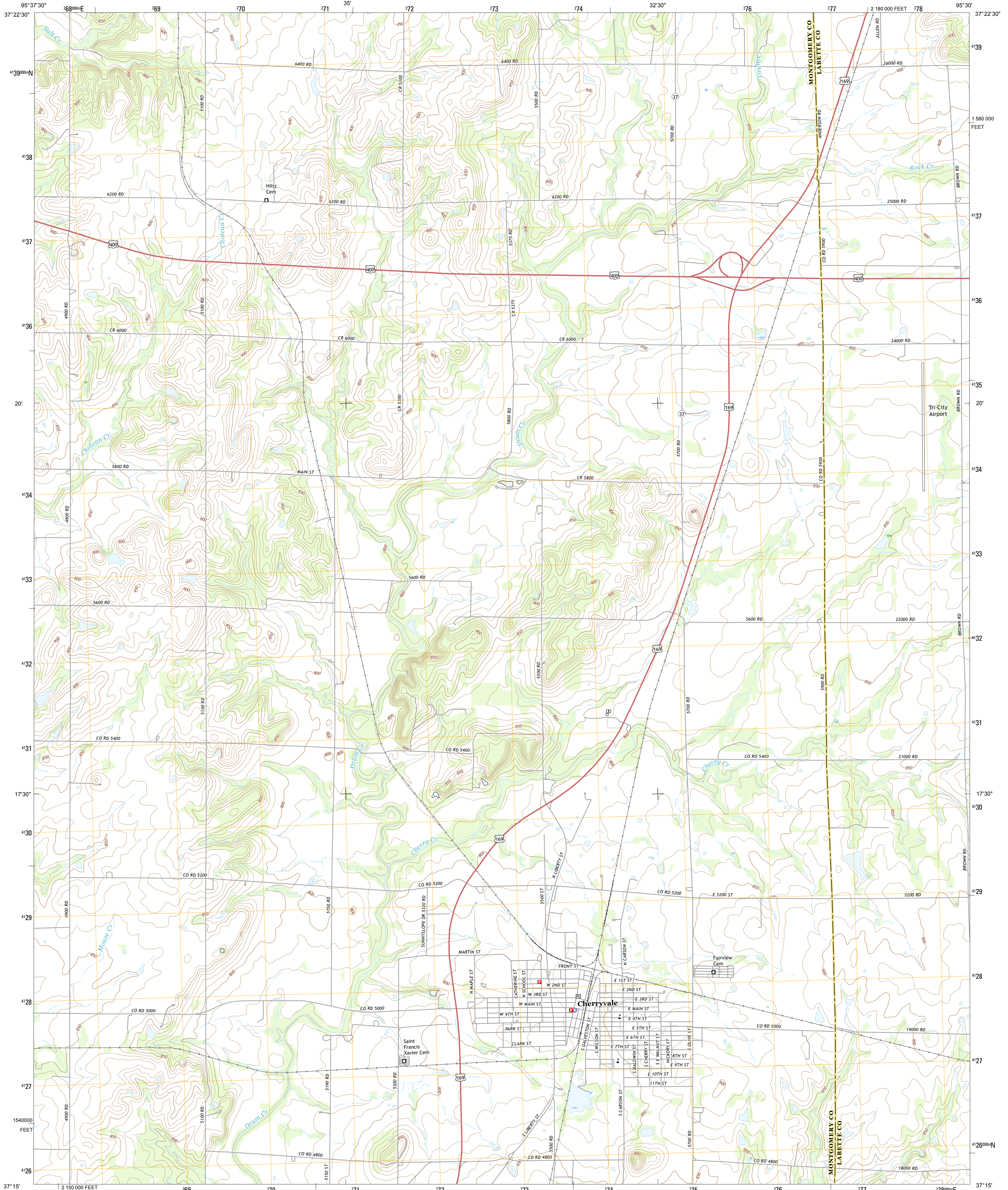




U.S. DEPARTMENT OF THE INTERIOR  
U.S. GEOLOGICAL SURVEY



CHERRYVALE QUADRANGLE  
KANSAS  
7.5-MINUTE SERIES



Produced by the United States Geological Survey  
North American Datum of 1983 (NAD83)  
World Geodetic System of 1984 (WGS84). Projection and  
1 000-meter grid: Universal Transverse Mercator, Zone 15S  
10 000-foot ticks: Kansas Coordinate System of 1983 (south  
zone)

This map is not a legal document. Boundaries may be  
generalized for this map scale. Private lands within government  
reservations may not be shown. Obtain permission before  
entering private lands.

Imagery.....NAIP, July 2014  
Roads.....U.S. Census Bureau, 2014 - 2015  
Names.....GNIS, 2015  
Hydrography.....National Hydrography Dataset, 2014  
Contours.....National Elevation Dataset, 2005  
Boundaries.....Multiple sources; see metadata file 1972 - 2015  
Public Land Survey System.....BLM, 2015  
Wetlands.....FWS National Wetlands Inventory 1977 - 2014

UTM GRID AND 2015 MAGNETIC NORTH  
DECLINATION AT CENTER OF SHEET

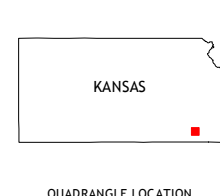
U.S. National Grid  
100,000-m Square ID  
TB  
Grid Zone Designation  
15S

SCALE 1:24 000

1 000 0 1000 2000 3000 4000 5000 6000 7000 8000 9000 10000  
KILOMETERS  
1 000 0 1000 2000 3000 4000 5000 6000 7000 8000 9000 10000  
METERS  
1 000 0 1000 2000 3000 4000 5000 6000 7000 8000 9000 10000  
MILES  
FEET

CONTOUR INTERVAL 10 FEET  
NORTH AMERICAN VERTICAL DATUM OF 1988

This map was produced to conform with the  
National Geospatial Program US Topo Product Standard, 2011.  
A metadata file associated with this product is draft version 0.6.19



QUADRANGLE LOCATION

1	2	3
4	5	6
7	8	9

ADJOINING QUADRANGLES

1 Needlesha  
2 Morehead  
3 Thayer  
4 Sycamore  
5 Dennis  
6 Independence  
7 Liberty  
8 Mound Valley

ROAD CLASSIFICATION

Expressway  
Secondary Hwy  
Ramp  
Interstate Route  
US Route  
Local Connector  
Local Road  
4WD  
State Route

CHERRYVALE, KS  
2016



NSN 7540-01-000-0000  
NSN REF NO. USGS 224 X 8 8 8 3