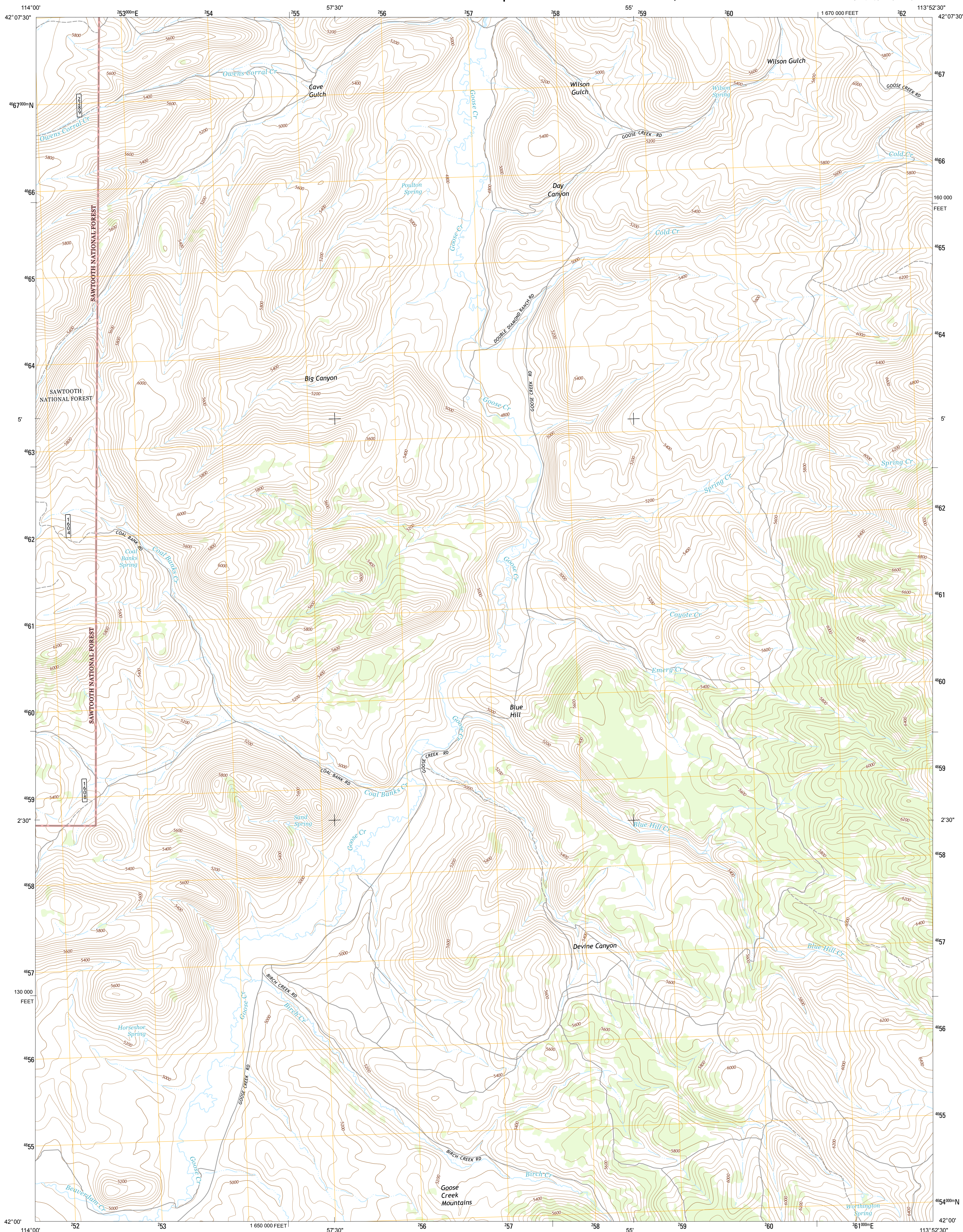




U.S. DEPARTMENT OF THE INTERIOR  
U. S. GEOLOGICAL SURVEY



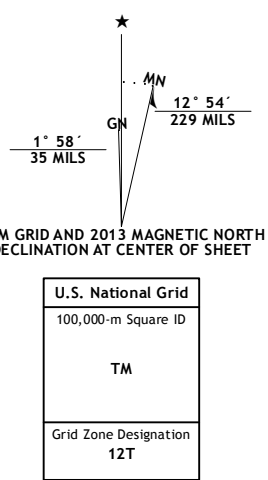
**BLUE HILL QUADRANGLE**  
IDAHO-CASSIA CO.  
7.5-MINUTE SERIES



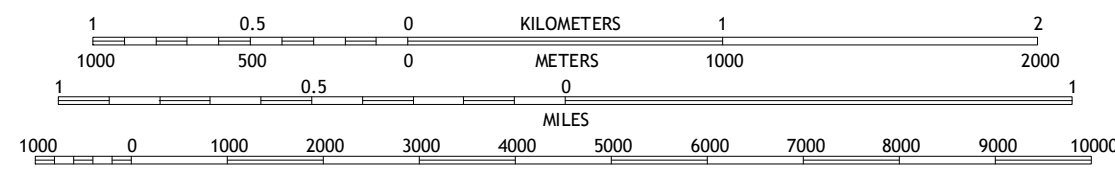
Produced by the United States Geological Survey  
North American Datum of 1983 (NAD83)  
World Geodetic System of 1984 (WGS84). Projection and  
1 000-meter grid: Universal Transverse Mercator, Zone 12T  
10 000-foot ticks: Idaho Coordinate System of 1983 (central  
zone)

This map is not a legal document. Boundaries may be generalized for this map scale. Private lands within government reservations may not be shown. Obtain permission before entering private lands.

Imagery.....	NAIP, July 2011 - August 2011	TomTom
Roads.....	©2006-2013	Data
Roads within US Forest Service Lands.....	FSTopo	2013
	with limited Forest Service updates,	2013
Names.....	GNIS,	2013
Hydrography.....	National Hydrography Dataset,	2011
Contours.....	National Elevation Dataset,	2002
Boundaries.....	Census, IBWC, IBC, USGS, 1972 -	2012
Public Land Survey System.....	BLM,	2011



SCALE 1:24 000



CONTOUR INTERVAL 40 FEET  
NORTH AMERICAN VERTICAL DATUM OF 1988

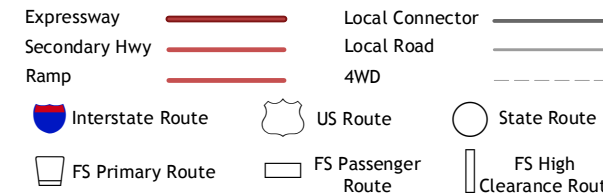
This map was produced to conform with the  
Geospatial Program US Topo Product Standard, 2011.  
A file associated with this product is draft version 0.6.15



Severe Spring	Oakley	Basin
Ibex Peak	Blue Hill	Lyman Pass
Nile Spring	Pole Creek	Cotton Thomas Basin

ADJOINING 7.5' QUADRANGLES

ROAD CLASSIFICATION



Check with local Forest Service unit  
for current travel conditions and restrictions.

BLUE HILL, ID  
2013

