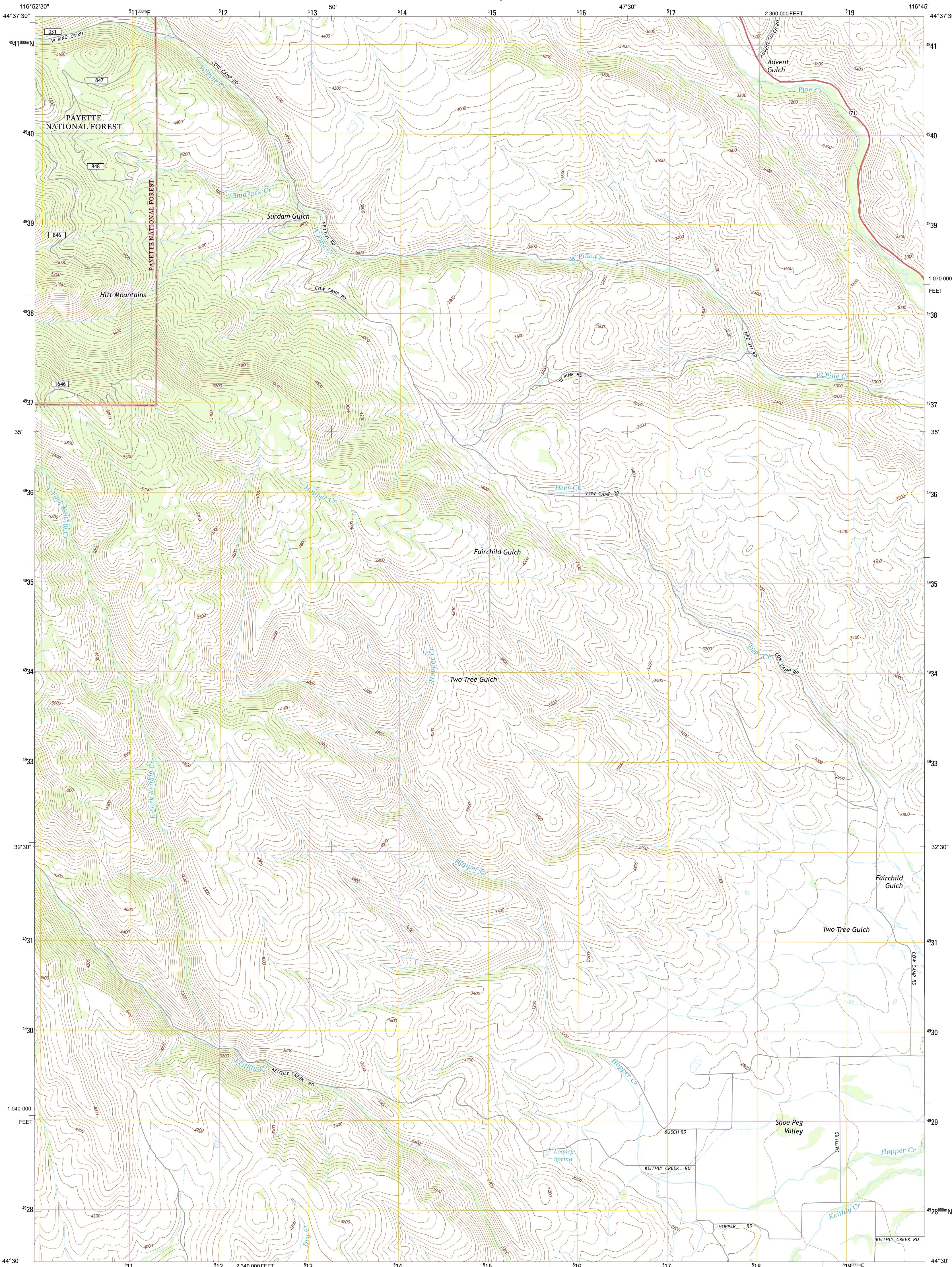




U.S. DEPARTMENT OF THE INTERIOR  
U. S. GEOLOGICAL SURVEY



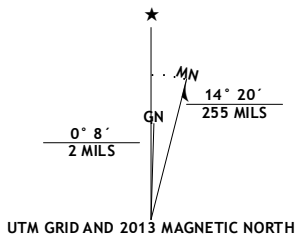
HOPPER CREEK QUADRANGLE  
IDAHO-WASHINGTON CO.  
7.5-MINUTE SERIES



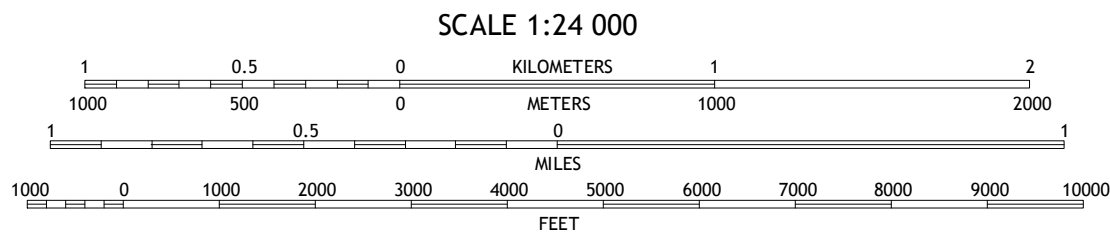
**Produced by the United States Geological Survey**  
North American Datum of 1983 (NAD83)  
World Geodetic System of 1984 (WGS84). Projection and  
1 000-meter grid: Universal Transverse Mercator, Zone 11T  
10 000-foot ticks: Idaho Coordinate System of 1983 (west zone)

This map is not a legal document. Boundaries may be  
generalized for this map scale. Private lands within government  
reservations may not be shown. Obtain permission before  
entering private lands.

Imagery.....NAIP, August 2011  
Roads.....©2006-2011 TomTom  
Roads within US Forest Service Lands.....FS Topo Data  
with limited Forest Service updates, 2013  
Names.....GNIS, 2013  
Hydrography.....National Hydrography Dataset, 2011  
Contours.....National Elevation Dataset, 1999  
Boundaries.....IBWC, IBC, USGS, 1972-2012  
Public Land Survey System.....BLM, 2011



U.S. National Grid  
100,000-m Square ID  
NK  
Grid Zone Designation  
11T



CONTOUR INTERVAL 40 FEET  
NORTH AMERICAN VERTICAL DATUM OF 1988  
This map was produced to conform with the  
National Geospatial Program US Topo Product Standard, 2011.  
A metadata file associated with this product is draft version 0.6.15



Neil Gulch	Advent Gulch	Rush Peak
Sturgill Peak	Hopper Creek	Cambridge
Mann Creek NW	Midvale Hill	Midvale

ROAD CLASSIFICATION			
Expressway	Local Connector	Local Road	
Secondary Hwy	4WD		
Ramp			
Interstate Route	US Route	State Route	
FS Primary Route	FS Passenger Route	FS High Clearance Route	

Check with local Forest Service unit  
for current travel conditions and restrictions.

HOPPER CREEK, ID  
2013

