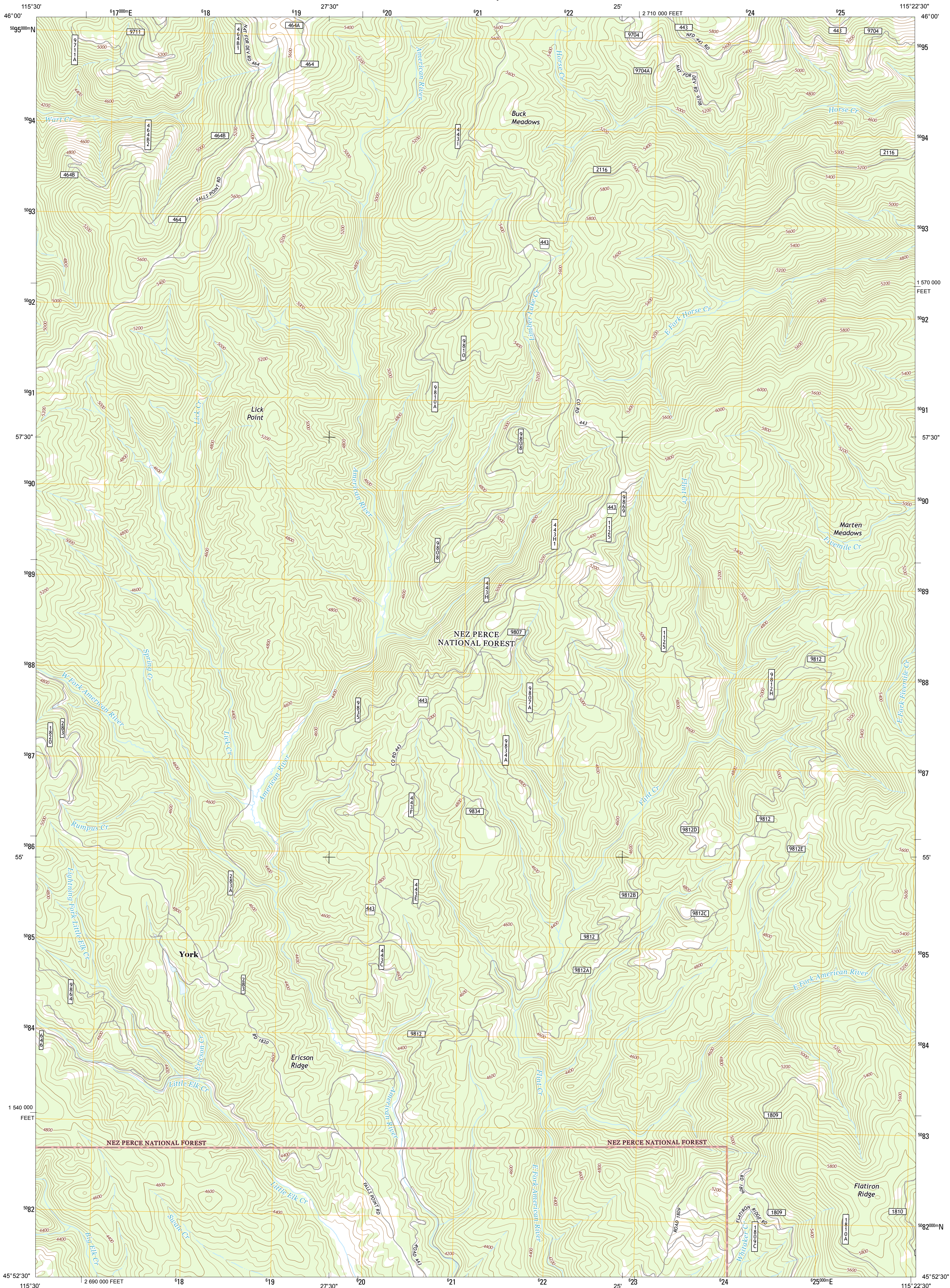




U.S. DEPARTMENT OF THE INTERIOR  
U. S. GEOLOGICAL SURVEY



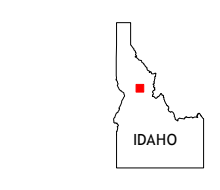
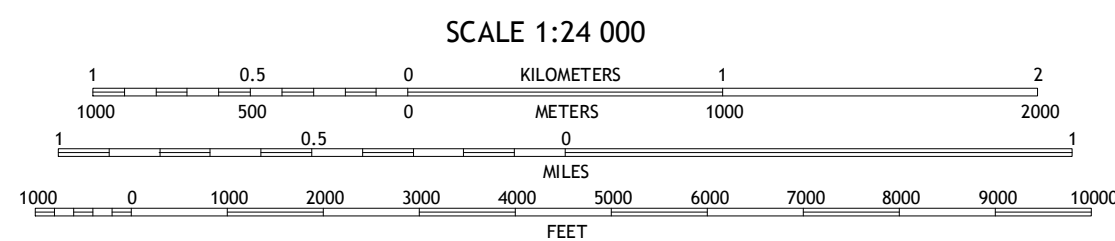
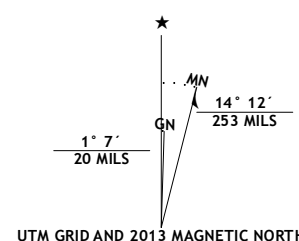
LICK POINT QUADRANGLE  
IDAHO-IDAHO CO.  
7.5-MINUTE SERIES



Produced by the United States Geological Survey  
North American Datum of 1983 (NAD83)  
World Geodetic System of 1984 (WGS84). Projection and  
1 000-meter grid: Universal Transverse Mercator, Zone 11T  
10 000-foot ticks: Idaho Coordinate System of 1983 (west zone)

This map is not a legal document. Boundaries may be  
generalized for this map scale. Private lands within government  
reservations may not be shown. Obtain permission before  
entering private lands.

Imagery.....NAP, August 2011  
Roads.....©2006-2013 TomTom  
Roads within US Forest Service Lands.....FS Topo Data  
with limited Forest Service updates, 2013  
Names.....GNIS, 2013  
Hydrography.....National Hydrography Dataset, 2011  
Contours.....National Elevation Dataset, 2000  
Boundaries.....IBWC, IBC, USGS, 1972 - 2012  
Public Land Survey System.....BLM, 2011



Goddard Point	Stillman Point	Selway Falls
Iron Mountain	Lick Point	Anderson Butte
Center Star Mountain	Elk City	Black Hawk Mountain

ROAD CLASSIFICATION

Expressway	Local Connector
Secondary Hwy	Local Road
Ramp	4WD

Interstate Route US Route State Route  
FS Primary Route FS Passenger Route FS High Clearance Route

Check with local Forest Service unit  
for current travel conditions and restrictions.

LICK POINT, ID  
2013

