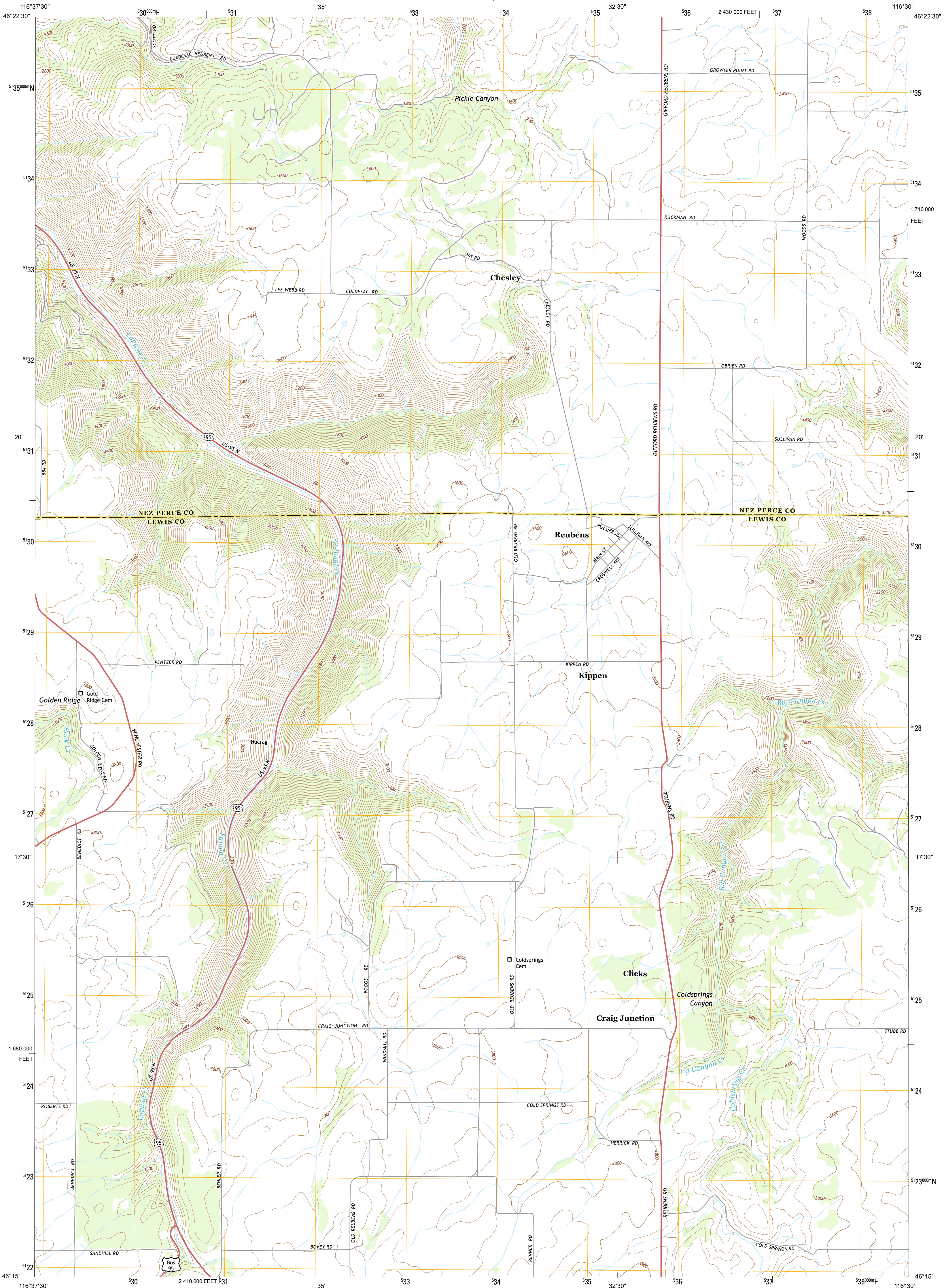




U.S. DEPARTMENT OF THE INTERIOR
U. S. GEOLOGICAL SURVEY



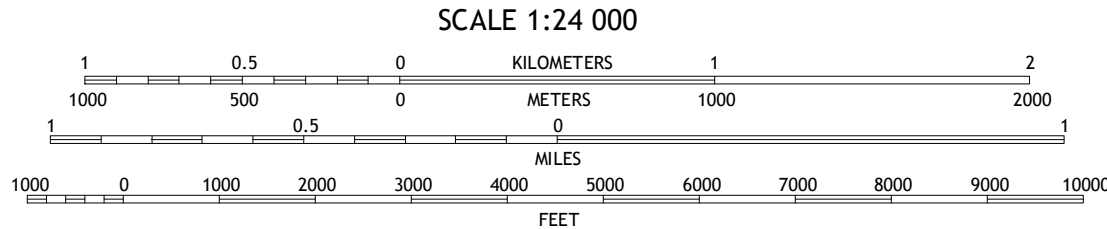
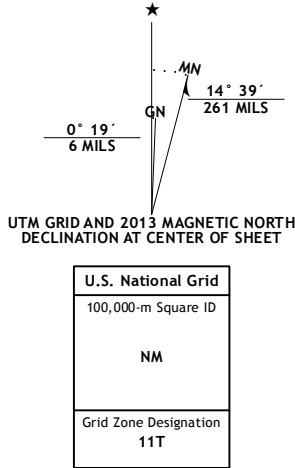
REUBENS QUADRANGLE
IDAHO
7.5-MINUTE SERIES



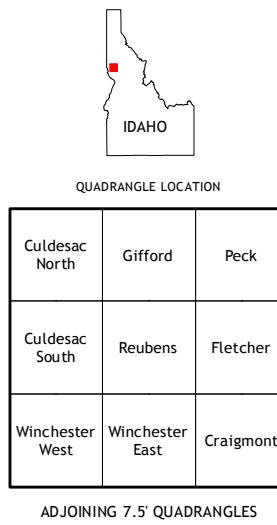
Produced by the United States Geological Survey
North American Datum of 1983 (NAD83)
World Geodetic System of 1984 (WGS84). Projection and
1 000-meter grid: Universal Transverse Mercator, Zone 11T
10 000-foot ticks: Idaho Coordinate System of 1983 (west zone)

This map is not a legal document. Boundaries may be
generalized for this map scale. Private lands within government
reservations may not be shown. Obtain permission before
entering private lands.

Imagery.....NAIP, July 2011
Roads.....©2006-2013 TomTom
Names.....GNIS, 2013
Hydrography.....National Hydrography Dataset, 2011
Contours.....National Elevation Dataset, 1999
Boundaries.....Census, IBWC, IBC, USGS, 1972 - 2012
Public Land Survey System.....BLM, 2011



CONTOUR INTERVAL 40 FEET
NORTH AMERICAN VERTICAL DATUM OF 1988
This map was produced to conform with the
National Geospatial Program US Topo Product Standard, 2011.
A metadata file associated with this product is draft version 0.6.15



ROAD CLASSIFICATION		
Expressway	Local Connector	
Secondary Hwy	Local Road	
Ramp	4WD	
Interstate Route	US Route	State Route

REUBENS, ID
2013

