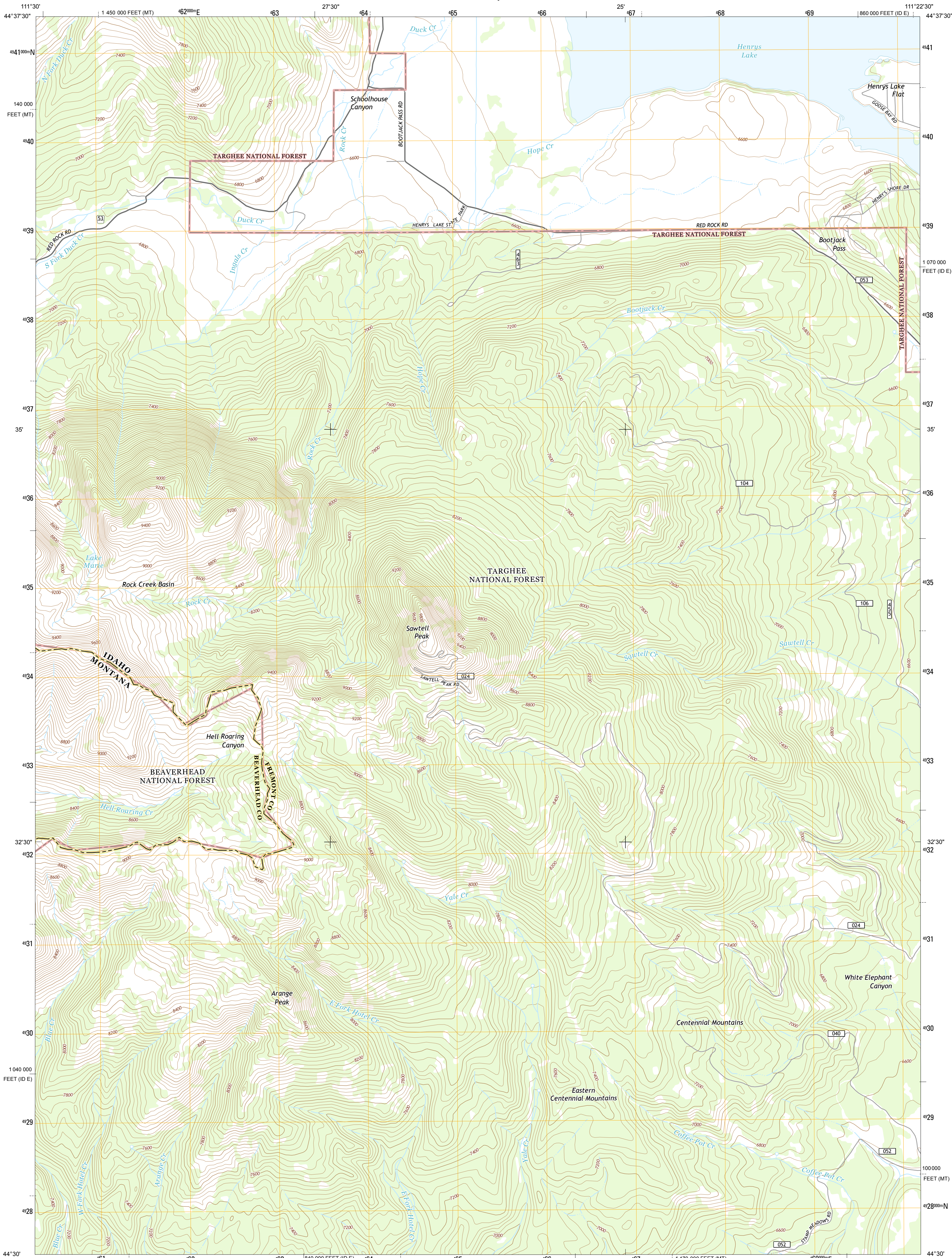




U.S. DEPARTMENT OF THE INTERIOR
U. S. GEOLOGICAL SURVEY



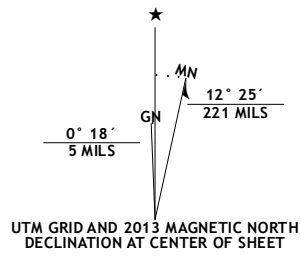
SAWTELL PEAK QUADRANGLE
IDAHO-MONTANA
7.5-MINUTE SERIES



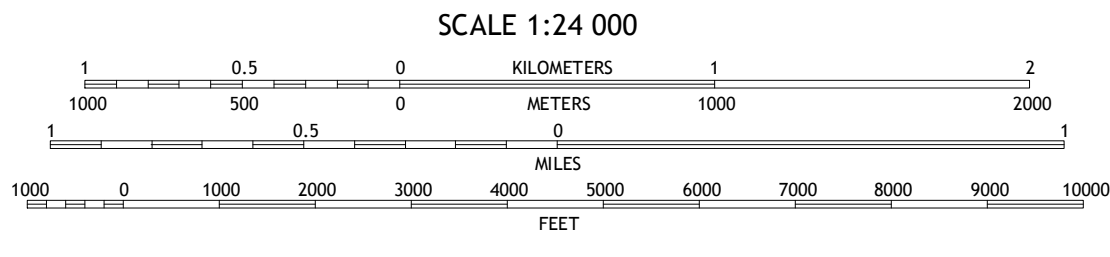
Produced by the United States Geological Survey
North American Datum of 1983 (NAD83)
World Geodetic System of 1984 (WGS84). Projection and
1 000-meter grid: Universal Transverse Mercator, Zone 12T
10 000-foot ticks: Idaho Coordinate System of 1983 (east zone),
Montana Coordinate System of 1983

This map is not a legal document. Boundaries may be
generalized for this map scale. Private lands within government
reservations may not be shown. Obtain permission before
entering private lands.

Imagery.....NAIP, August 2011
Roads.....TomTom
Roads within US Forest Service Lands.....FS Topo Data
with limited Forest Service updates, 2013
Names.....GNIS, 2013
Hydrography.....National Hydrography Dataset, 2011
Contours.....National Elevation Dataset, 2001
Boundaries.....IBWC, IBC, USGS, 1972-2012
Public Land Survey System.....BLM, 2011



U.S. National Grid
100,000-m Square ID
VQ
Grid Zone Designation
12T



CONTOUR INTERVAL 40 FEET
NORTH AMERICAN VERTICAL DATUM OF 1988
This map was produced to conform with the
National Geospatial Program US Topo Product Standards, 2011.
A metadata file associated with this product is draft version 0.6.15



Hidden Lake Bench	Targhee Peak	Targhee Pass
Mount Jefferson	Sawtell Peak	Big Springs
Icehouse Creek	Island Park Dam	Island Park

ROAD CLASSIFICATION
Expressway
Secondary Hwy
Ramp
Interstate Route
FS Primary Route
Local Connector
Local Road
4WD
US Route
FS Passenger Route
State Route
FS High Clearance Route
Check with local Forest Service unit
for current travel conditions and restrictions.

SAWTELL PEAK, ID-MT
2013

