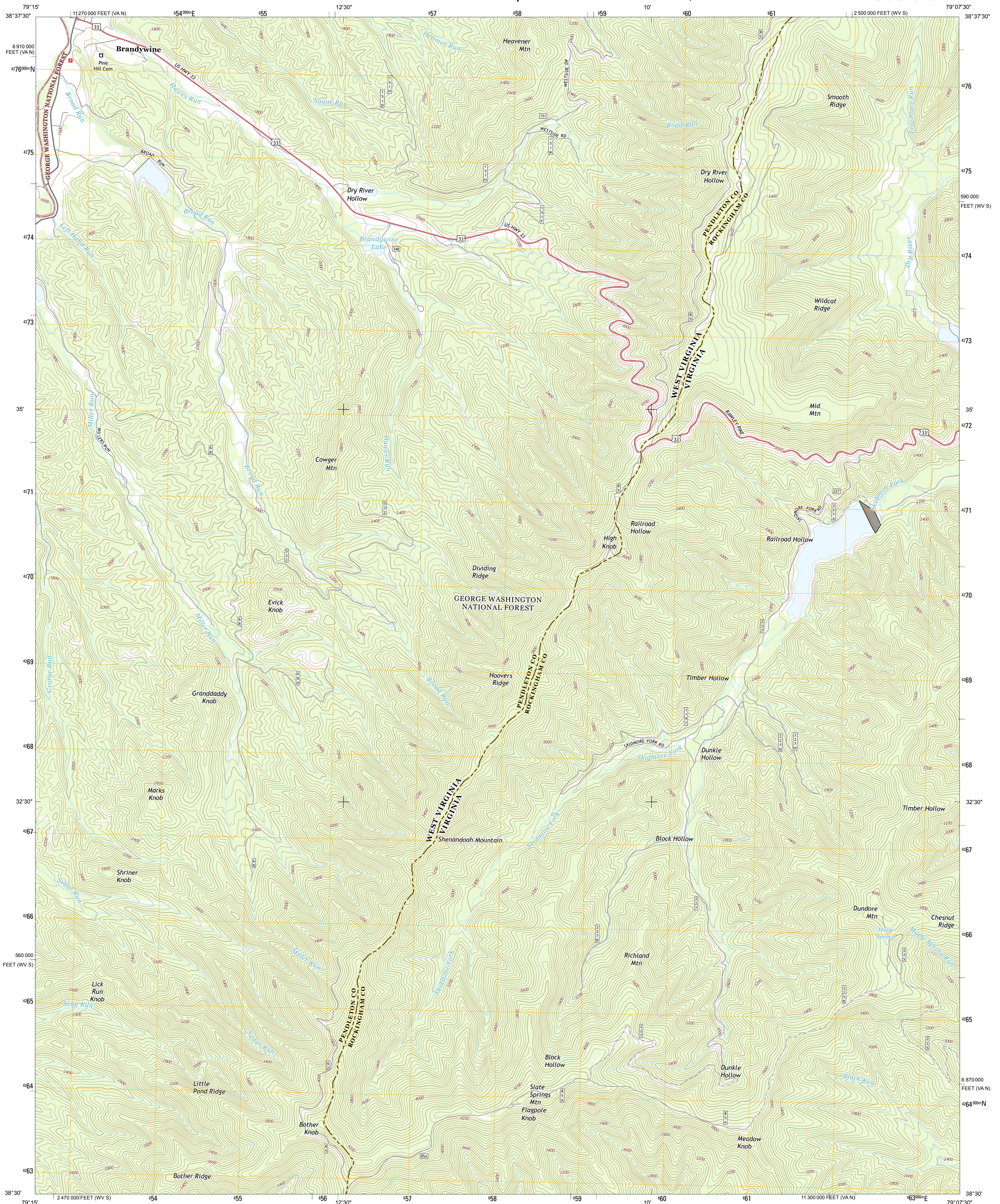




U.S. DEPARTMENT OF THE INTERIOR  
U.S. GEOLOGICAL SURVEY



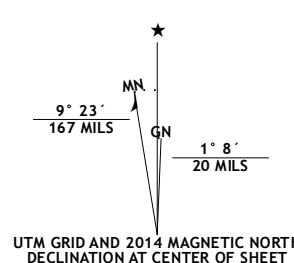
**BRANDYWINE QUADRANGLE**  
**WEST VIRGINIA-VIRGINIA**  
**7.5-MINUTE SERIES**



Produced by the United States Geological Survey  
North American Datum of 1983 (NAD83)  
World Geodetic System of 1984 (WGS84). Projection and  
1 000-meter grid: Universal Transverse Mercator, Zone 17S  
10 000-foot ticks: West Virginia Coordinate System of 1983  
(south zone), Virginia Coordinate System of 1983 (north zone)

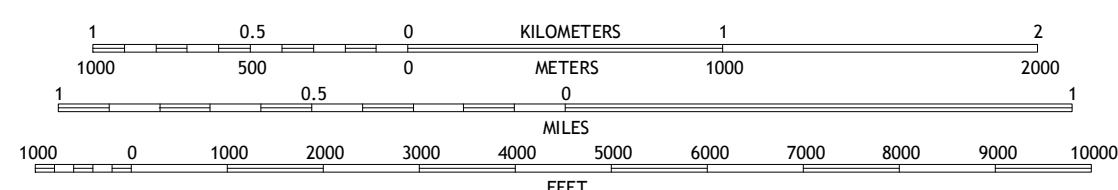
This map is not a legal document. Boundaries may be generalized for this map scale. Private lands within government reservations may not be shown. Obtain permission before entering private lands.

Imagery.....	NAIP,	October	2011
Roads.....		HERE,	©2013
Roads within US Forest Service Lands.....	FSTopo	Data	
	with limited Forest Service updates,	2013	
Names.....		GNIS,	2013
Hydrography.....	National Hydrography	Dataset,	2011
Contours.....	National Elevation	Dataset,	2013
Boundaries.....	Multiple sources; see metadata file	1972 -	2006



U.S. National Grid
100,000-m Square ID
PC
Grid Zone Designation
17S

SCALE 1:24 000



CONTOUR INTERVAL 40 FEET  
NORTH AMERICAN VERTICAL DATUM OF 1988

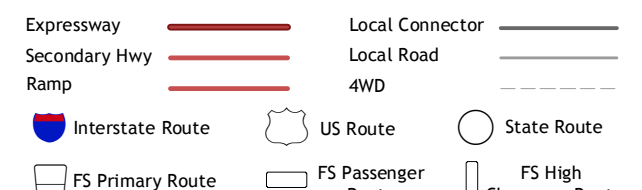
This map was produced to conform with the  
National Geospatial Program US Topo Product Standard, 2011.  
Data file associated with this product is draft version 0.6.16



1	2	3
4		5
6	7	8

- 1 Franklin
- 2 Fort Seybert
- 3 Cow Knob
- 4 Sugar Grove
- 5 Rawley Springs
- 6 Palo Alto
- 7 Reddish Knob
- 8 Briery Branch

## ROAD CLASSIFICATION



Check with local Forest Service unit  
for current travel conditions and restrictions.

BRANDYWINE, WV-VA  
2014