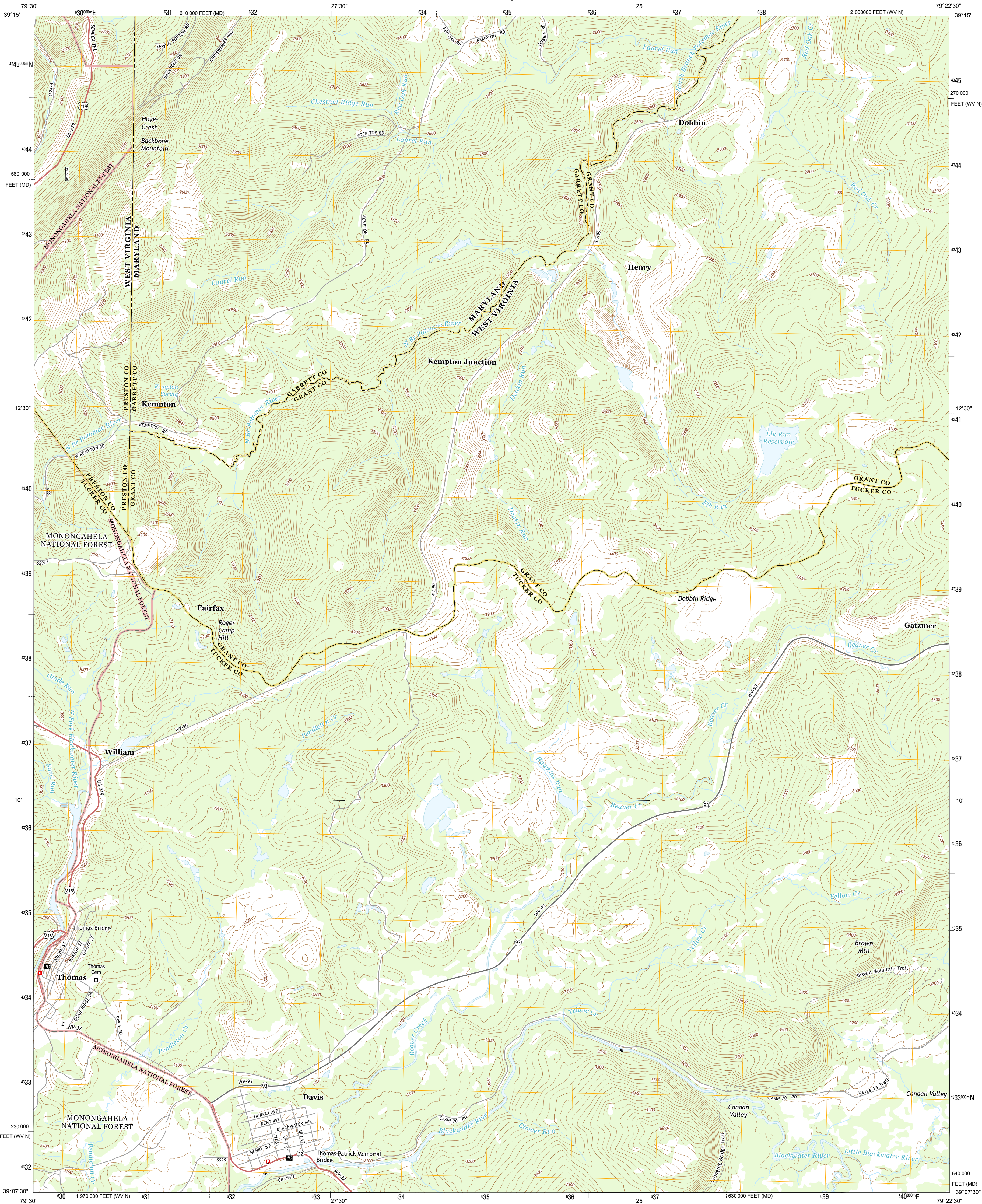




U.S. DEPARTMENT OF THE INTERIOR
U.S. GEOLOGICAL SURVEY



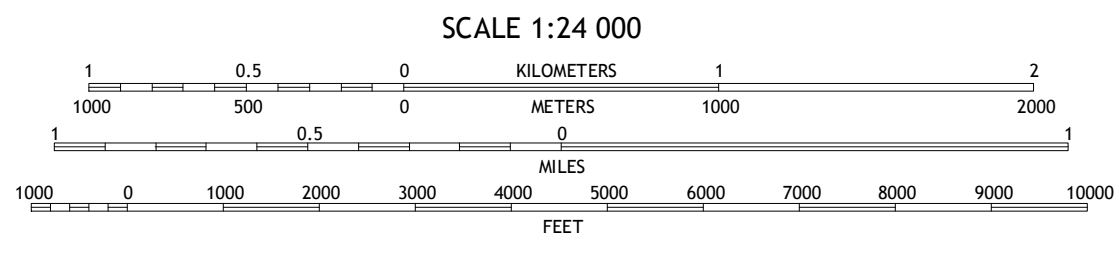
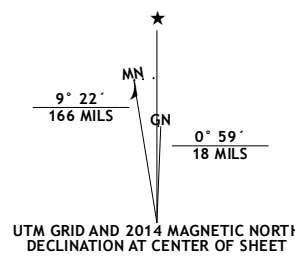
DAVIS QUADRANGLE
WEST VIRGINIA-MARYLAND
7.5-MINUTE SERIES



Produced by the United States Geological Survey
North American Datum of 1983 (NAD83)
World Geodetic System of 1984 (WGS84)
1 000-meter grid: Universal Transverse Mercator, Zone 17S
10 000-foot ticks: West Virginia Coordinate System of 1983 (north zone), Maryland Coordinate System of 1983

This map is not a legal document. Boundaries may be generalized for this map scale. Private lands within government reservations may not be shown. Obtain permission before entering private lands.

Imagery.....NAIP, October 2011
Roads.....HERE, ©2013
Roads within US Forest Service Lands.....FS Topo Data with limited Forest Service updates, 2013
Names.....USGS, ©2013
Hydrography.....National Hydrography Dataset, 2011
Contours.....National Elevation Dataset, 2006
Boundaries.....Multiple sources; see metadata file 1972 - 2013



CONTOUR INTERVAL 20 FEET
NORTH AMERICAN VERTICAL DATUM OF 1988
This map was produced to conform with the National Geospatial Program US Topo Product Standard, 2011. A metadata file associated with this product is draft version 0.6.16



ROAD CLASSIFICATION
Expressway
Secondary Hwy
Ramp
Interstate Route
FS Primary Route
Local Connector
Local Road
4WD
US Route
FS Passenger Route
State Route
FS High Clearance Route

Check with local Forest Service unit for current travel conditions and restrictions.

DAVIS, WV-MD
2014

1	2	3
4	5	6
7	8	9

ADJOINING QUADRANGLES

- 1 Aurora
- 2 Table Rock
- 3 Gorman
- 4 Lead Mine
- 5 Mount Storm Lake
- 6 Mozzak Mountain
- 7 Blackwater Falls
- 8 Blackbird Knob

