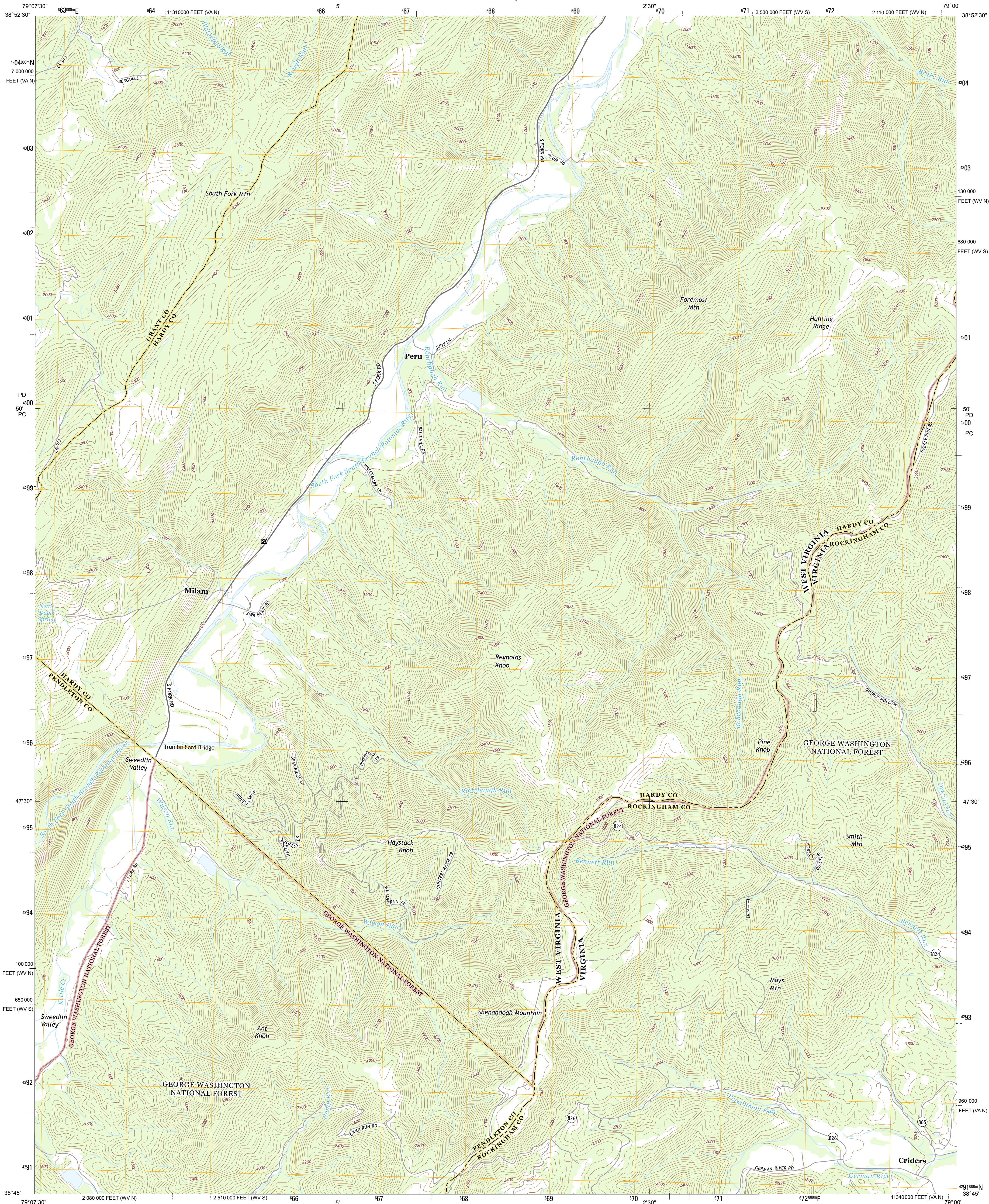




U.S. DEPARTMENT OF THE INTERIOR
U.S. GEOLOGICAL SURVEY



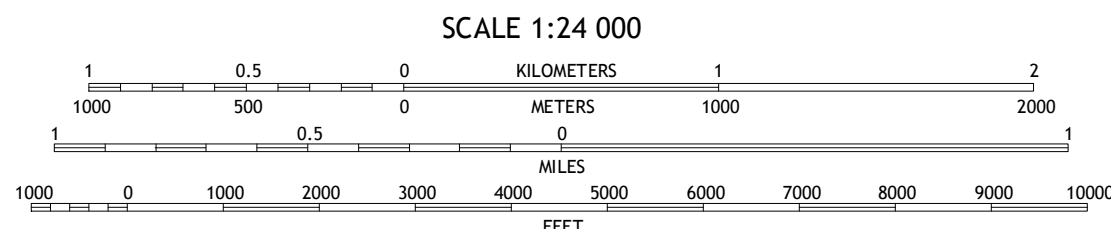
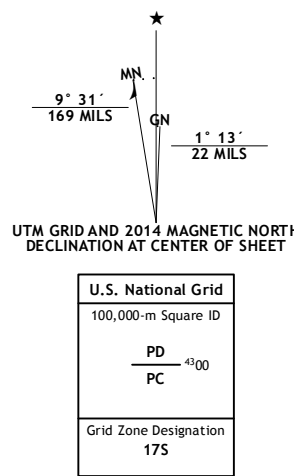
MILAM QUADRANGLE
WEST VIRGINIA-VIRGINIA
7.5-MINUTE SERIES



Produced by the United States Geological Survey
North American Datum of 1983 (NAD83)
World Geodetic System of 1984 (WGS84). Projection and
1 000-meter grid: Universal Transverse Mercator, Zone 17S
10 000-foot ticks: West Virginia Coordinate System of 1983
(north and south zones), Virginia Coordinate System of 1983
(north zone)

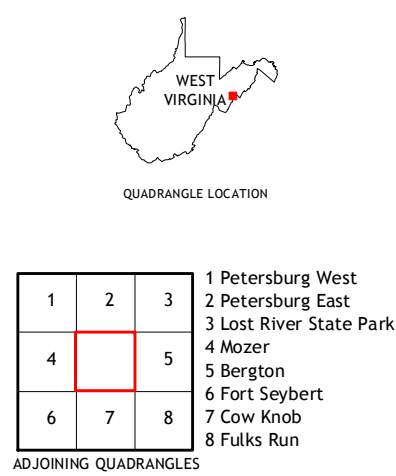
This map is not a legal document. Boundaries may be
generalized for this map scale. Private lands within government
reservations may not be shown. Obtain permission before

Imagery.....NAIP, October 2011
Roads.....HERE, ©2013
Roads within US Forest Service Lands.....FS Topo Data
with limited Forest Service updates, 2013
Names.....GNIS, 2013
Hydrography.....National Hydrography Dataset, 2011
Contours.....National Elevation Dataset, 2006
Boundaries.....Multiple sources; see metadata file 1972 - 2013



CONTOUR INTERVAL 40 FEET
NORTH AMERICAN VERTICAL DATUM OF 1988

This map was produced to conform with the
National Geospatial Program US Topo Product Standard, 2011.
A metadata file associated with this product is draft version 0.6.16



ROAD CLASSIFICATION
Expressway
Secondary Hwy
Ramp
Interstate Route
FS Primary Route
Local Connector
Local Road
4WD
US Route
FS Passenger Route
State Route
Clearance Route

Check with local Forest Service unit
for current travel conditions and restrictions.

MILAM, WV-VA
2014

