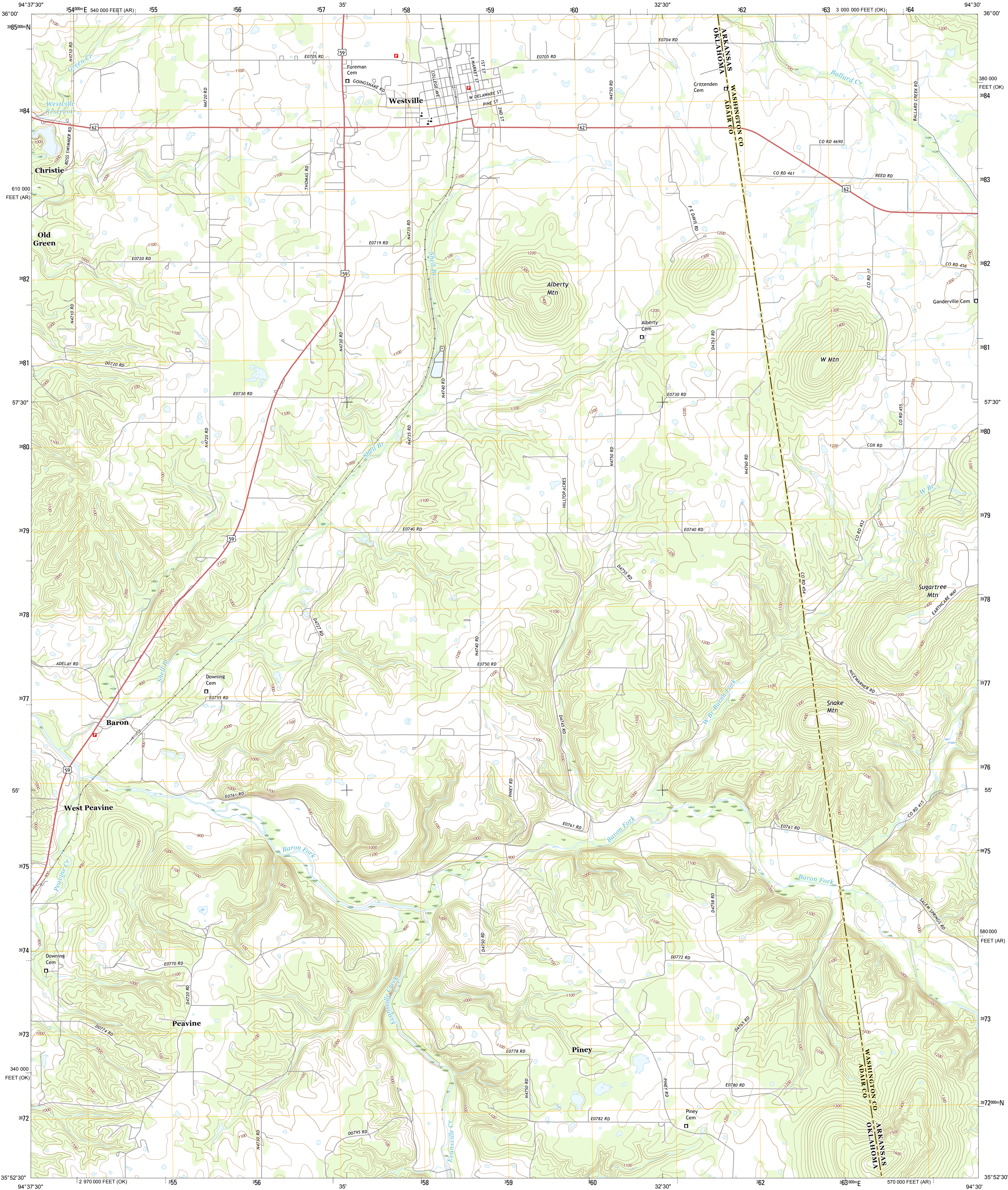




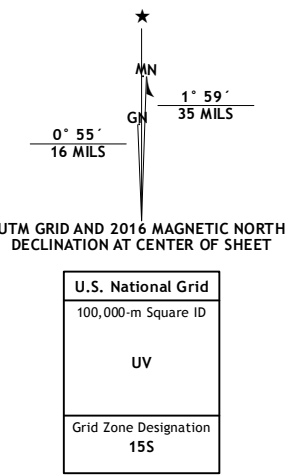
U.S. DEPARTMENT OF THE INTERIOR  
U.S. GEOLOGICAL SURVEY



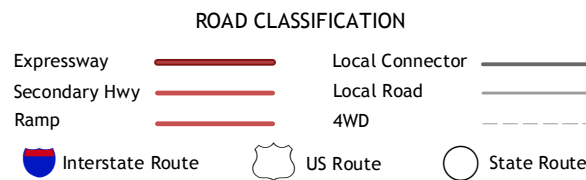
WESTVILLE QUADRANGLE  
OKLAHOMA-ARKANSAS  
7.5-MINUTE SERIES



Produced by the United States Geological Survey  
North American Datum of 1983 (NAD83)  
World Geodetic System of 1984 (WGS84). Projection and  
1 000-meter grid: Universal Transverse Mercator, Zone 15S  
10 000-foot ticks: Oklahoma Coordinate System of 1983 (north  
zone), Arkansas Coordinate System of 1983 (north zone)  
This map is not a legal document. Boundaries may be  
generalized for this map scale. Private lands within government  
reservations may not be shown. Obtain permission before  
entering private lands.  
Imagery.....N.A.P. August 2013  
Roads.....U.S. Census Bureau 2014 - 2015  
Names.....GNIS 2015  
Hydrography.....National Hydrography Dataset, 2013  
Contours.....National Elevation Dataset, 2007  
Boundaries.....Multiple sources; see metadata file 1972 - 2015  
Public Land Survey System.....BLM, 2011  
Wetlands.....FWS National Wetlands Inventory 1977 - 2014



CONTOUR INTERVAL 20 FEET  
NORTH AMERICAN VERTICAL DATUM OF 1988  
This map was produced to conform with the  
National Geospatial Program US Topo Product Standard, 2011.  
A metadata file associated with this product is draft version 0.6.19



|   |   |   |
|---|---|---|
| 1 | 2 | 3 |
| 4 | 5 | 6 |
| 7 | 8 | 9 |

ADJOINING QUADRANGLES

WESTVILLE, OK-AR  
2016

