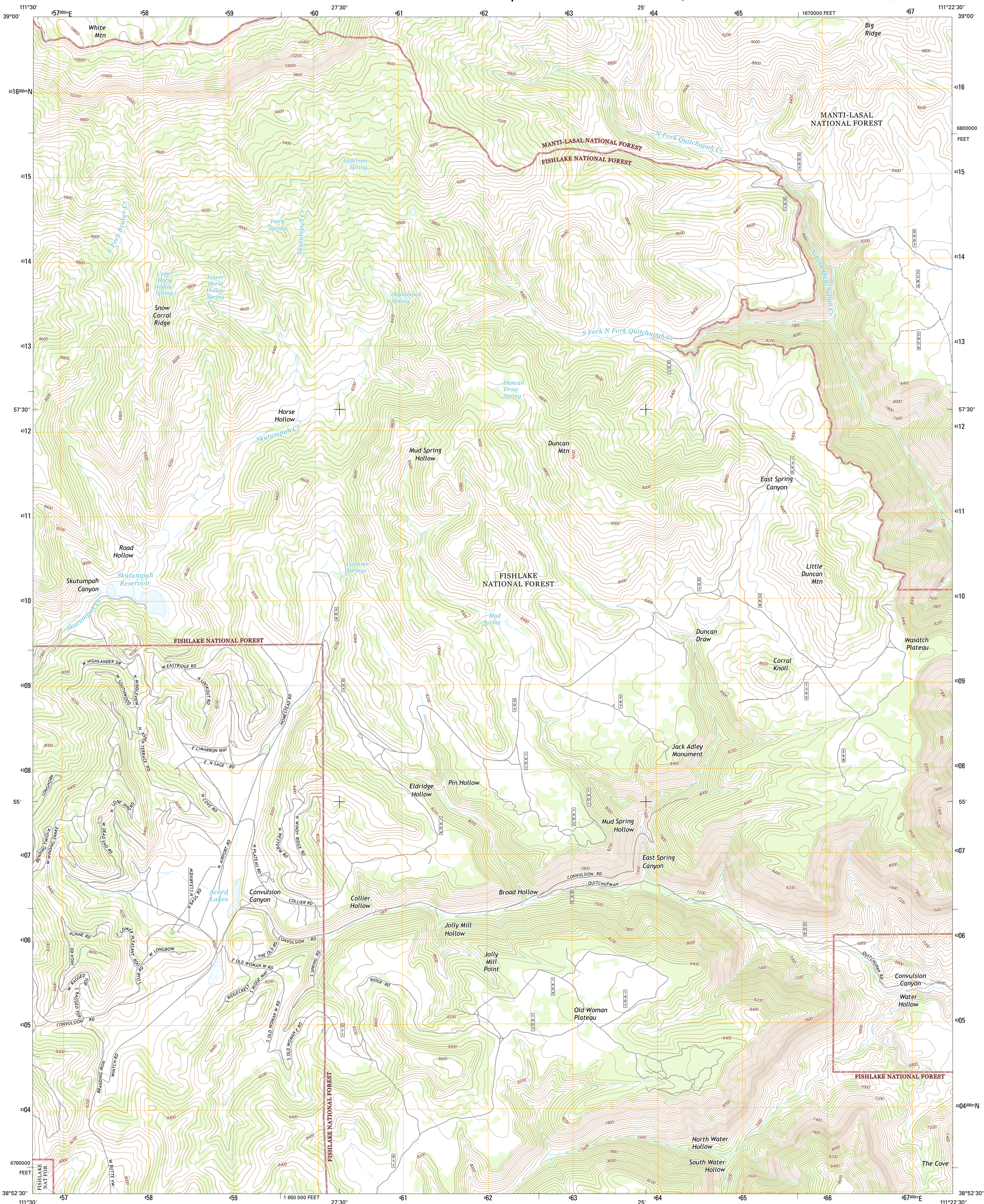




U.S. DEPARTMENT OF THE INTERIOR
U.S. GEOLOGICAL SURVEY



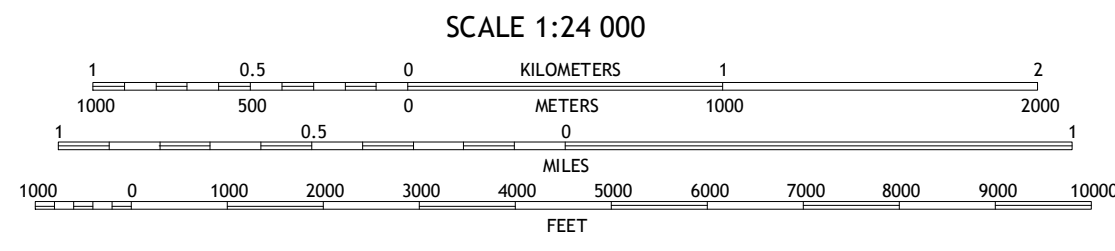
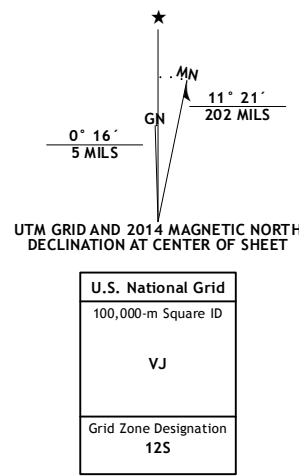
ACORD LAKES QUADRANGLE
UTAH-SEVIER CO.
7.5-MINUTE SERIES



Produced by the United States Geological Survey
North American Datum of 1983 (NAD83)
World Geodetic System of 1984 (WGS84) Projection and
1 000-meter grid: Universal Transverse Mercator, Zone 12S
10 000-foot ticks: Utah Coordinate System of 1983 (central zone)

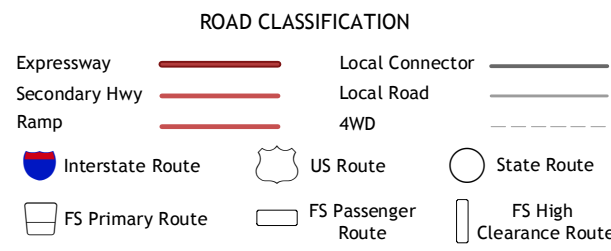
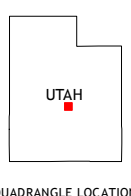
This map is not a legal document. Boundaries may be
generalized for this map scale. Private lands within government
reservations may not be shown. Obtain permission before
entering private lands.

Images:.....NAIP, June 2011 - August 2011
Roads:.....HERE, ©2013
Roads within US Forest Service Lands:.....FS Topo Data
with limited Forest Service updates, 2013
Names:.....GNIS, 2013
Hydrography:.....National Hydrography Dataset, 2011
Contours:.....National Elevation Dataset, 2000
Boundaries:.....Multiple sources; see metadata file 1972-2013
Public Land Survey System:.....BLM, 2011



CONTOUR INTERVAL 40 FEET
NORTH AMERICAN VERTICAL DATUM OF 1988

This map was produced to conform with the
National Geospatial Program US Topo Product Standard, 2011.
A metadata file associated with this product is draft version 0.6.16



1	2	3
4	5	6
7	8	9

1 Woods Lake
2 Helliotrope Mountain
3 Flagstaff Peak
4 Water Hollow Ridge
5 Emery West
6 Yogo Creek
7 Old Woman Plateau
8 Walker Flat

Check with local Forest Service unit
for current travel conditions and restrictions.

ACORD LAKES, UT
2014

