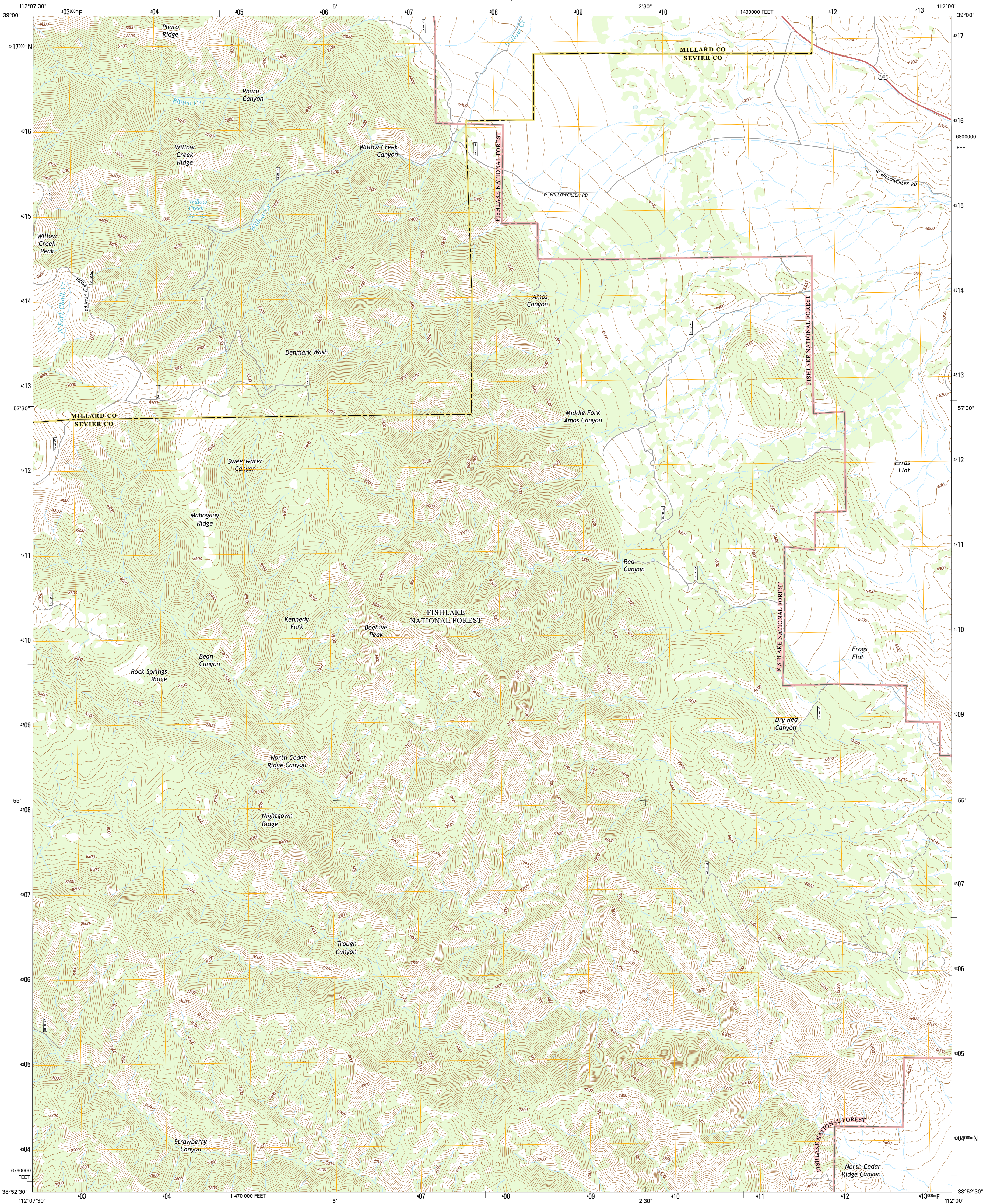




U.S. DEPARTMENT OF THE INTERIOR
U.S. GEOLOGICAL SURVEY



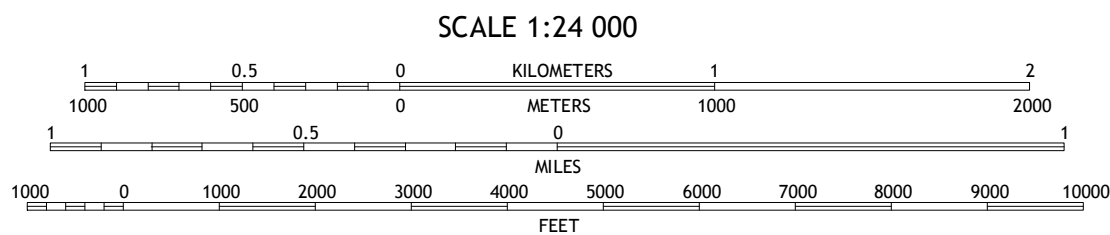
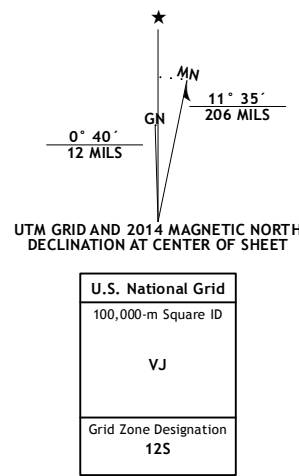
BEEHIVE PEAK QUADRANGLE
UTAH
7.5-MINUTE SERIES



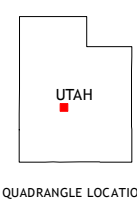
Produced by the United States Geological Survey
North American Datum of 1983 (NAD83)
World Geodetic System of 1984 (WGS84) Projection and
1 000-meter grid: Universal Transverse Mercator, Zone 12S
10 000-foot ticks: Utah Coordinate System of 1983 (central zone)

This map is not a legal document. Boundaries may be
generalized for this map scale. Private lands within government
reservations may not be shown. Obtain permission before
entering private lands.

Imagery.....NAIP, June 2011 - August 2011
Roads.....HERE, ©2013
Roads within US Forest Service Lands.....FS Topo Data
with limited Forest Service updates, 2013
Names.....GNIS, 2013
Hydrography.....National Hydrography Dataset, 2011
Contours.....National Elevation Dataset, 2000
Boundaries.....Multiple sources; see metadata file 1972-2013
Public Land Survey System.....BLM, 2011



This map was produced to conform with the
National Geospatial Program US Topo Product Standard, 2011.
A metadata file associated with this product is draft version 0.6.16



ROAD CLASSIFICATION			
Expressway	Local Connector	US Route	State Route
Secondary Hwy	Local Road	FS Passenger Route	FS High Clearance Route
Ramp	4WD		
Interstate Route			
FS Primary Route			

Check with local Forest Service unit
for current travel conditions and restrictions.

1	2	3
4	5	6
7	8	9

1 Coffee Peak
2 Scripio Lake
3 Richmond Canyon
4 Mount Catherine
5 Aurora
6 White Pine Peak
7 Richfield
8 Sigurd

BEEHIVE PEAK, UT
2014

