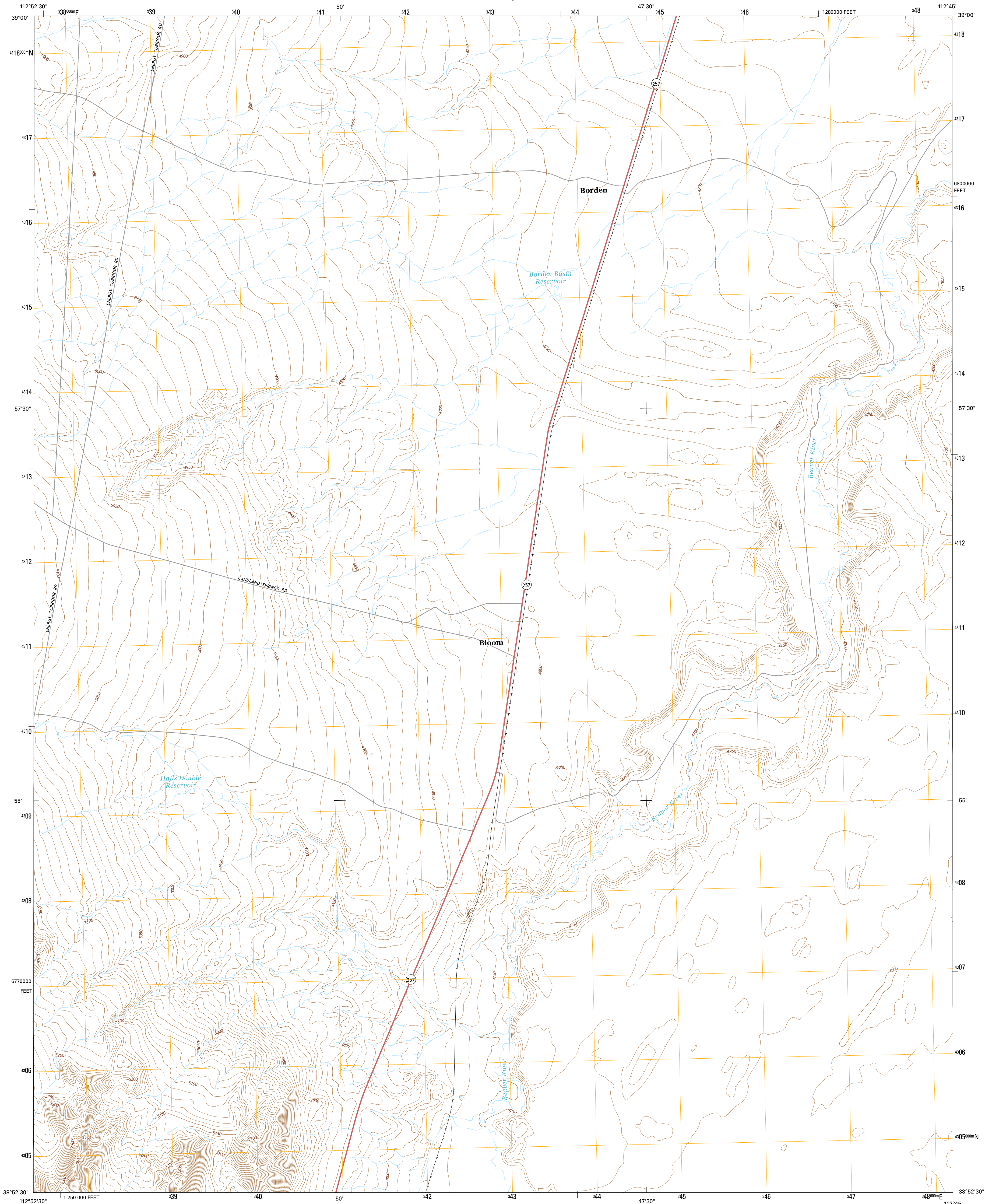




U.S. DEPARTMENT OF THE INTERIOR
U.S. GEOLOGICAL SURVEY



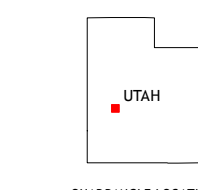
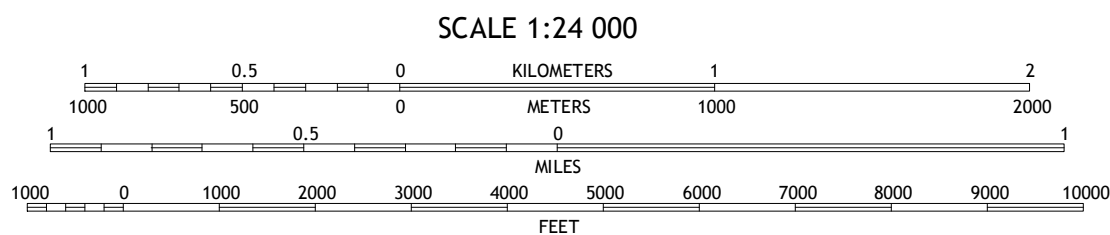
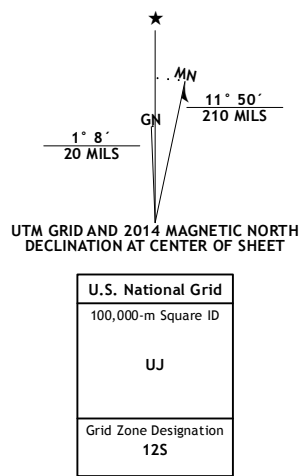
BORDEN QUADRANGLE
UTAH-MILLARD CO.
7.5-MINUTE SERIES



Produced by the United States Geological Survey
North American Datum of 1983 (NAD83). Projection and
World Geodetic System of 1984 (WGS84). Projection and
1 000-meter grid: Universal Transverse Mercator, Zone 12S
10 000-foot ticks: Utah Coordinate System of 1983 (central
zone)

This map is not a legal document. Boundaries may be
generalized for this map scale. Private lands within government
reservations may not be shown. Obtain permission before
entering private lands.

Imagery.....NAIP, June 2011
Roads.....HERE, ©2013
Names.....GNIS, 2013
Hydrography.....National Hydrography Dataset, 2011
Contours.....National Elevation Dataset, 2000
Boundaries.....Multiple sources; see metadata file 1972-2013
Public Land Survey System.....BLM, 2011



ROAD CLASSIFICATION			
Expressway	Local Connector	Local Road	4WD
Secondary Hwy	Local Road	4WD	
Ramp	Interstate Route	US Route	State Route

1	2	3
4	5	6
7	8	9

ADJOINING QUADRANGLES

1 Red Pass
2 Neets
3 Clear Lake
4 Candland Spring
5 Sand Ridge
6 Cat Canyon
7 Cruz
8 Black Point

BORDEN, UT
2014

