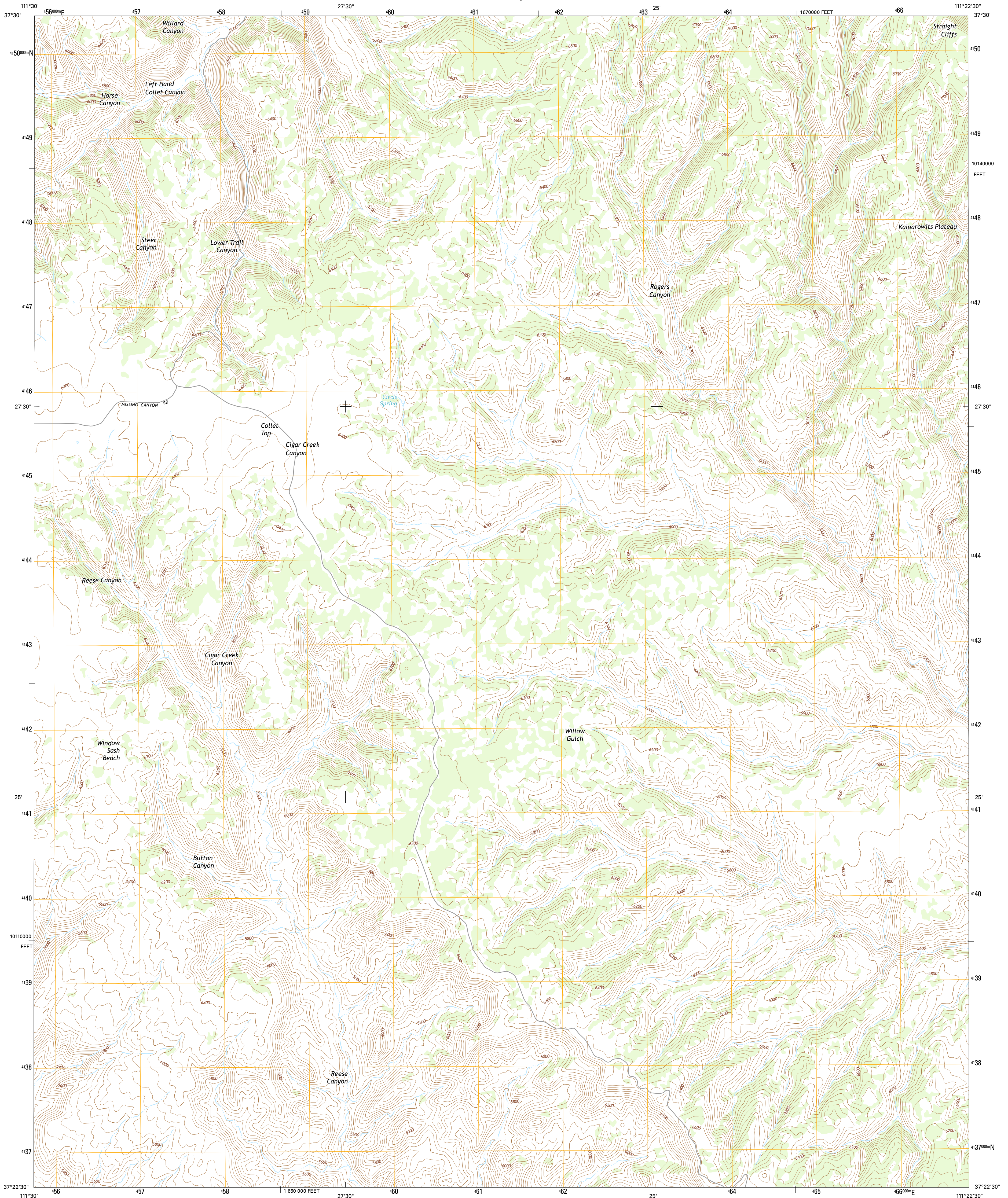




U.S. DEPARTMENT OF THE INTERIOR
U.S. GEOLOGICAL SURVEY



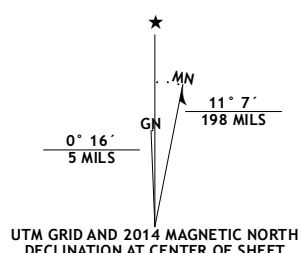
COLLET TOP QUADRANGLE
UTAH-KANE CO.
7.5-MINUTE SERIES



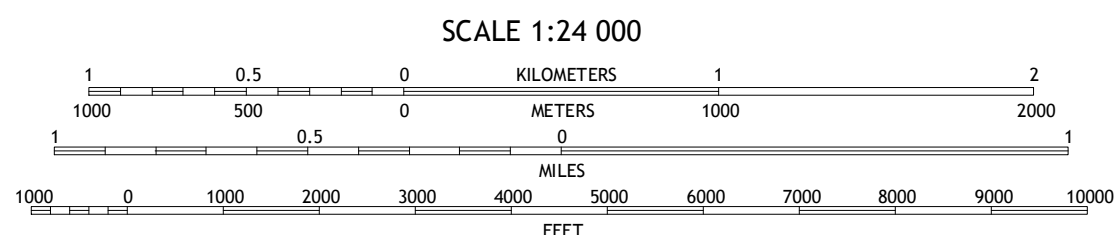
Produced by the United States Geological Survey
North American Datum of 1983 (NAD83)
World Geodetic System of 1984 (WGS84). Projection and
1 000-meter grid: Universal Transverse Mercator, Zone 12S
10 000-foot ticks: Utah Coordinate System of 1983 (south zone)

This map is not a legal document. Boundaries may be
generalized for this map scale. Private lands within government
reservations may not be shown. Obtain permission before
entering private lands.

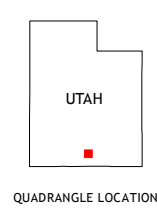
Imagery.....NAIP, June 2011
Roads.....HERE, ©2013
Names.....National Hydrography Dataset, 2013
Hydrography.....National Elevation Dataset, 1999
Contours.....Multiple sources; see metadata file 1972 - 2013
Public Land Survey System.....BLM, 2011



U.S. National Grid
100,000-m Square ID
VG
Grid Zone Designation
12S



CONTOUR INTERVAL 40 FEET
NORTH AMERICAN VERTICAL DATUM OF 1988
This map was produced to conform with the
National Geospatial Program US Topo Product Standard, 2011.
A metadata file associated with this product is draft version 0.6.16



ROAD CLASSIFICATION			
Expressway	Local Connector	Local Road	4WD
Secondary Hwy	Local Road	4WD	State Route
Ramp	Interstate Route	US Route	State Route

1	2	3
4	5	6
7	8	9

ADJOINING QUADRANGLES

1 Carcass Canyon
2 Seep Flat
3 Sunset Flat
4 Petes Cove
5 Basin Canyon
6 Ship Mountain Point
7 Needle Eye Point
8 East of the Navajo

COLLET TOP, UT
2014

