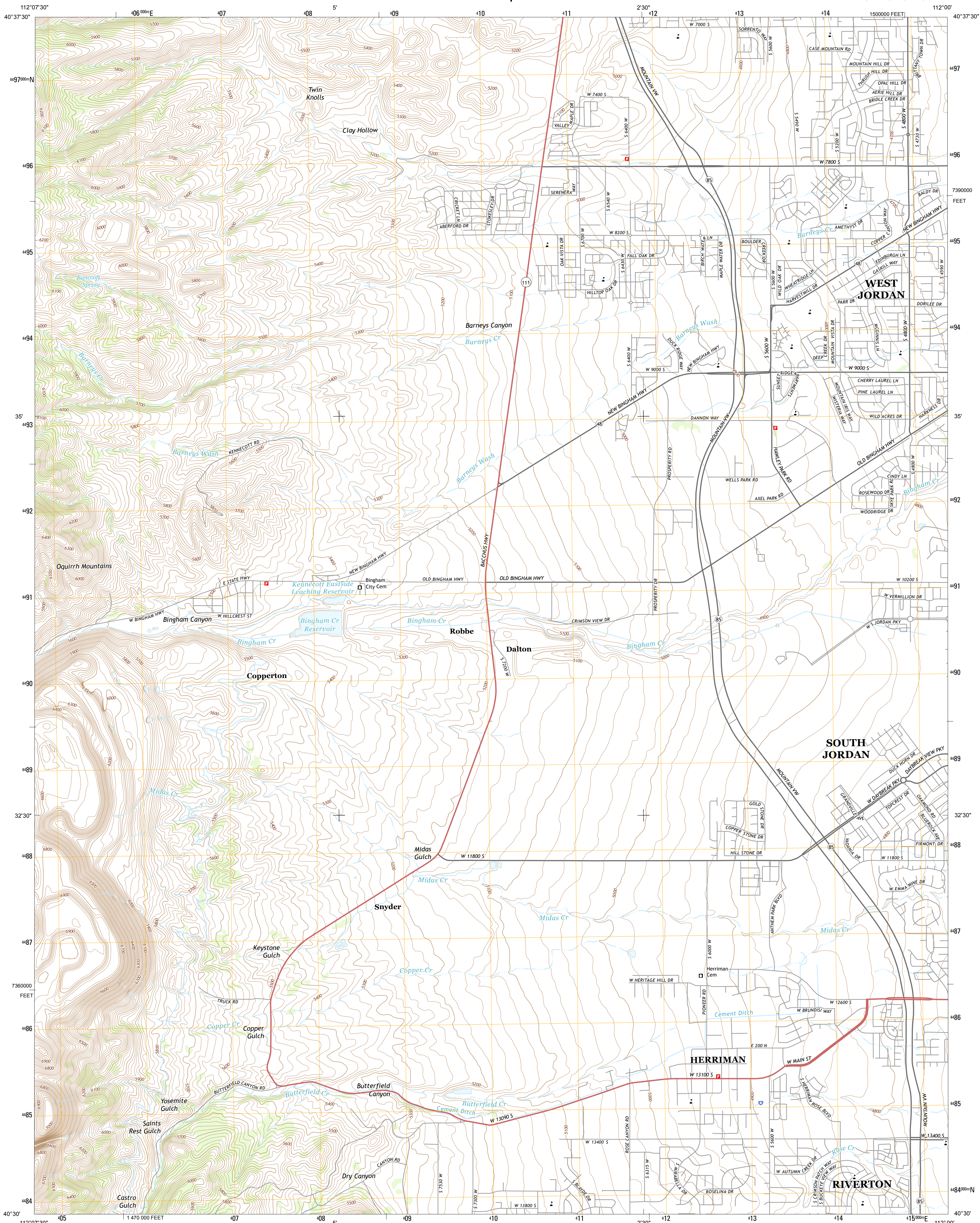




U.S. DEPARTMENT OF THE INTERIOR
U.S. GEOLOGICAL SURVEY



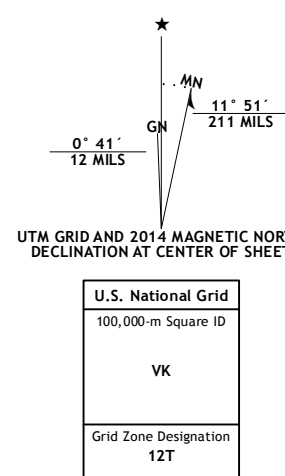
COPPERTON QUADRANGLE
UTAH-SALT LAKE CO.
7.5-MINUTE SERIES



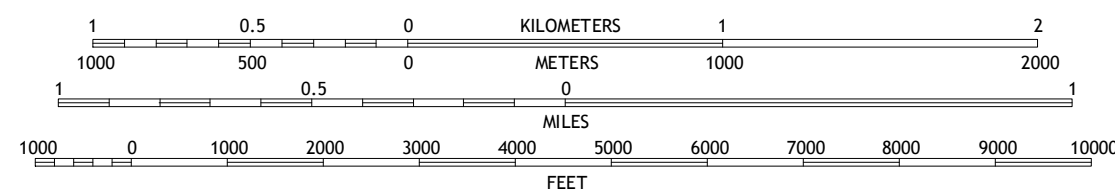
Produced by the United States Geological Survey
North American Datum of 1983 (NAD83)
World Geodetic System of 1984 (WGS84). Projection and
1 000-meter grid: Universal Transverse Mercator, Zone 12T
10 000-foot ticks: Utah Coordinate System of 1983 (central
zone)

This map is not a legal document. Boundaries may be generalized for this map scale. Private lands within government reservations may not be shown. Obtain permission before entering private lands.

Imagery.....	NAIP, July 2011
Roads.....	HERE, ©2013
Names.....	GNIS, 2013
Hydrography.....	National Hydrography Dataset, 2011
Contours.....	National Elevation Dataset, 2009
Boundaries.....	Multiple sources; see metadata file 1972 - 2013
Public Land Survey System.....	BLM, 2011

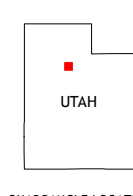


SCALE 1:24 000



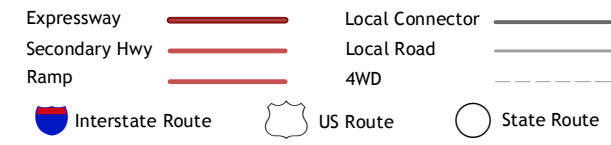
CONTOUR INTERVAL 20 FEET
NORTH AMERICAN VERTICAL DATUM OF 1988

This map was produced to conform with the
National Geospatial Program US Topo Product Standard, 2011.
A metadata file associated with this product is draft version 0.6.16



QUADRANGLE LOCATION

ROAD CLASSIFICATION



1	2	3	1 Farnsworth Peak
4		5	2 Magna
6	7	8	3 Salt Lake City South

ADJOINING QUADRANGLES

4 Bingham Canyon
5 Midvale
6 Lowe Peak
7 Tickville Spring
8 Jordan Narrows

ADJOINING QUADRANGLES

COPPERTON, UT
2014

