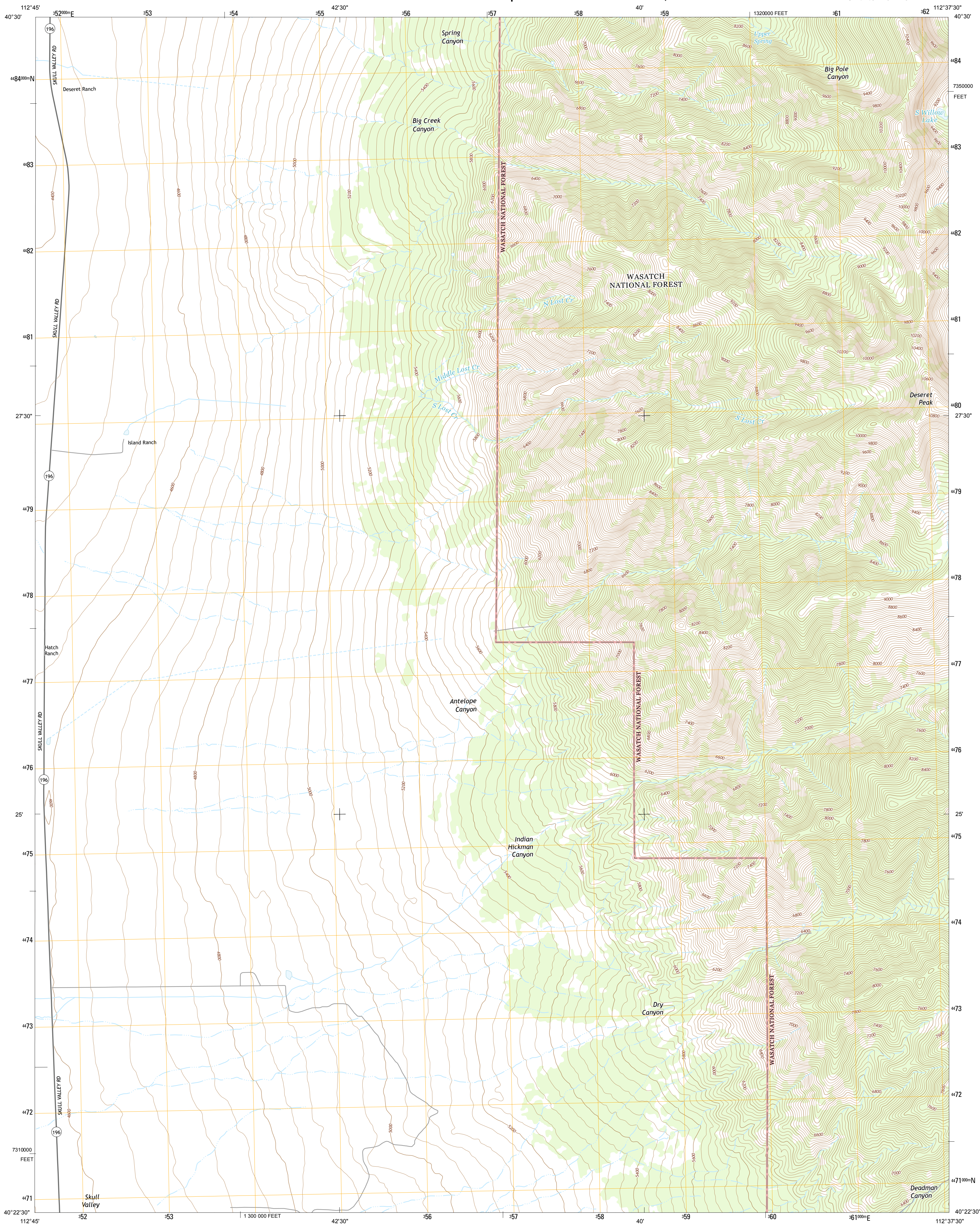




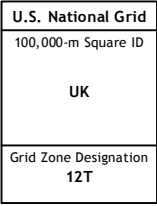
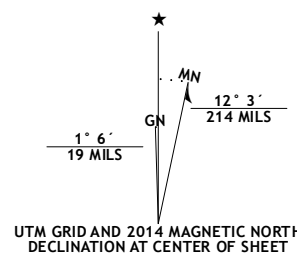
DESERET PEAK WEST QUADRANGLE  
UTAH-TOOELE CO.  
7.5-MINUTE SERIES



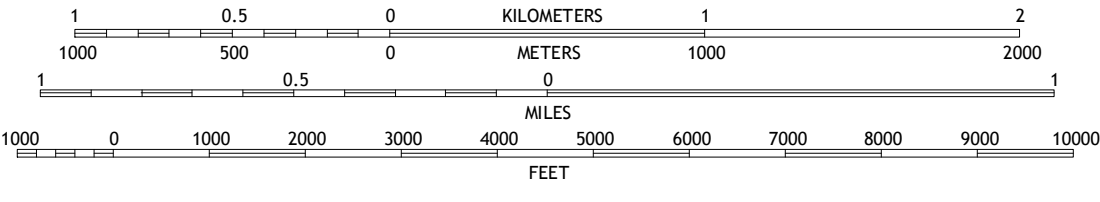
Produced by the United States Geological Survey  
North American Datum of 1983 (NAD83)  
World Geodetic System of 1984 (WGS84). Projection and  
1 000-meter grid: Universal Transverse Mercator, Zone 12T  
10 000-foot ticks: Utah Coordinate System of 1983 (central  
zone)

This map is not a legal document. Boundaries may be generalized for this map scale. Private lands within government reservations may not be shown. Obtain permission before entering private lands.

Imagery.....	NAP.....	July 2011
Roads within US Forest Service Lands.....	HERE.....	©2013
	with limited Forest Service updates,.....	FTopo Data
Names.....	GNIS.....	2013
Hydrography.....	National Hydrography Dataset.....	2011
Contours.....	National Elevation Dataset.....	2002
Boundaries.....	Multiple sources; see metadata file 172.....	2011
Public Land Survey System.....	BLM.....	2013

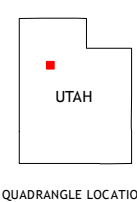


SCALE 1:24 000

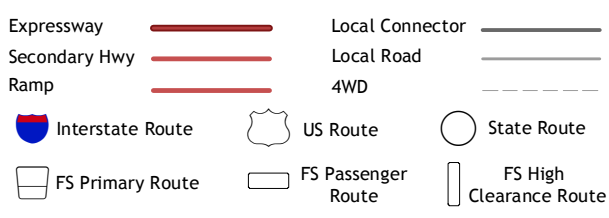


CONTOUR INTERVAL 40 FEET  
NORTH AMERICAN VERTICAL DATUM OF 1988

This map was produced to conform with the  
National Geospatial Program US Topo Product Standard, 2011.  
A metadata file associated with this product is draft version 0.6.16



## ROAD CLASSIFICATION



Check with local Forest Service unit  
for current travel conditions and restrictions.

1	2	3	1 Hastings Pass SE
			2 Salt Mountain
			3 North Willow Canyon
4		5	4 Hickman Knolls
			5 Deseret Peak East
6	7	8	6 Tabbys Peak SE
			7 Terra
			8 Johnson Pass

ADJOINING QUADRANGLES

ADJOINING QUADRANGLES

DESERET PEAK WEST, UT  
2014

