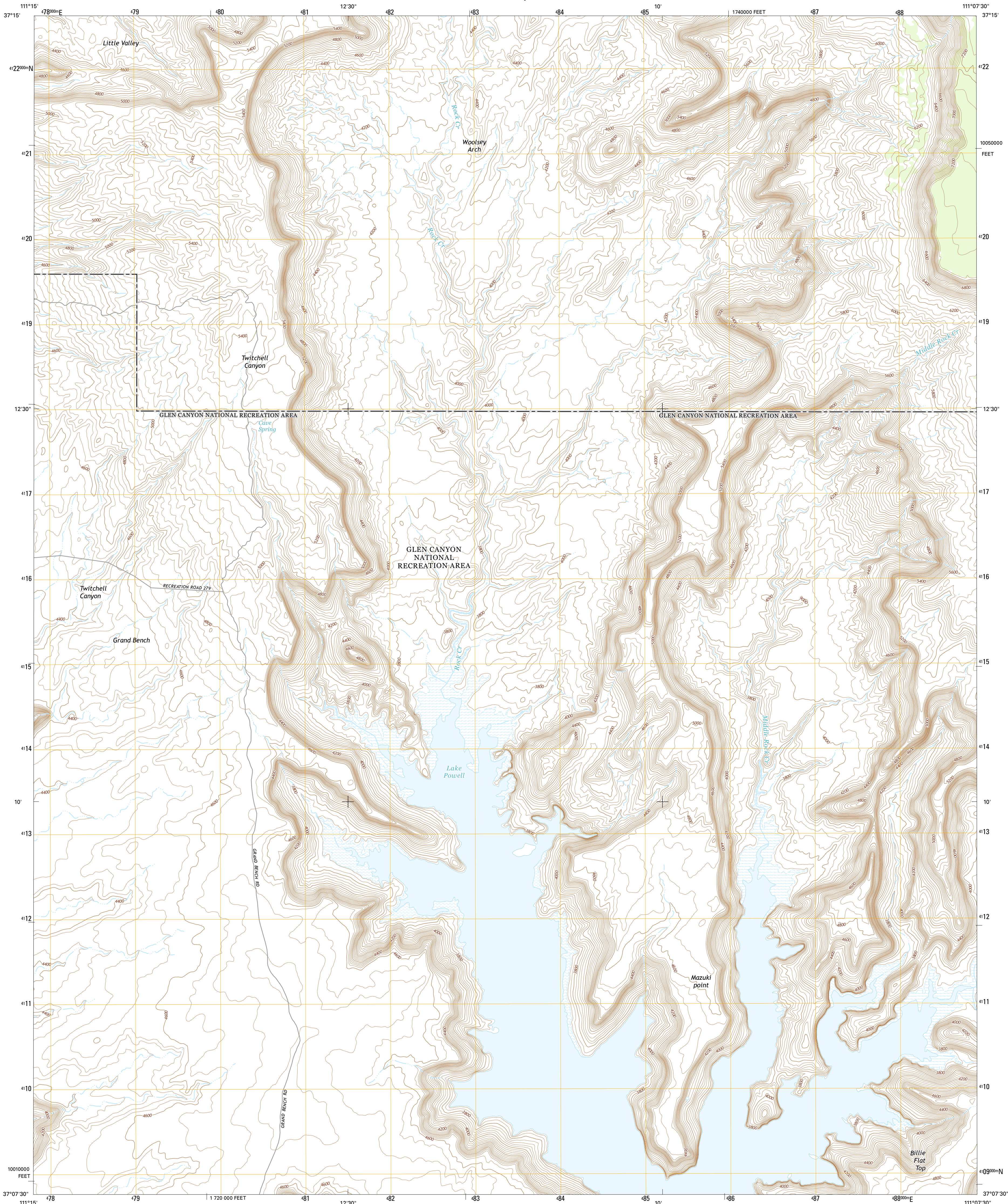




U.S. DEPARTMENT OF THE INTERIOR
U.S. GEOLOGICAL SURVEY



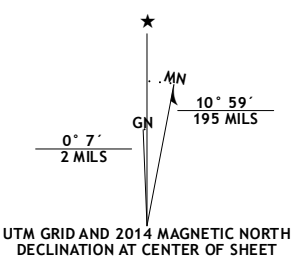
MAZUKI POINT QUADRANGLE
UTAH-KANE CO.
7.5-MINUTE SERIES



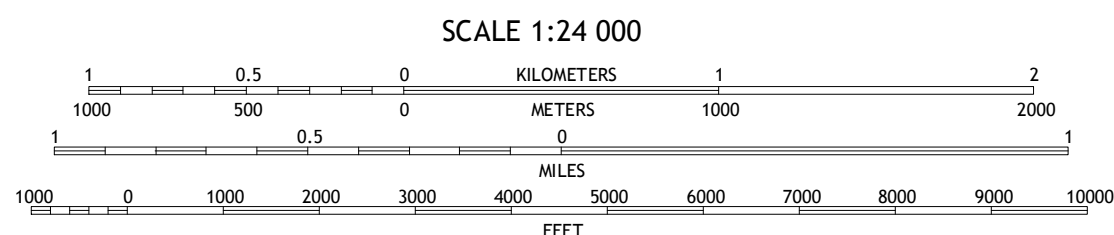
Produced by the United States Geological Survey
North American Datum of 1983 (NAD83)
World Geodetic System of 1984 (WGS84). Projection and
1 000-meter grid: Universal Transverse Mercator, Zone 12S
10 000-foot ticks: Utah Coordinate System of 1983 (south zone)

This map is not a legal document. Boundaries may be
generalized for this map scale. Private lands within government
reservations may not be shown. Obtain permission before
entering private lands.

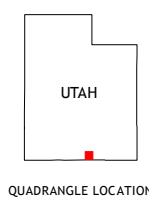
Imagery.....NAIP, June 2011
Roads.....HERE, ©2013
Names.....GNIS, 2013
Hydrography.....National Hydrography Dataset, 2011
Contours.....National Elevation Dataset, 1999
Boundaries.....Multiple sources; see metadata file 1972-2013
Public Land Survey System.....BLM, 2011



| U.S. National Grid |
|-----------------------|
| 100,000-m Square ID |
| VG |
| Grid Zone Designation |
| 12S |



CONTOUR INTERVAL 40 FEET
NORTH AMERICAN VERTICAL DATUM OF 1988
This map was produced to conform with the
National Geospatial Program US Topo Product Standard, 2011.
A metadata file associated with this product is draft version 0.6.16



| ROAD CLASSIFICATION | | | |
|---------------------|------------------|------------|-------------|
| Expressway | Local Connector | Local Road | 4WD |
| Secondary Hwy | Local Road | 4WD | State Route |
| Ramp | Interstate Route | US Route | State Route |

| | | |
|---|---|---|
| 1 | 2 | 3 |
| 4 | 5 | 6 |
| 7 | 8 | 9 |

ADJOINING QUADRANGLES

1 East of the Navajo
2 Blackburn Canyon
3 Sooner Bench
4 Sit Down Bench
5 Navajo Point
6 Gunsight Butte
7 Gregory Butte
8 Cathedral Canyon

MAZUKI POINT, UT
2014

