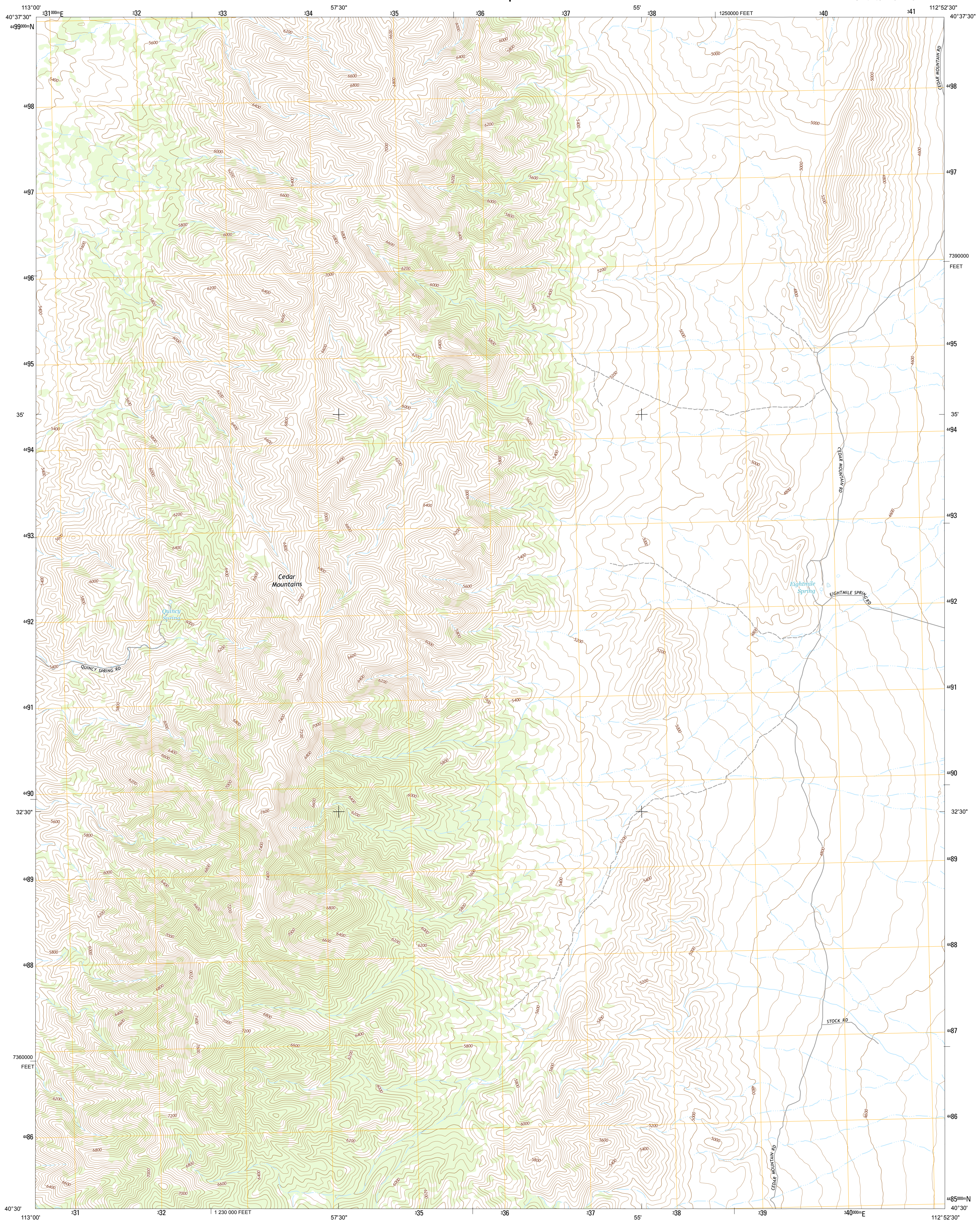




U.S. DEPARTMENT OF THE INTERIOR  
U.S. GEOLOGICAL SURVEY



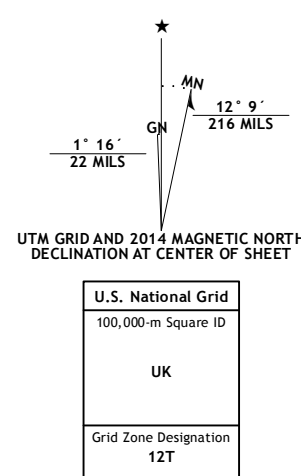
QUINCY SPRING QUADRANGLE  
UTAH-TOOELE CO.  
7.5-MINUTE SERIES



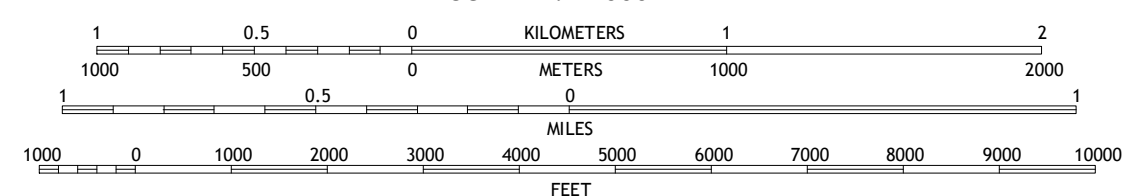
**Produced by the United States Geological Survey**  
North American Datum of 1983 (NAD83)  
World Geodetic System of 1984 (WGS84). Projection and  
1 000-meter grid: Universal Transverse Mercator, Zone 12T  
10 000-foot ticks: Utah Coordinate System of 1983 (central  
zone)

This map is not a legal document. Boundaries may be generalized for this map scale. Private lands within government reservations may not be shown. Obtain permission before entering private lands.

Imagery.....	NAIP, July 2011
Roads.....	HERE, ©2013
Names.....	GNIS, 2013
Hydrography.....	National Hydrography Dataset, 2011
Contours.....	National Elevation Dataset, 2002
Boundaries.....	Multiple sources; see metadata file 1972 - 2013
Public Land Survey System.....	BLM, 2011

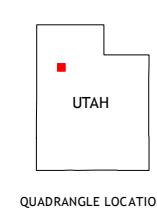


SCALE 1:24 000



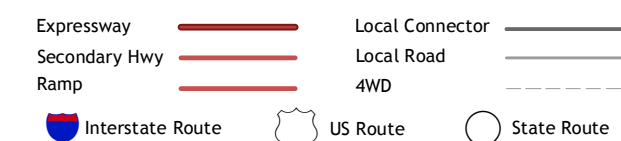
CONTOUR INTERVAL 40 FEET  
NORTH AMERICAN VERTICAL DATUM OF 1988

This map was produced to conform with the  
National Geospatial Program US Topo Product Standard, 2011.  
A metadata file associated with this product is draft version 0.6.16



QUADRANGLE LOCATION

ROAD CLASSIFICATION



QUINCY SPRING, UT  
2014

1	2	3	1 Aragonite
			2 Hastings Pass
			3 Hastings Pass NE
4		5	4 Aragonite SE
			5 Hastings Pass SE
6	7	8	6 Wig Mountain NE
			7 Tabbys Peak
			8 Hickman Knolls

ADJOINING QUADRANGLES

ADJOINING QUADRANGLES

