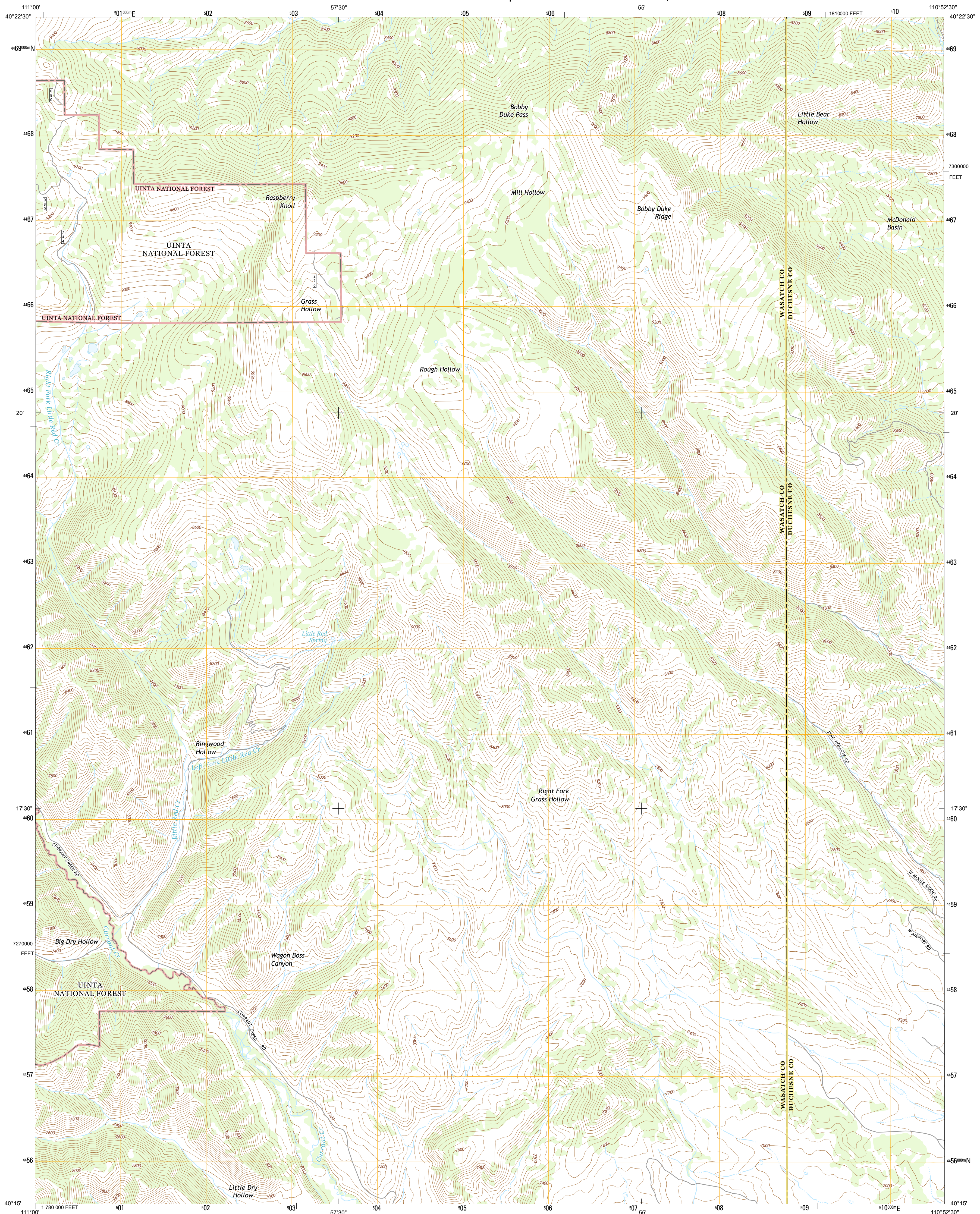




U.S. DEPARTMENT OF THE INTERIOR
U.S. GEOLOGICAL SURVEY



RASPBERRY KNOLL QUADRANGLE
UTAH
7.5-MINUTE SERIES

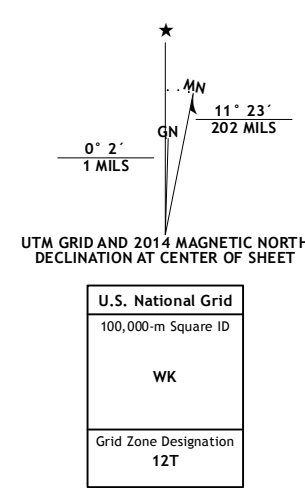


Produced by the United States Geological Survey

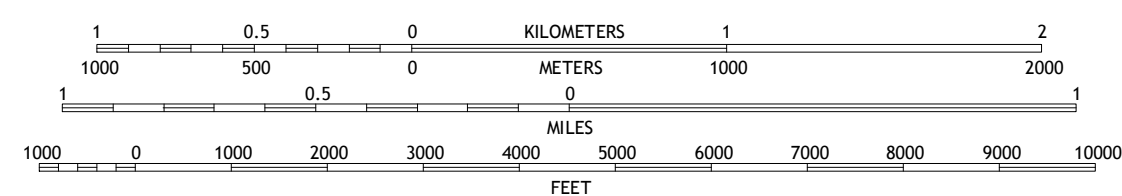
Produced by the United States Geological Survey
North American Datum of 1983 (NAD83)
World Geodetic System of 1984 (WGS84). Projection and
1 000-meter grid: Universal Transverse Mercator, Zone 12T
10 000-foot ticks: Utah Coordinate System of 1983 (central
zone)

This map is not a legal document. Boundaries may be generalized for this map scale. Private lands within government reservations may not be shown. Obtain permission before entering private lands.

Imagery.....	NAIP, August 2001	20
Roads.....	HERE, ©2001	20
Roads within US Forest Service Lands.....	FSTopo with limited Forest Service updates,	20
Names.....	GNIS	20
Hydrography.....	National Hydrography Dataset,	20
Contours.....	National Elevation Dataset,	20
Boundaries.....	Multiple sources; see metadata file 1972	20
Public Land Survey System.....	BLM,	20

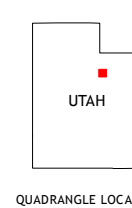


SCALE 1:24 000



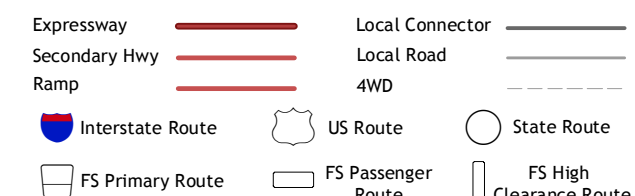
CONTOUR INTERVAL 40 FEET
NORTH AMERICAN VERTICAL DATUM OF 1988

This map was produced to conform with the
National Geospatial Program US Topo Product Standard, 2011.
Data file associated with this product is draft version 0.6.16



QUADRANGLE LOCATION

ROAD CLASSIFICATION



Check with local Forest Service unit
for current travel conditions and restrictions.

RASPBERRY KNOLL, UT
2014

1	2	3	1 Wolf Creek Summit
4		5	2 Wolf Creek
6	7	8	3 Hanna

ADJOINING QUADRANGLES

- 4 Jimmies Point
- 5 Tabby Mountain
- 6 Strawberry Reservoir NE
- 7 Deep Creek Canyon
- 8 Fruitland

