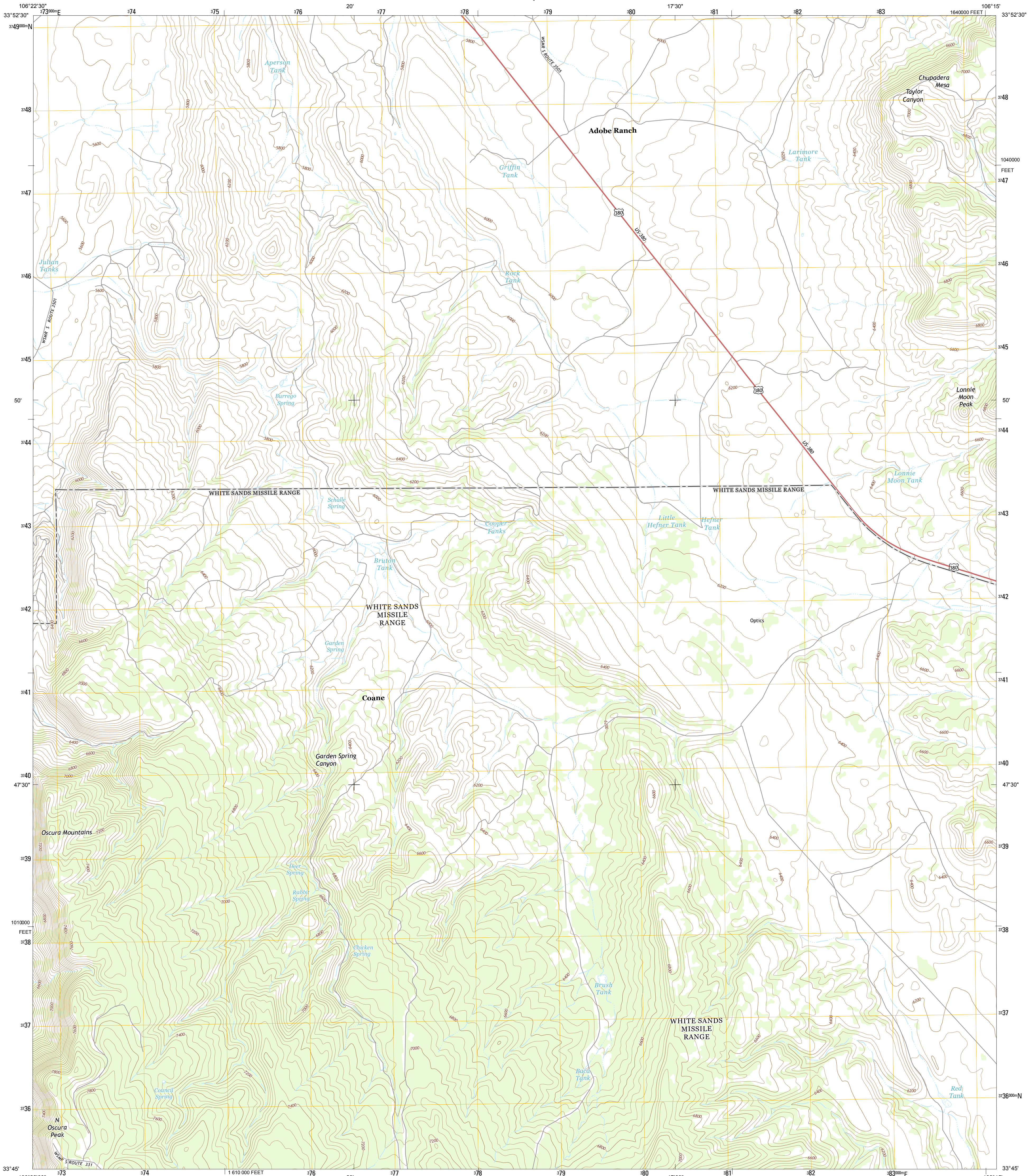




U.S. DEPARTMENT OF THE INTERIOR
U. S. GEOLOGICAL SURVEY



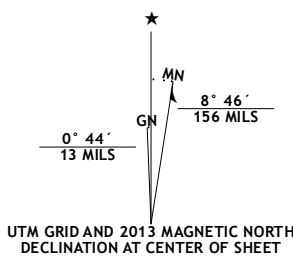
GARDEN SPRING CANYON QUADRANGLE
NEW MEXICO-SOCORRO CO.
7.5-MINUTE SERIES



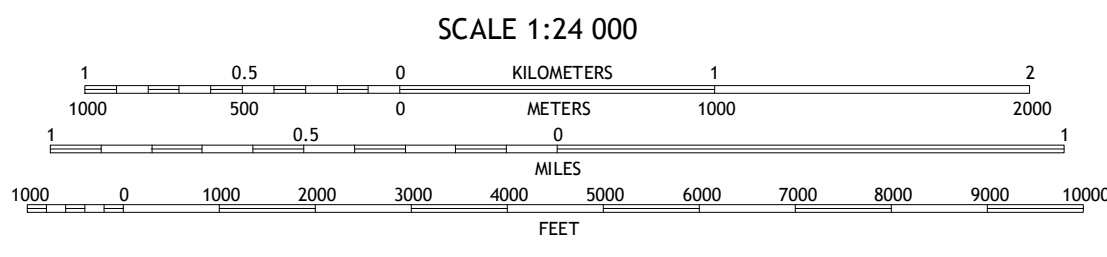
Produced by the United States Geological Survey
North American Datum of 1983 (NAD83)
World Geodetic System of 1984 (WGS84). Projection and
1 000-meter grid: Universal Transverse Mercator, Zone 13S
10 000-foot ticks: New Mexico Coordinate System of 1983
(central zone)

This map is not a legal document. Boundaries may be
generalized for this map scale. Private lands within government
reservations may not be shown. Obtain permission before
entering private lands.

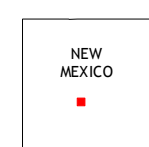
Imagery.....NAIP, July 2009
Roads.....©2006-2013 TomTom
Names.....GNIS, 2013
Hydrography.....National Hydrography Dataset, 2009
Contours.....National Elevation Dataset, 2000
Boundaries.....Census, IBWC, IBC, USGS, 1972 - 2012
Public Land Survey System.....BLM, 2011



U.S. National Grid
100,000-m Square ID
CT
Grid Zone Designation
13S



This map was produced to conform with the
National Geospatial Program US Topo Product Standard, 2011.
A metadata file associated with this product is draft version 0.6.15



QUADRANGLE LOCATION

Wyre Peak NW	Wyre Peak	Cooper Canyon
Wyre Peak SW	Garden Spring Canyon	Pink Peak
Trinity Site	Oscura Peak	Red Canyon

ADJOINING 7.5' QUADRANGLES

ROAD CLASSIFICATION			
Expressway	Secondary Hwy	Ramp	Interstate Route
Local Connector	Local Road	4WD	US Route
			State Route

GARDEN SPRING CANYON, NM
2013

