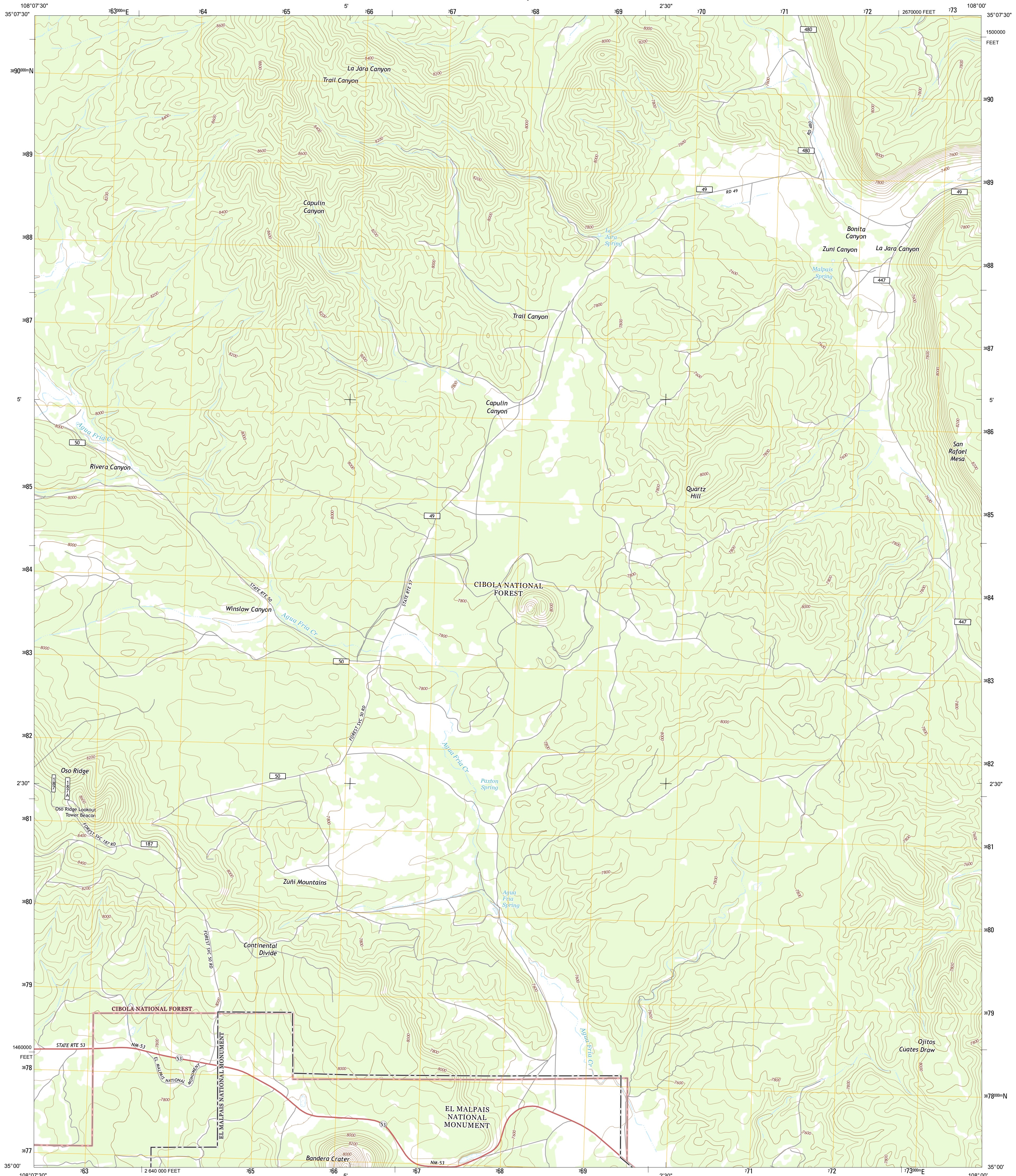




U.S. DEPARTMENT OF THE INTERIOR
U. S. GEOLOGICAL SURVEY



PAXTON SPRINGS QUADRANGLE
NEW MEXICO-CIBOLA CO.
7.5-MINUTE SERIES



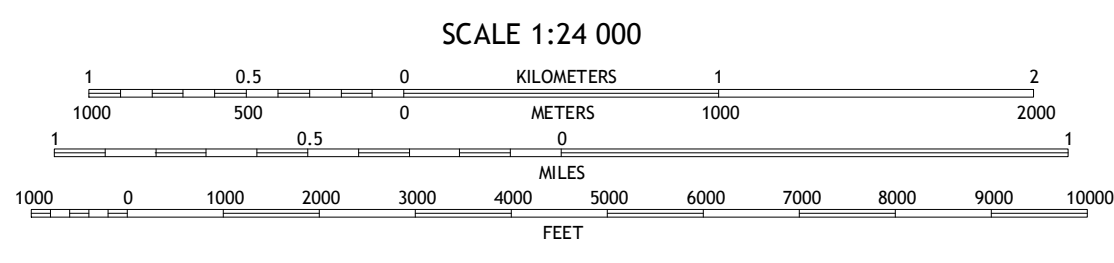
Produced by the United States Geological Survey
North American Datum of 1983 (NAD83)
World Geodetic System of 1984 (WGS84) Projection and
1 000-meter grid: Universal Transverse Mercator, Zone 12S
10 000-foot ticks: New Mexico Coordinate System of 1983 (west zone)

This map is not a legal document. Boundaries may be generalized for this map scale. Private lands within government reservations may not be shown. Obtain permission before entering private lands.

Imagery.....N.A.P., May 2011
Roads.....2006-2013 TomTom
Roads within US Forest Service Lands.....FS Topo Data
with limited Forest Service updates, 2013
Names.....GNIS, 2013
Hydrography.....National Hydrography Dataset, 2011
Contours.....National Elevation Dataset, 2000
Boundaries.....BWC, IBC, USGS, 1972 - 2012
Public Land Survey System.....BLM, 2011

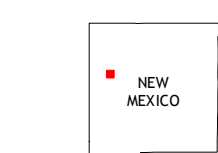
UTM GRID AND 2013 MAGNETIC NORTH DECLINATION AT CENTER OF SHEET

U.S. National Grid
100,000-m Square ID
YD
Grid Zone Designation
12S



CONTOUR INTERVAL 40 FEET
NORTH AMERICAN VERTICAL DATUM OF 1988

This map was produced to conform with the
National Geospatial Program US Topo Product Standard, 2011.
A metadata file associated with this product is draft version 0.6.15



QUADRANGLE LOCATION		
Post Office Flat	Mount Sedgwick	Milan
Valle Largo	Paxton Springs	San Rafael
Cerro Huaco	Ice Caves	Arrosa Ranch

ROAD CLASSIFICATION

Expressway
Secondary Hwy
Ramp
Interstate Route
FS Primary Route

Local Connector
Local Road
4WD
US Route
FS Passenger Route
State Route
FS High Clearance Route

Check with local Forest Service unit for current travel conditions and restrictions.

PAXTON SPRINGS, NM
2013

