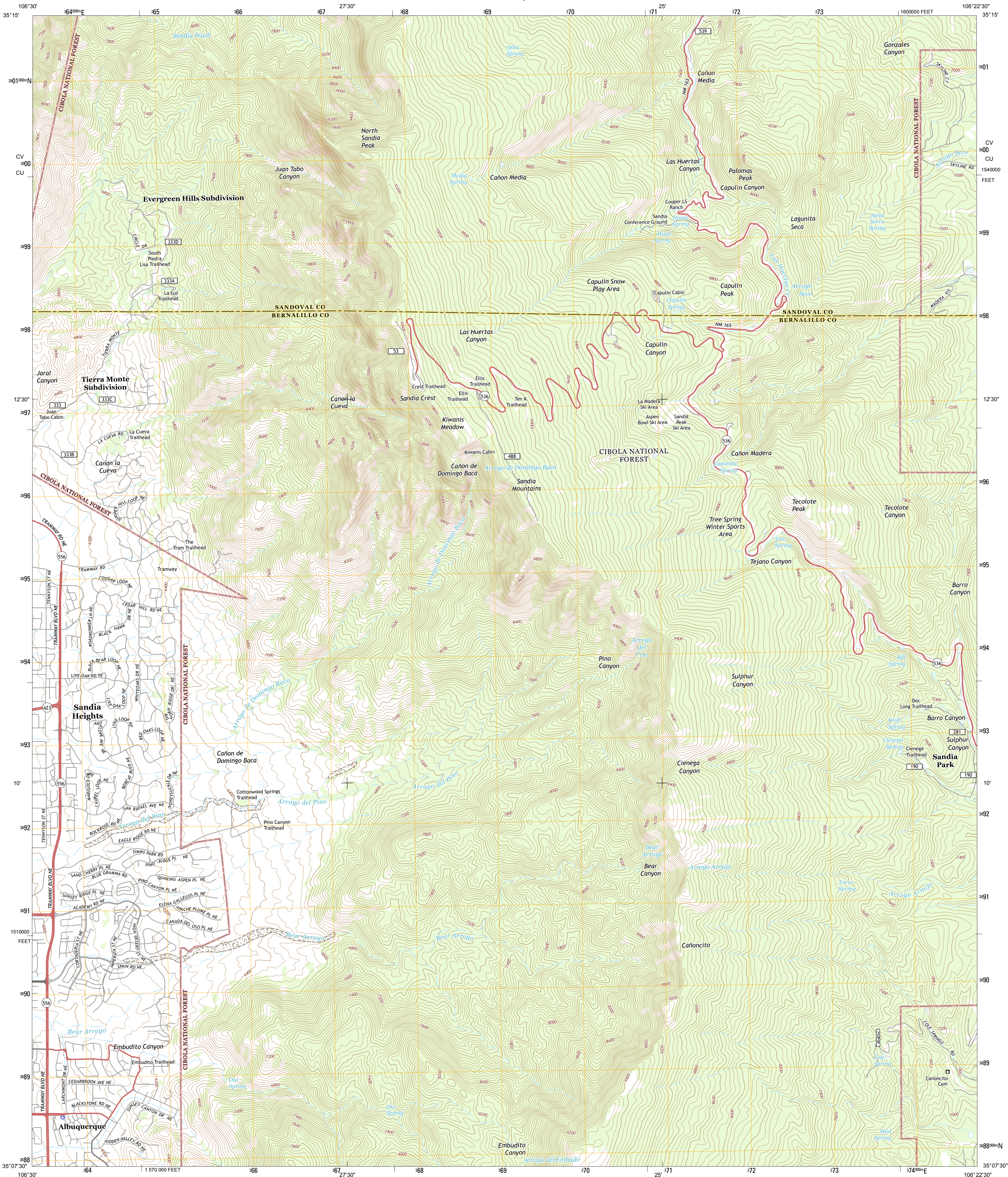




U.S. DEPARTMENT OF THE INTERIOR  
U. S. GEOLOGICAL SURVEY



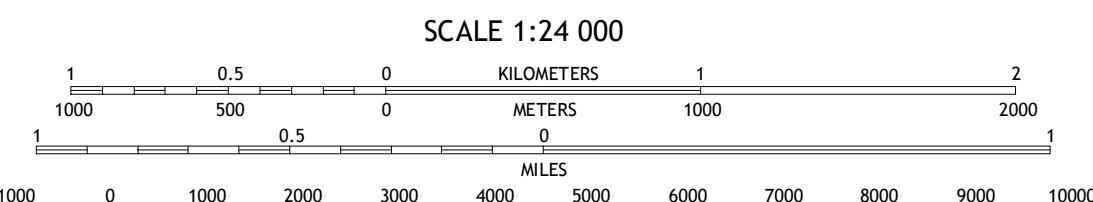
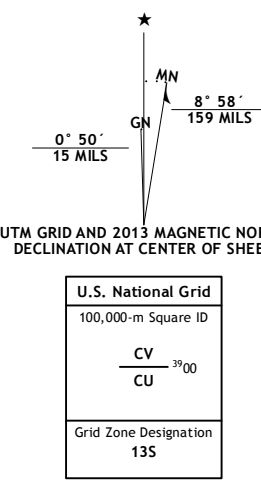
SANDIA CREST QUADRANGLE  
NEW MEXICO  
7.5-MINUTE SERIES



Produced by the United States Geological Survey  
North American Datum of 1983 (NAD83)  
World Geodetic System of 1984 (WGS84) Projection and  
1 000-meter grid: Universal Transverse Mercator, Zone 13S  
10 000-foot ticks: New Mexico Coordinate System of 1983  
(central zone)

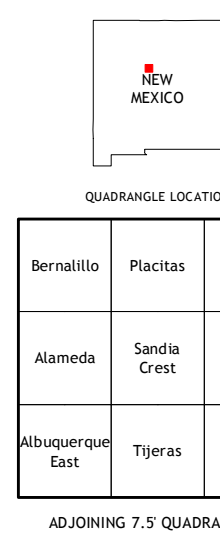
This map is not a legal document. Boundaries may be  
generalized for this map scale. Private lands within government  
reservations may not be shown. Obtain permission before  
entering private lands.

Imagery.....NAIP, May 2011  
Roads.....©2006-2013 TomTom  
Roads within US Forest Service Lands.....FS Topo Data  
with limited Forest Service updates, 2013  
Names.....GNIS, 2013  
Hydrography.....National Hydrography Dataset, 2011  
Contours.....National Elevation Dataset, 1999  
Boundaries.....Census, BWC, IBC, USGS, 1972-2012  
Public Land Survey System.....BLM, 2011



CONTOUR INTERVAL 40 FEET  
NORTH AMERICAN VERTICAL DATUM OF 1988

This map was produced to conform with the  
National Geospatial Program US Topo Product Standard, 2011.  
A metadata file associated with this product is draft version 0.6.15



ROAD CLASSIFICATION

Expressway  
Secondary Hwy  
Ramp  
Interstate Route  
FS Primary Route

Local Connector  
Local Road  
4WD  
US Route  
FS Passenger Route  
State Route  
FS High Clearance Route

Check with local Forest Service unit  
for current travel conditions and restrictions.

SANDIA CREST, NM  
2013

