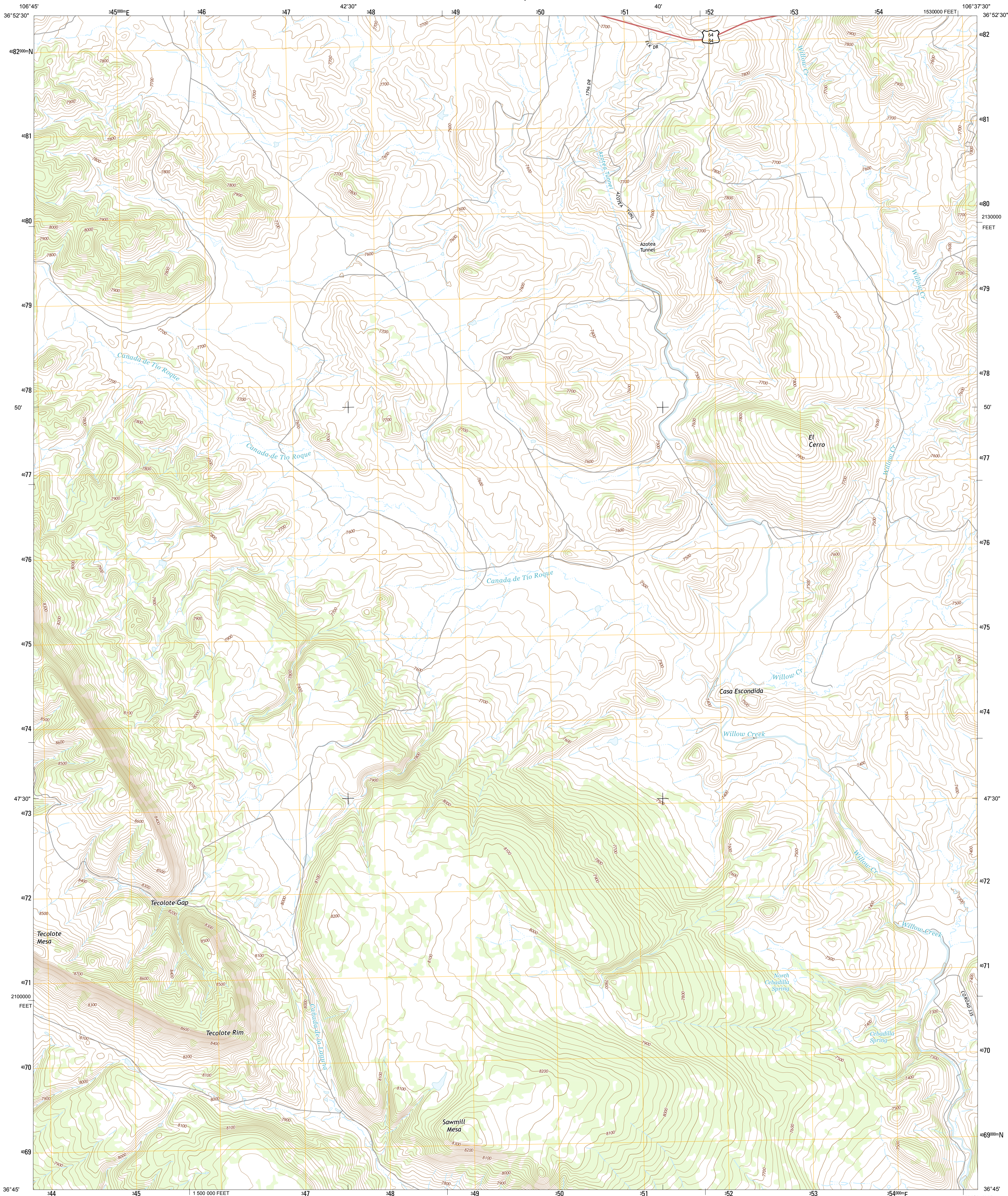




U.S. DEPARTMENT OF THE INTERIOR  
U. S. GEOLOGICAL SURVEY



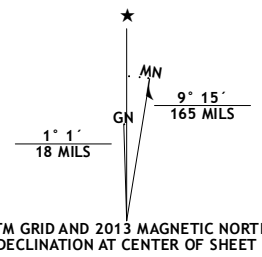
SAWMILL MESA QUADRANGLE  
NEW MEXICO-RIO ARriba CO.  
7.5-MINUTE SERIES



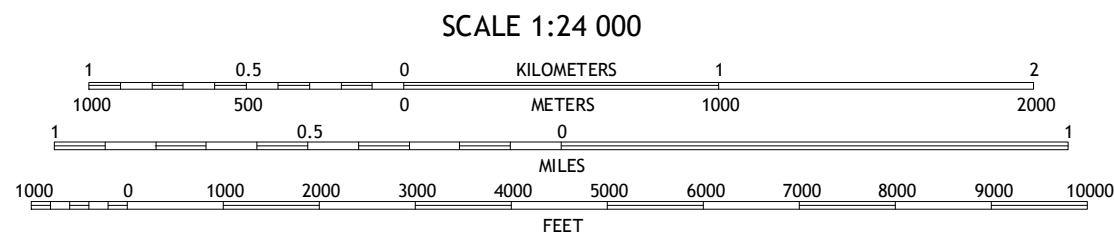
Produced by the United States Geological Survey  
North American Datum of 1983 (NAD83)  
World Geodetic System of 1984 (WGS84) Projection and  
1 000-meter grid: Universal Transverse Mercator, Zone 13S  
10 000-foot ticks: New Mexico Coordinate System of 1983  
(central zone)

This map is not a legal document. Boundaries may be  
generalized for this map scale. Private lands within government  
reservations may not be shown. Obtain permission before  
entering private lands.

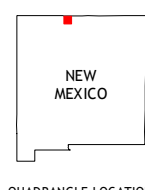
Imagery.....NAIP, May 2011 - June 2011  
Roads.....©2006-2013 TomTom  
Names.....GNIS, 2013  
Hydrography.....National Hydrography Dataset, 2011  
Contours.....National Elevation Dataset, 2001  
Boundaries.....Census, IBWC, IBC, USGS, 1972 - 2012  
Public Land Survey System.....BLM, 2011



U.S. National Grid
100,000-m Square ID
CA
Grid Zone Designation
13S

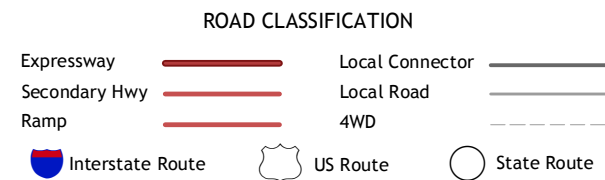


CONTOUR INTERVAL 20 FEET  
NORTH AMERICAN VERTICAL DATUM OF 1988  
This map was produced to conform with the  
National Geospatial Program US Topo Product Standard, 2011.  
A metadata file associated with this product is draft version 0.6.15



Monero	Chromo Mountain	Chama
Horse Lake	Sawmill Mesa	Brazos
Apache Mesa	Heron Reservoir	Tierra Amarilla

ADJOINING 7.5 QUADRANGLES



SAWMILL MESA, NM  
2013



NSN 7643 0163 8400 00  
NGA REF NO. USGS X 2 4 K 7 1529