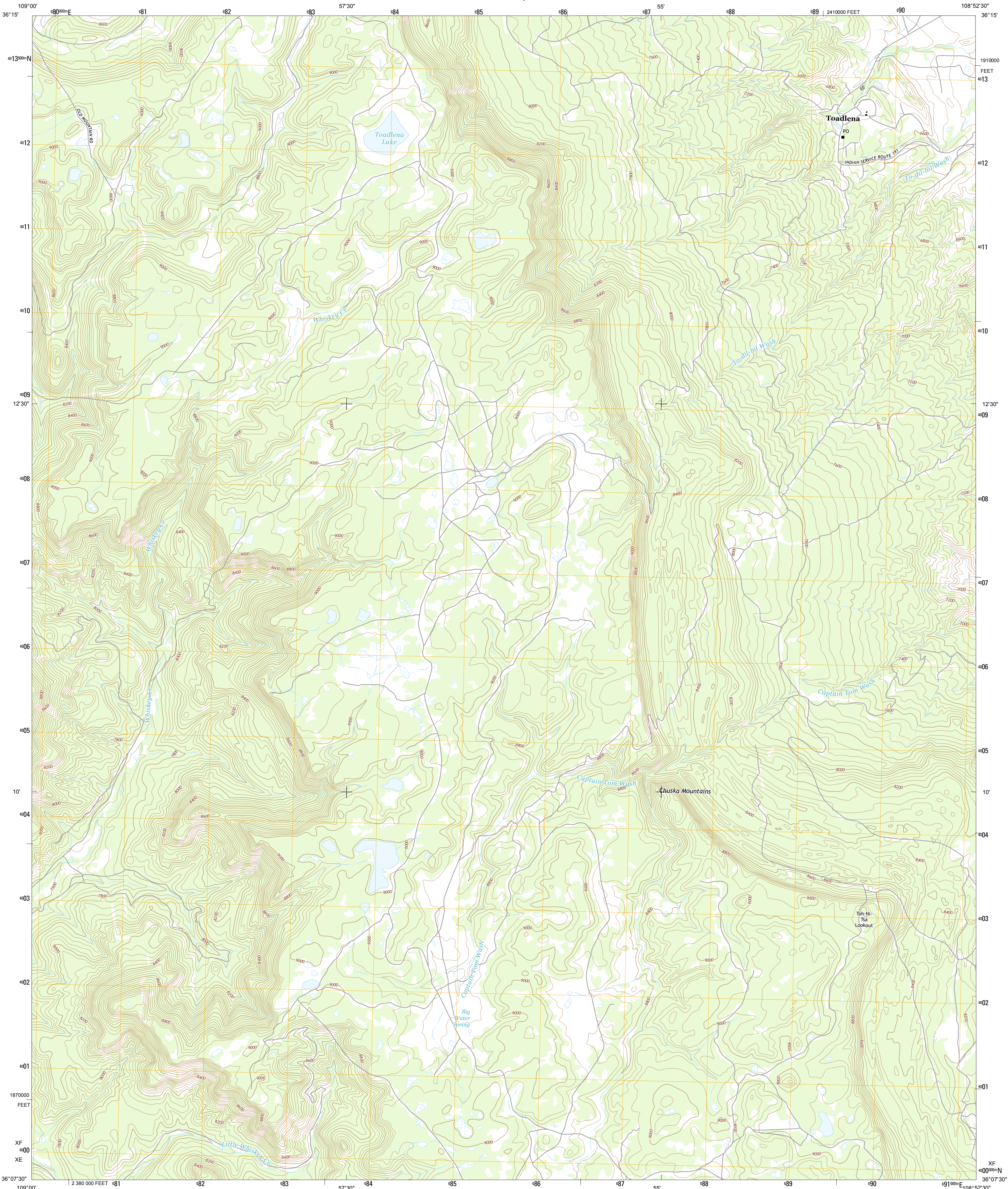




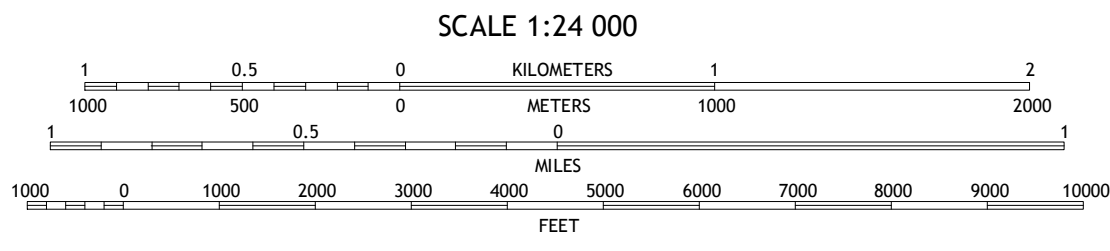
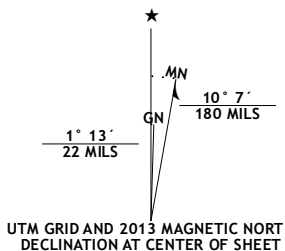
U.S. DEPARTMENT OF THE INTERIOR  
U. S. GEOLOGICAL SURVEY



TOADLENA QUADRANGLE  
NEW MEXICO-SAN JUAN CO.  
7.5-MINUTE SERIES



**Produced by the United States Geological Survey**  
North American Datum of 1983 (NAD83)  
World Geodetic System of 1984 (WGS84). Projection and  
1 000-meter grid: Universal Transverse Mercator, Zone 12S  
10 000-foot ticks: New Mexico Coordinate System of 1983 (west  
zone)  
  
This map is not a legal document. Boundaries may be  
generalized for this map scale. Private lands within government  
reservations may not be shown. Obtain permission before  
entering private lands.  
  
Imagery.....NAP, May 2011  
Roads.....©2006-2013 TomTom  
Names.....GNIS, 2013  
Hydrography.....National Hydrography Dataset, 2011  
Contours.....National Elevation Dataset, 1999  
Boundaries.....Census, IBWC, IBC, USGS, 1972 - 2012  
Public Land Survey System.....BLM, 2011



CONTOUR INTERVAL 40 FEET  
NORTH AMERICAN VERTICAL DATUM OF 1988  
  
This map was produced to conform with the  
National Geospatial Program US Topo Product Standard, 2011.  
A metadata file associated with this product is draft version 0.6.15



|                   |                 |                |
|-------------------|-----------------|----------------|
| Tsala Butte       | Old Pine Spring | Tsin-nas-kid   |
| Upper Wheatfields | Toadlena        | Two Grey Hills |
| Sonsela Buttes    | Crystal         | Narbonna Pass  |

ADJOINING 7.5' QUADRANGLES

| ROAD CLASSIFICATION |                 |             |
|---------------------|-----------------|-------------|
| Expressway          | Local Connector |             |
| Secondary Hwy       | Local Road      |             |
| Ramp                | 4WD             |             |
| Interstate Route    | US Route        | State Route |

TOADLENA, NM  
2013

