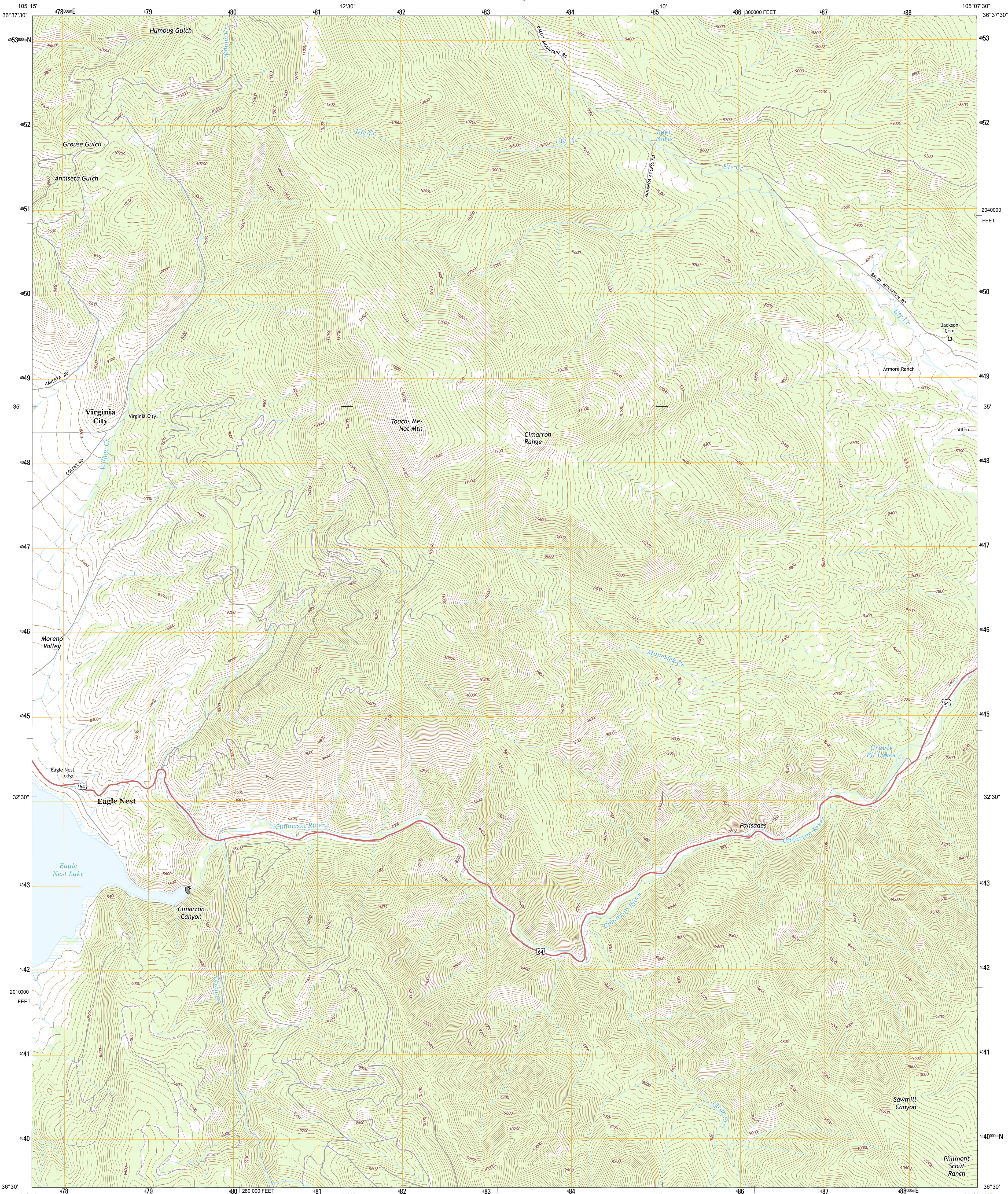




U.S. DEPARTMENT OF THE INTERIOR
U. S. GEOLOGICAL SURVEY



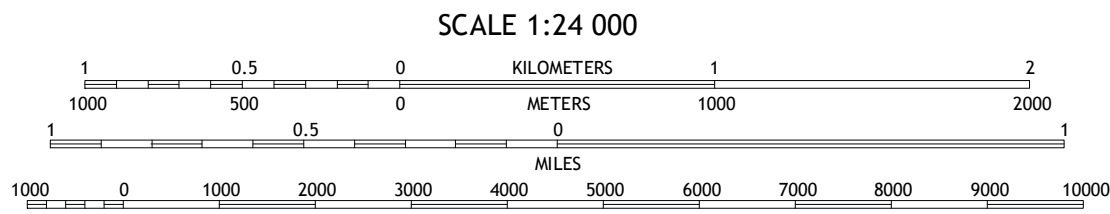
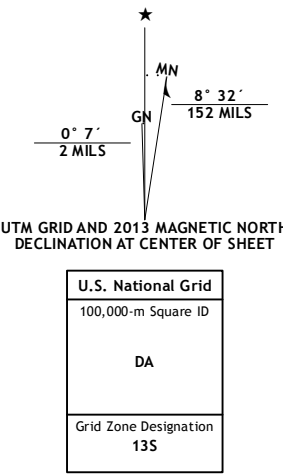
TOUCH-ME-NOT MOUNTAIN QUADRANGLE
NEW MEXICO-COLFAX CO.
7.5-MINUTE SERIES



Produced by the United States Geological Survey
North American Datum of 1983 (NAD83)
World Geodetic System of 1984 (WGS84) Projection and
1 000-meter grid: Universal Transverse Mercator, Zone 13S
10 000-foot ticks: New Mexico Coordinate System of 1983 (east zone)

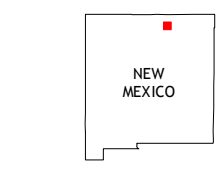
This map is not a legal document. Boundaries may be generalized for this map scale. Private lands within government reservations may not be shown. Obtain permission before entering private lands.

Imagery.....NAIP, May 2011
Roads.....©2006-2013 TomTom
Names.....National Hydrography Dataset, 2011
Hydrography.....National Elevation Dataset, 2000
Contours.....Census, IBWC, IBC, USGS, 1972-2012
Boundaries.....BLM, 2011

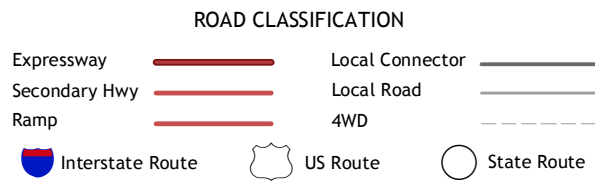


CONTOUR INTERVAL 40 FEET
NORTH AMERICAN VERTICAL DATUM OF 1988

This map was produced to conform with the
National Geospatial Program US Topo Product Standard, 2011.
A metadata file associated with this product is draft version 0.6.15



Red River Pass	Baldy Mountain	Abreu Canyon
Eagle Nest	Touch-Me-Not Mountain	Ute Park
Palo Flechado Pass	Garcia Peak	Tooth of Time



TOUCH-ME-NOT MOUNTAIN, NM
2013

