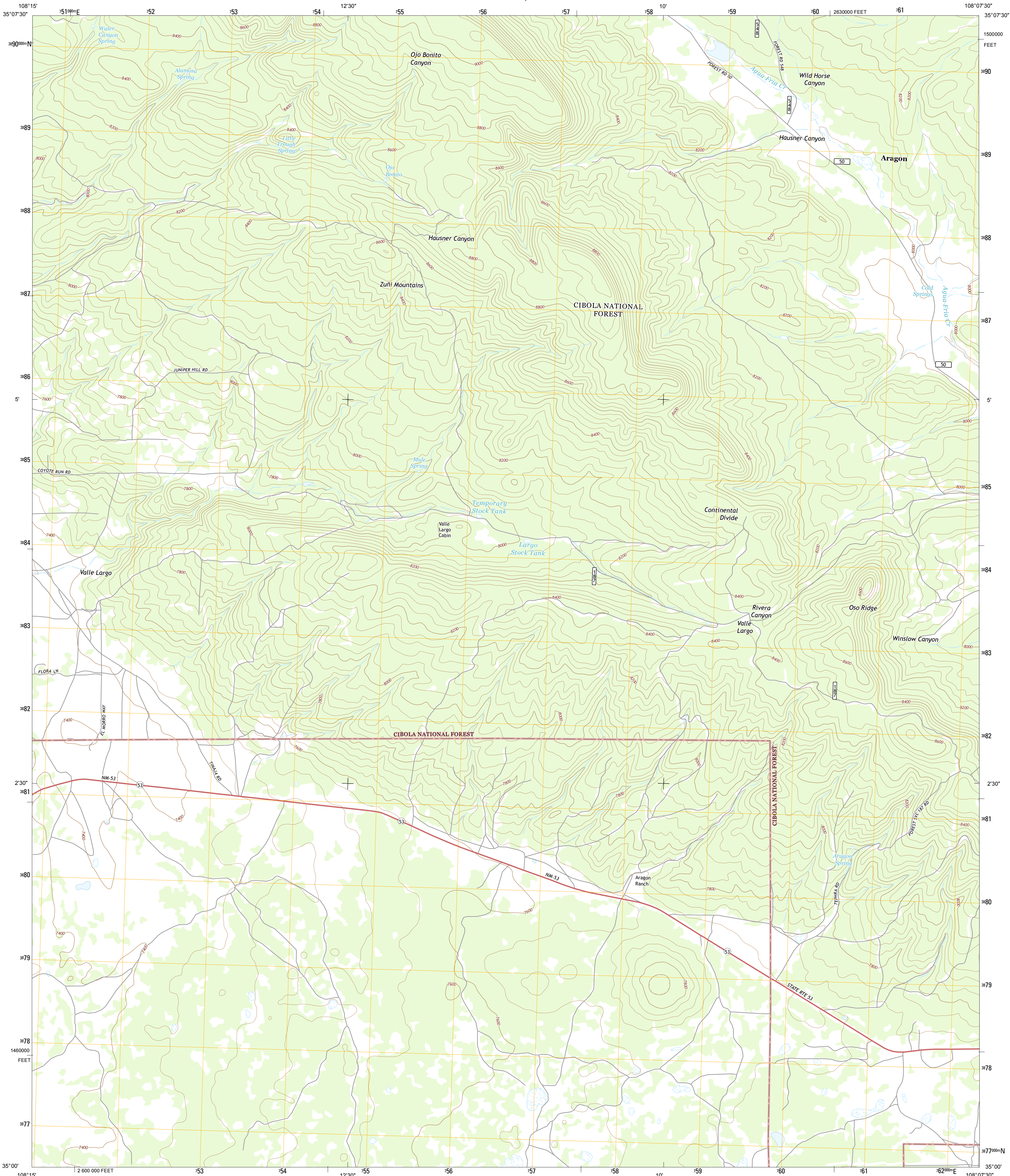




U.S. DEPARTMENT OF THE INTERIOR
U. S. GEOLOGICAL SURVEY



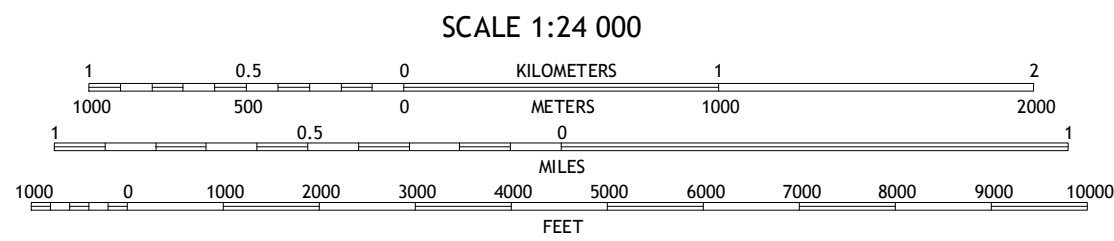
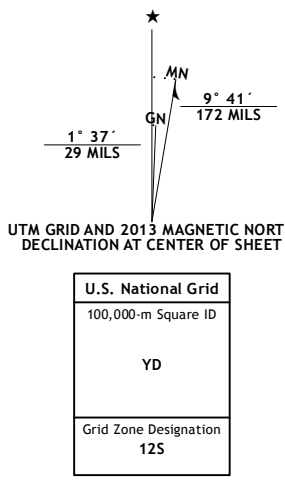
VALLE LARGO QUADRANGLE
NEW MEXICO-CIBOLA CO.
7.5-MINUTE SERIES



Produced by the United States Geological Survey
North American Datum of 1983 (NAD83)
World Geodetic System of 1984 (WGS84) Projection and
1 000-meter grid: Universal Transverse Mercator, Zone 12S
10 000-foot ticks: New Mexico Coordinate System of 1983 (west zone)

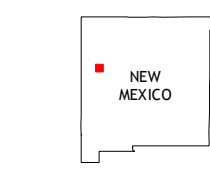
This map is not a legal document. Boundaries may be generalized for this map scale. Private lands within government reservations may not be shown. Obtain permission before entering private lands.

Imagery.....NAP, May 2011
Roads.....2006-2013 TomTom
Roads within US Forest Service Lands.....FS Topo Data with limited Forest Service updates, 2013
Names.....GNIS, 2013
Hydrography.....National Hydrography Dataset, 2011
Contours.....National Elevation Dataset, 2000
Boundaries.....BWC, IBC, USGS, 1972 - 2012
Public Land Survey System.....BLM, 2011



CONTOUR INTERVAL 40 FEET
NORTH AMERICAN VERTICAL DATUM OF 1988

This map was produced to conform with the
National Geospatial Program US Topo Product Standard, 2011.
A metadata file associated with this product is draft version 0.6.15



Kettner Canyon	Post Office Flat	Mount Sedwick
El Morro	Valle Largo	Paxton Springs
Goat Hill	Cerro Hueco	Ice Caves

ROAD CLASSIFICATION
Expressway Local Connector
Secondary Hwy Local Road
Ramp 4WD
Interstate Route US Route
FS Primary Route FS Passenger Route
FS High Clearance Route

Check with local Forest Service unit for current travel conditions and restrictions.

VALLE LARGO, NM
2013

