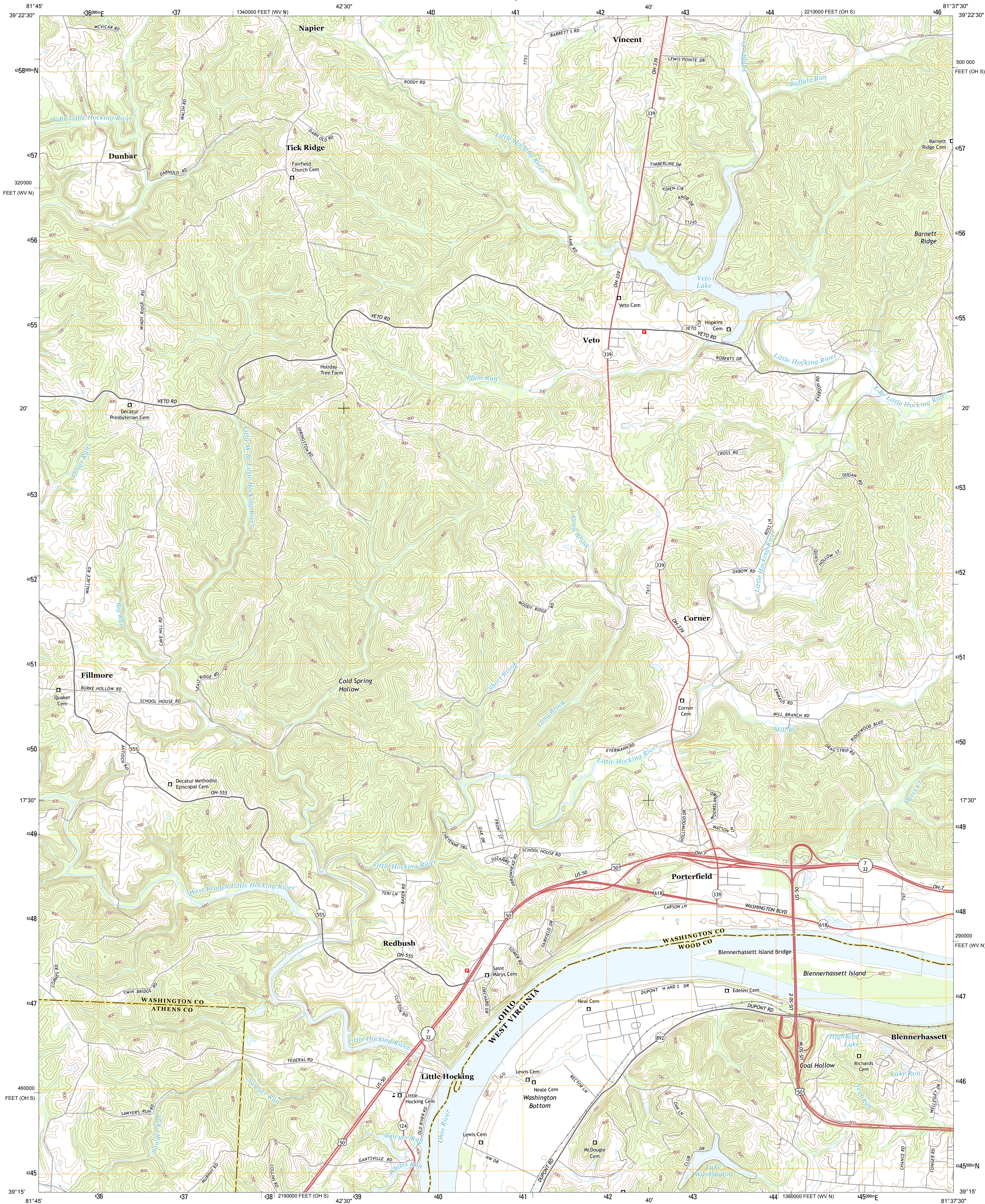




U.S. DEPARTMENT OF THE INTERIOR
U. S. GEOLOGICAL SURVEY



LITTLE HOCKING QUADRANGLE
OHIO-WEST VIRGINIA
7.5-MINUTE SERIES



Produced by the United States Geological Survey
North American Datum of 1983 (NAD83)
World Geodetic System of 1984 (WGS84). Projection and
1 000-meter grid: Universal Transverse Mercator, Zone 17S
10 000-foot ticks: Ohio Coordinate System of 1983 (south zone),
West Virginia Coordinate System of 1983 (north zone)

This map is not a legal document. Boundaries may be
generalized for this map scale. Private lands within government
reservations may not be shown. Obtain permission before
entering private lands.

Imagery.....NAIP, July 2011 - October 2011
Roads.....©2006-2013 TomTom
Names.....GNIS, 2013
Hydrography.....National Hydrography Dataset, 2011
Contours.....National Elevation Dataset, 2010
Boundaries.....Census, IBWC, IBC, USGS, 1972 - 2012
Public Land Survey System.....BLM, 2013

UTM GRID AND 2013 MAGNETIC NORTH
DECLINATION AT CENTER OF SHEET

7° 46'
138 MILS
0° 08'
9 MILS

U.S. National Grid
100,000-m Square ID
MD
Grid Zone Designation
17S

SCALE 1:24 000

1 0.5 0 1 2
1000 500 0 1000 2000
KILOMETERS
1 0.5 0 1 2
1000 500 0 1000 2000
METERS
1 0 1000 2000 3000 4000 5000 6000 7000 8000 9000 10000
MILES
FEET

CONTOUR INTERVAL 20 FEET
NORTH AMERICAN VERTICAL DATUM OF 1988

This map was produced to conform with the
National Geospatial Program US Topo Product Standard, 2011.
A metadata file associated with this product is draft version 0.6.15



Chesterhill	Watertown	Fleming
Cutter	Little Hocking	Parkersburg
Coolville	Lubeck	South Parkersburg

ADJOINING 7.5 QUADRANGLES

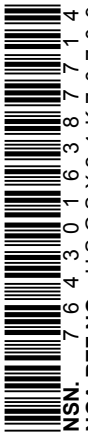
ROAD CLASSIFICATION

Expressway
Secondary Hwy
Ramp

Local Connector
Local Road
4WD

Interstate Route
US Route
State Route

LITTLE HOCKING, OH-WV
2013



NSN 764301 638774 4
NGA REF NO. USGSX24K0709