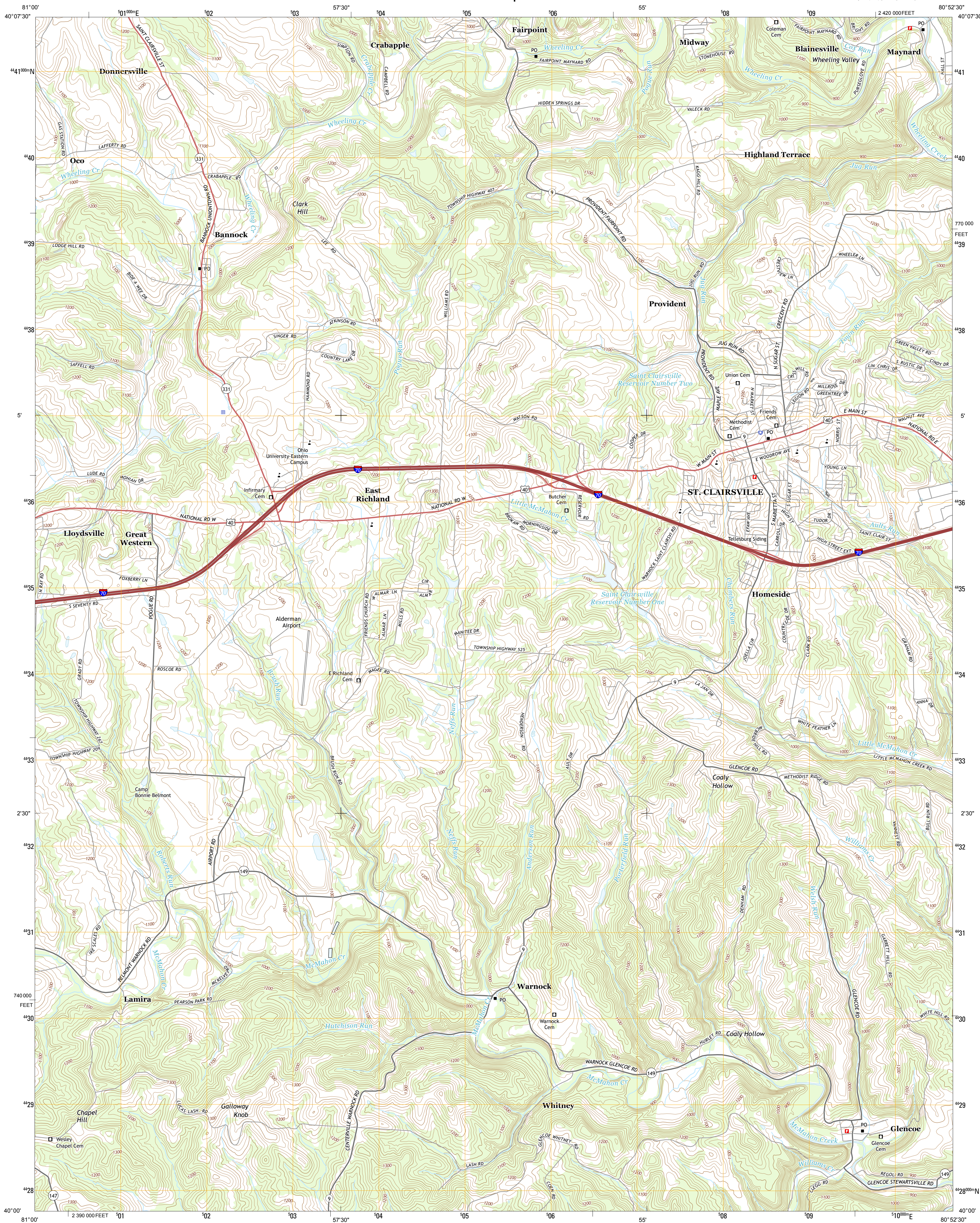




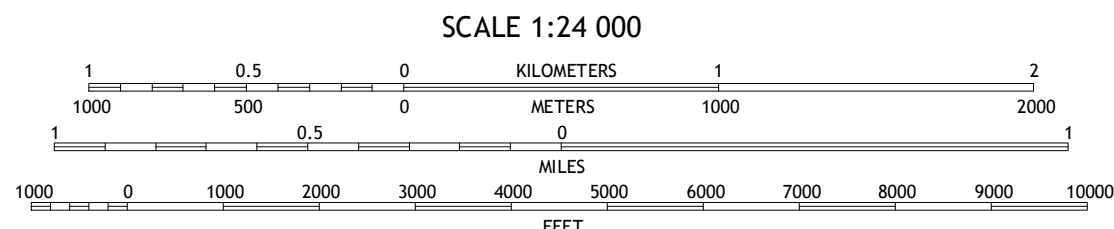
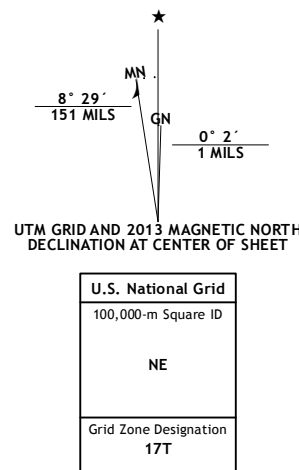
U.S. DEPARTMENT OF THE INTERIOR  
U. S. GEOLOGICAL SURVEY



SAINT CLAIRSVILLE QUADRANGLE  
OHIO-BELMONT CO.  
7.5-MINUTE SERIES



Produced by the United States Geological Survey  
North American Datum of 1983 (NAD83)  
World Geodetic System of 1984 (WGS84). Projection and  
1000-meter grid: Universal Transverse Mercator, Zone 17T  
10 000-foot ticks: Ohio Coordinate System of 1983 (south zone)  
This map is not a legal document. Boundaries may be  
generalized for this map scale. Private lands within government  
reservations may not be shown. Obtain permission before  
entering private lands.  
Imagery.....NAIP, August 2011 - October 2011  
Roads.....©2006-2013 TomTom  
Names.....GNIS, 2013  
Hydrography.....National Hydrography Dataset, 2011  
Contours.....National Elevation Dataset, 2010  
Boundaries.....Census, IBWC, IBC, USGS, 1972 - 2012  
Public Land Survey System.....BLM, 2013



Flushing	Harrisville	Dillonville
Bethesda	Saint Clairsville	Lansing
Hunter	Armstrong's Mills	Businessburg

ROAD CLASSIFICATION  
Expressway  
Secondary Hwy  
Ramp  
Interstate Route  
US Route  
Local Connector  
Local Road  
4WD  
State Route

SAINT CLAIRSVILLE, OH  
2013

