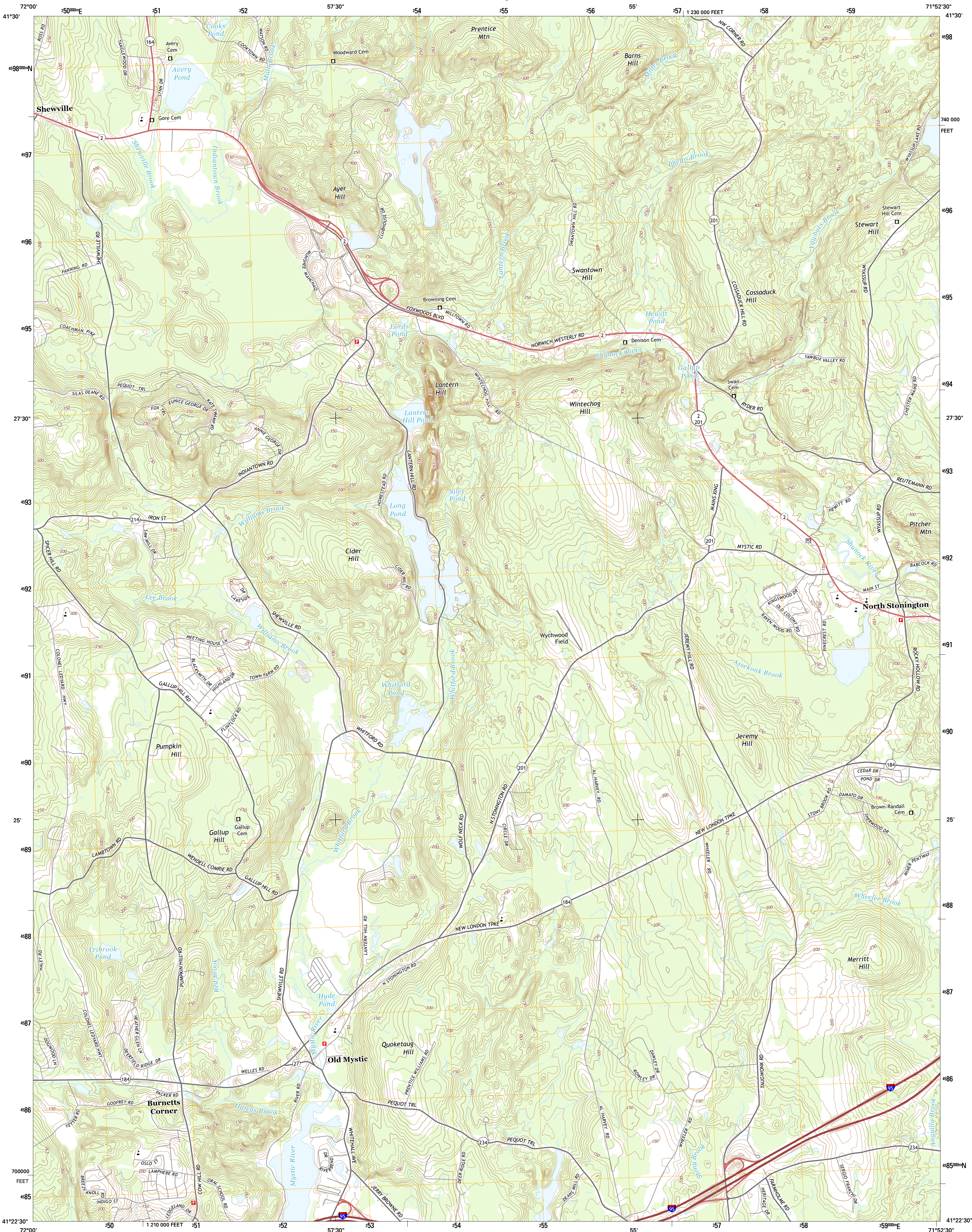




U.S. DEPARTMENT OF THE INTERIOR
U.S. GEOLOGICAL SURVEY



OLD MYSTIC QUADRANGLE
CONNECTICUT-NEW LONDON CO.
7.5-MINUTE SERIES



Produced by the United States Geological Survey
North American Datum of 1983 (NAD83)
World Geodetic System of 1984 (WGS84). Projection and
1 000-meter grid: Universal Transverse Mercator, Zone 18T
10 000-foot ticks: Connecticut Coordinate System of 1983

This map is not a legal document. Boundaries may be
generalized for this map scale. Private lands within government
reservations may not be shown. Obtain permission before
entering private lands.

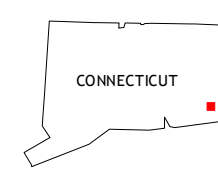
Imagery.....NAIP, July 2014
Roads.....HERE, ©2013 - 2014
Names.....GNIS, 2015
Hydrography.....National Hydrography Dataset, 2014
Contours.....National Elevation Dataset, 2012
Boundaries.....Multiple sources; see metadata file 1972 - 2015

UTM GRID AND 2015 MAGNETIC NORTH
DECLINATION AT CENTER OF SHEET

U.S. National Grid
100,000 m Square ID
BF
Grid Zone Designation
19T

SCALE 1:24 000
1 0.5 0 1 2
1000 500 0 1000 2000
KILOMETERS
1 0.5 0 1 2
1000 500 0 1000 2000
METERS
1 0 1000 2000 3000 4000 5000 6000 7000 8000 9000 10000
MILES
FEET

CONTOUR INTERVAL 10 FEET
NORTH AMERICAN VERTICAL DATUM OF 1988
This map was produced to conform with the
National Geospatial Program US Topo Product Standard, 2011.
A metadata file associated with this product is draft version 0.6.18



ROAD CLASSIFICATION
Expressway
Secondary Hwy
Ramp
Interstate Route
Local Connector
Local Road
4WD
US Route
State Route

ADJOINING QUADRANGLES
1 Norwich
2 Jewett City
3 Voluntown
4 Uncasville
5 Ashaway
6 New London
7 Mystic
8 Watch Hill

OLD MYSTIC, CT
2015

