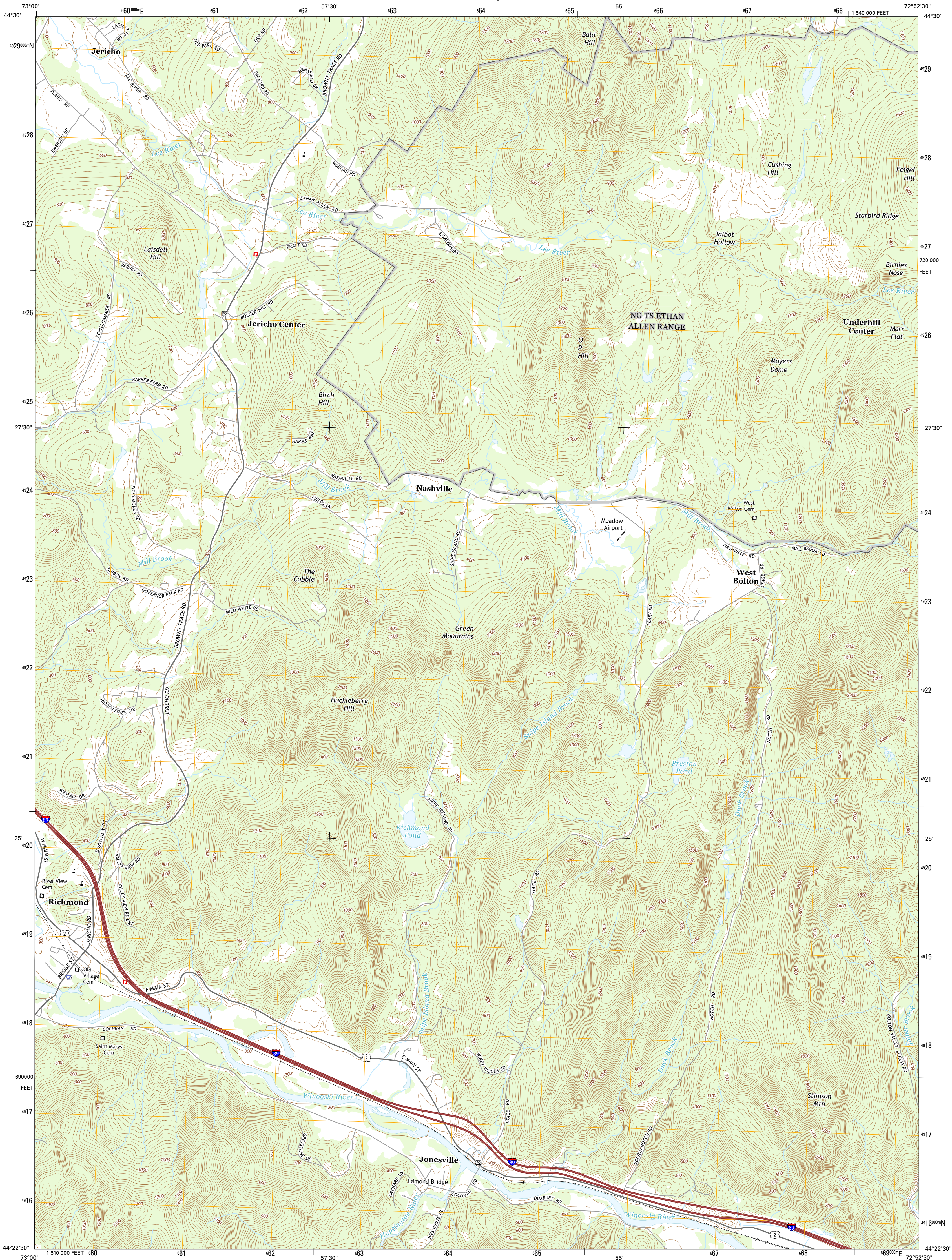




U.S. DEPARTMENT OF THE INTERIOR
U.S. GEOLOGICAL SURVEY



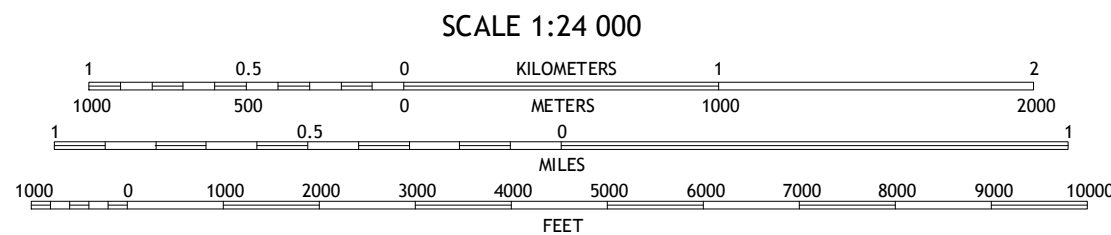
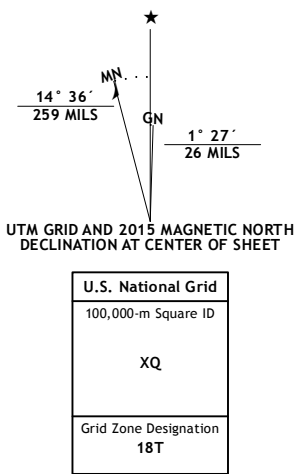
RICHMOND QUADRANGLE
VERMONT-CHITTENDEN CO.
7.5-MINUTE SERIES



Produced by the United States Geological Survey
North American Datum of 1983 (NAD83)
World Geodetic System of 1984 (WGS84). Projection and
1 000-meter grid: Universal Transverse Mercator, Zone 18T
10 000-foot ticks: Vermont Coordinate System of 1983

This map is not a legal document. Boundaries may be
generalized for this map scale. Private lands within government
reservations may not be shown. Obtain permission before
entering private lands.

Imagery.....NAIP, July 2014
Roads.....HERE, ©2013 - 2014
Names.....GNIS, 2015
Hydrography.....National Hydrography Dataset, 2014
Contours.....National Elevation Dataset, 2011
Boundaries.....Multiple sources; see metadata file 1972 - 2015



CONTOUR INTERVAL 20 FEET
NORTH AMERICAN DATUM OF 1983
This map was produced to conform with the
National Geospatial Program US Topo Product Standard, 2011.
A metadata file associated with this product is draft version 0.6.18

ROAD CLASSIFICATION

Expressway	Local Connector
Secondary Hwy	Local Road
Ramp	4WD
Interstate Route	US Route
	State Route

QUADRANGLE LOCATION

VERMONT

ADJOINING QUADRANGLES

1	2	3
4	5	6
7	8	9

1 Essex Center
2 Underhill
3 Mount Mansfield
4 Essex Junction
5 Bolton Mountain
6 Hinesburg
7 Huntington
8 Waterbury

RICHMOND, VT
2015

