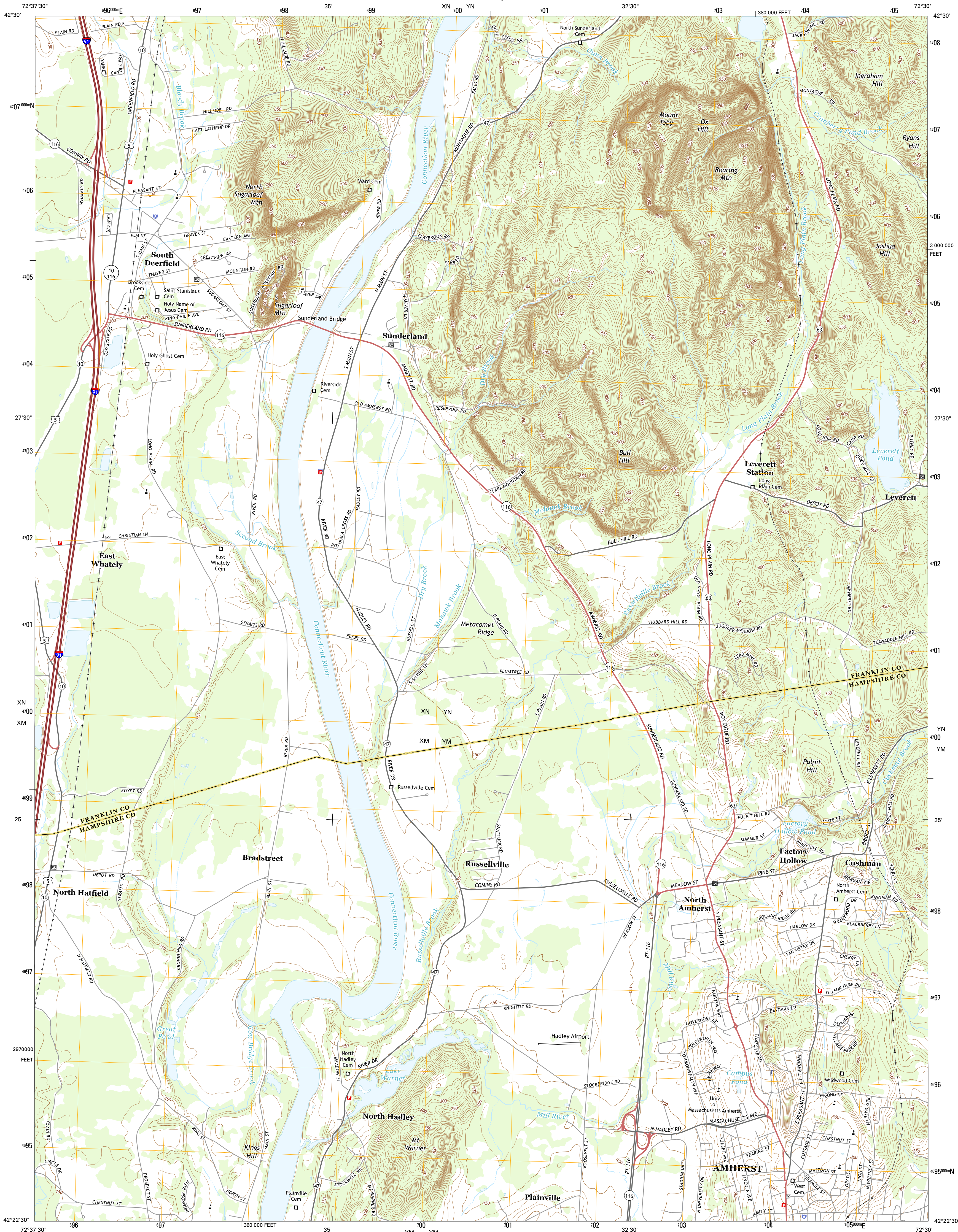




U.S. DEPARTMENT OF THE INTERIOR  
U.S. GEOLOGICAL SURVEY



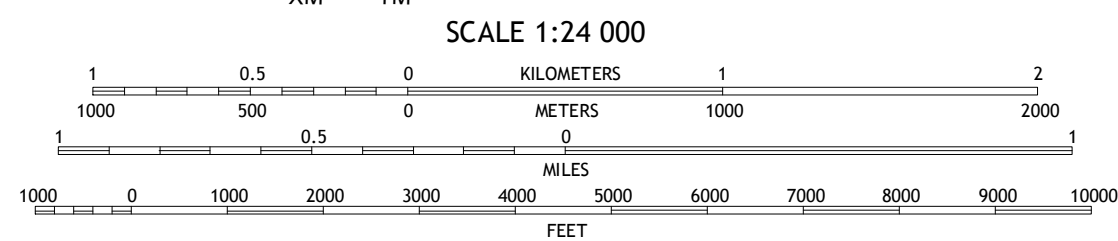
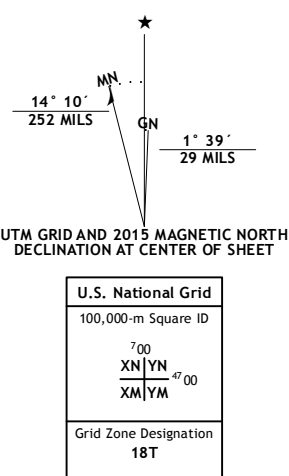
**MOUNT TOBY QUADRANGLE**  
**MASSACHUSETTS**  
**7.5-MINUTE SERIES**



Produced by the United States Geological Survey  
North American Datum of 1983 (NAD83)  
World Geodetic System of 1984 (WGS84). Projection and  
1 000-meter grid: Universal Transverse Mercator, Zone 18T  
10 000-foot ticks: Massachusetts Coordinate System of 1983  
(mainland zone)

This map is not a legal document. Boundaries may be generalized for this map scale. Private lands within government reservations may not be shown. Obtain permission before entering private lands.

Imagery.....	NAIP,	August	2014
Roads.....	HERE,	©2013 -	2014
Names.....	GNIS,		2015
Hydrography.....	National Hydrography Dataset,		2014
Contours.....	National Elevation Dataset,		2012
Boundaries.....	Multiple sources; see metadata file		1972 - 2015



CONTOUR INTERVAL 10 FEET  
NORTH AMERICAN VERTICAL DATUM OF 1988

This map was produced to conform with the  
National Geospatial Program US Topo Product Standard, 2011.  
A metadata file associated with this product is draft version 0.6.18



QUADRANGLE LOCATION

1	2	3	1 Shelburne Falls
4		5	2 Greenfield
6	7	8	3 Millers Falls

ADJOINING QUADRANGLES

- 4 Williamsburg
- 5 Shutesbury
- 6 Easthampton
- 7 Mount Holyoke
- 8 Belchertown

ROAD CLASSIFICATION

Expressway      Local Connector  
Secondary Hwy      Local Road  
Ramp      4WD

 Interstate Route       US Route       State Route

MOUNT TOBY, MA  
2015