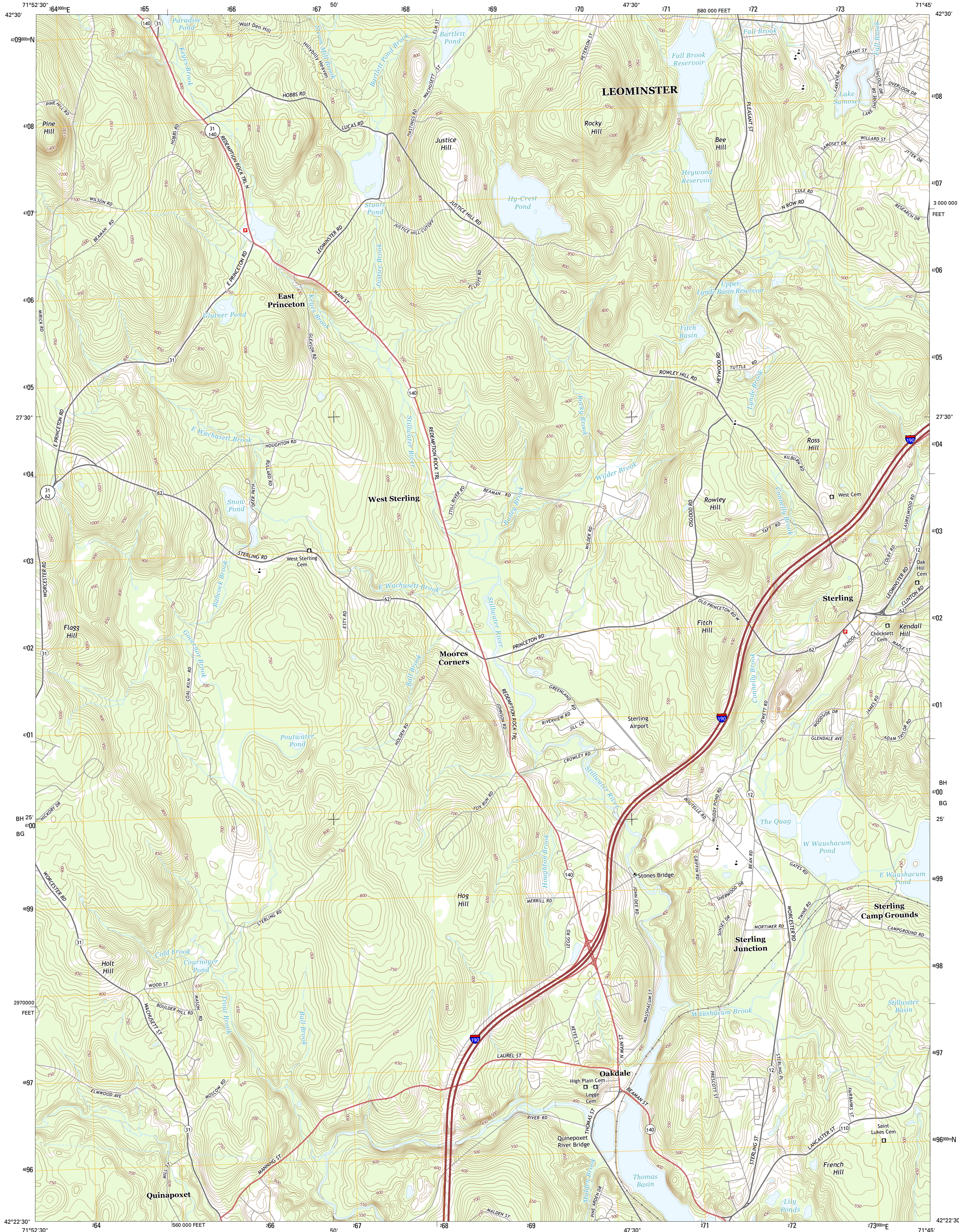




U.S. DEPARTMENT OF THE INTERIOR
U.S. GEOLOGICAL SURVEY



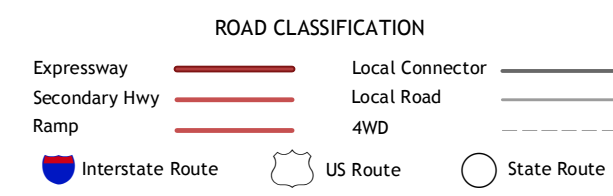
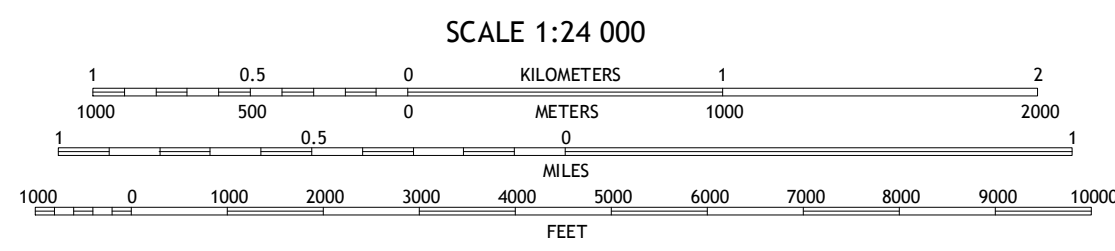
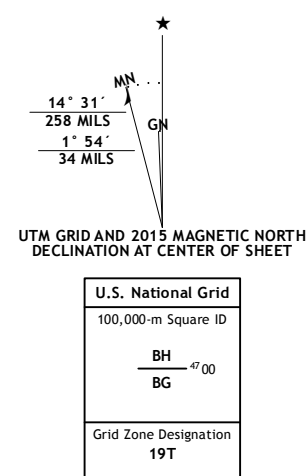
STERLING QUADRANGLE
MASSACHUSETTS-WORCESTER CO.
7.5-MINUTE SERIES



Produced by the United States Geological Survey
North American Datum of 1983 (NAD83)
World Geodetic System of 1984 (WGS84). Projection and
1 000-meter grid: Universal Transverse Mercator, Zone 19T
10 000-foot ticks: Massachusetts Coordinate System of 1983
(mainland zone)

This map is not a legal document. Boundaries may be
generalized for this map scale. Private lands within government
reservations may not be shown. Obtain permission before
entering private lands.

Imagery.....NAIP, July 2014
Roads.....HERE, ©2013 2014
Names.....GNIS, 2015
Hydrography.....National Hydrography Dataset, 2014
Contours.....National Elevation Dataset, 2012
Boundaries.....Multiple sources; see metadata file 1972 - 2015



1	2	3
4	5	6
7	8	

ADJOINING QUADRANGLES

1 Gardner
2 Fitchburg
3 Shirley
4 Wachusett Mountain
5 Clinton
6 Paxton
7 Worcester North
8 Shrewsbury

STERLING, MA
2015

