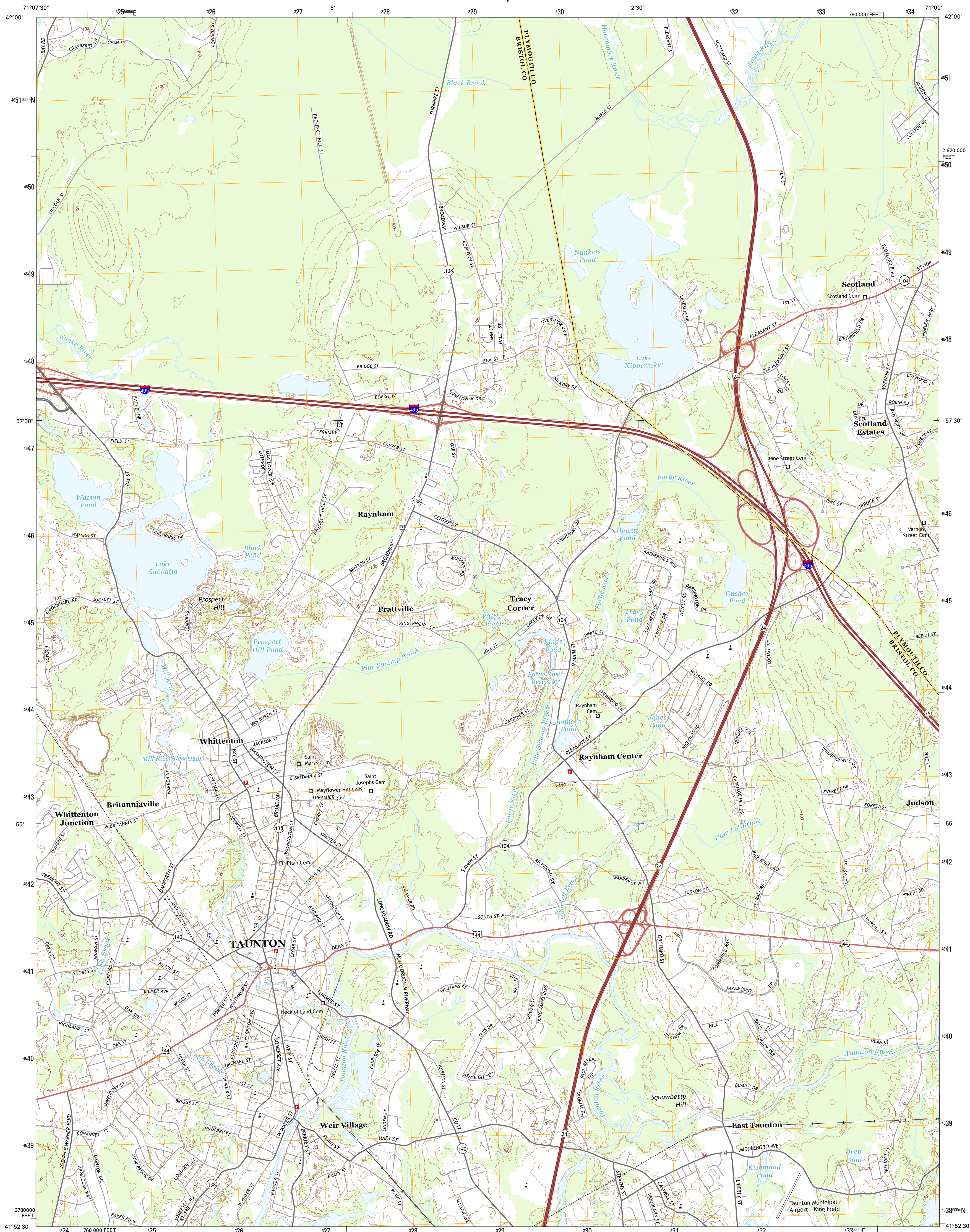




U.S. DEPARTMENT OF THE INTERIOR
U.S. GEOLOGICAL SURVEY



TAUNTON QUADRANGLE
MASSACHUSETTS
7.5-MINUTE SERIES



Produced by the United States Geological Survey
North American Datum of 1983 (NAD83)
World Geodetic System of 1984 (WGS84). Projection and
1 000-meter grid: Universal Transverse Mercator, Zone 19T
10 000-foot ticks: Massachusetts Coordinate System of 1983
(mainland zone)

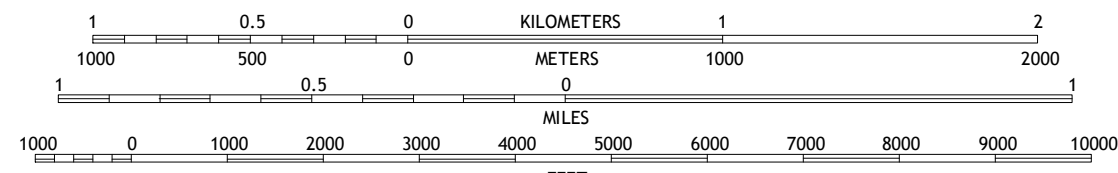
This map is not a legal document. Boundaries may be generalized for this map scale. Private lands within government reservations may not be shown. Obtain permission before entering private lands.

Imagery.....	NAIP, July	2014
Roads.....	HERE, ©2013	2014
Names.....	GNIS,	2015
Hydrography.....	National Hydrography Dataset,	2014
Contours.....	National Elevation Dataset,	2012
Boundaries.....	Multiple sources; see metadata file	1972 - 2015

UTM GRID AND 2015 MAGNETIC NORTH DECLINATION AT CENTER OF SHEET

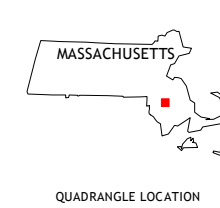
U.S. National Grid
100,000-m Square ID
CG
Grid Zone Designation
19T

SCALE 1:24 000



CONTOUR INTERVAL 10 FEET
NORTH AMERICAN VERTICAL DATUM OF 1988

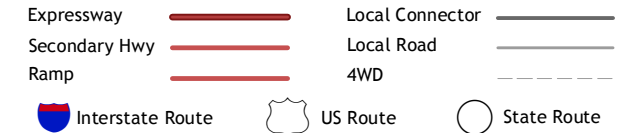
This map was produced to conform with the
Geospatial Program US Topo Product Standard, 2011.
A file associated with this product is draft version 0.6.18



1	2	3	1 Mansfield
4		5	2 Brockton
6	7	8	3 Whitman
			4 Norton
			5 Bridgewater
			6 Somerset
			7 Assonet
			8 Assawompset Pond

ADJOINING QUADRANGLES

ROAD CLASSIFICATION



TAUNTON, MA
2015

