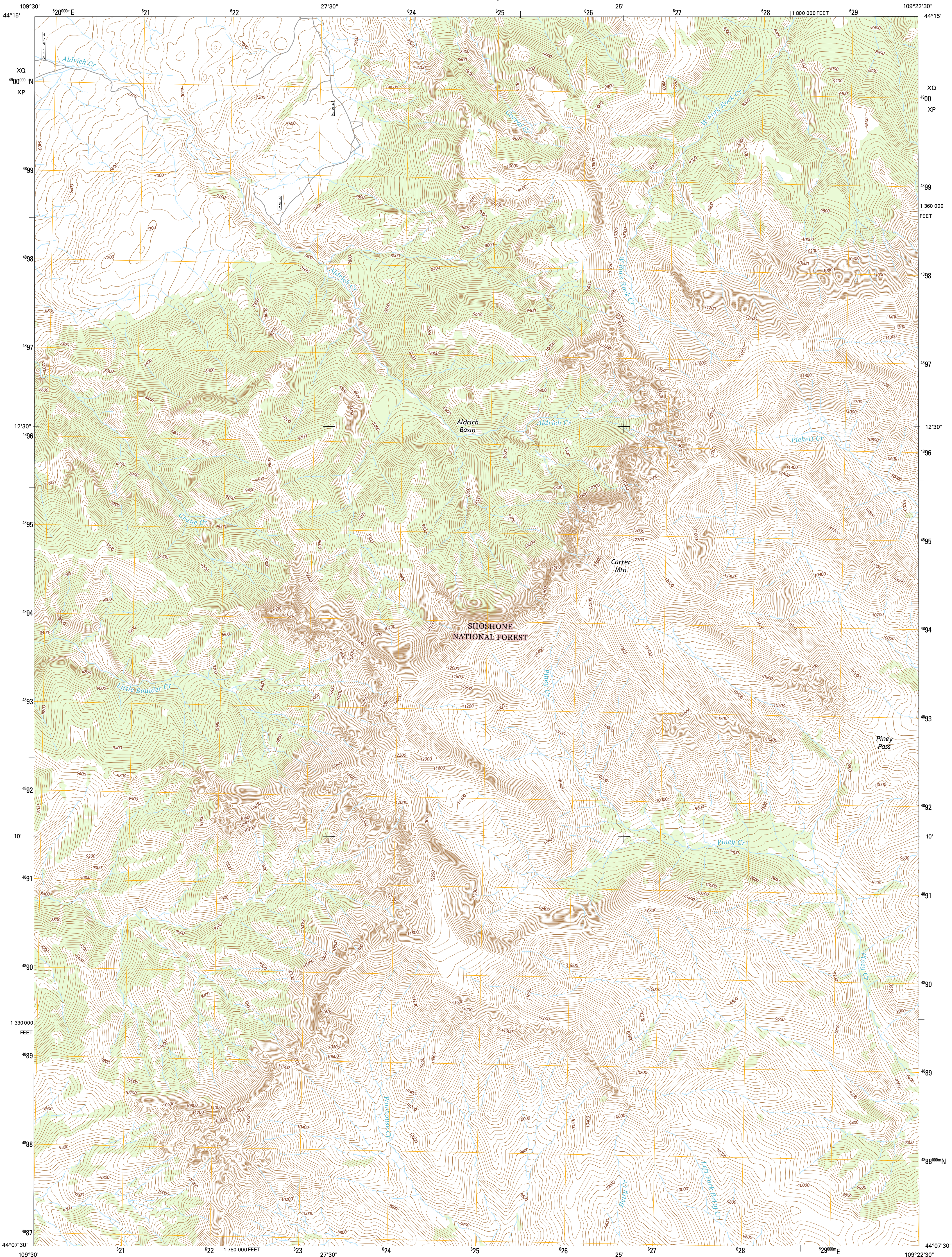




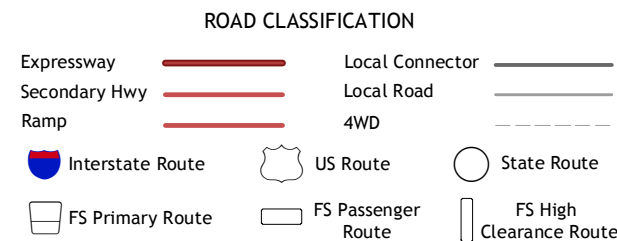
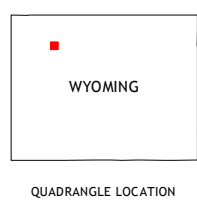
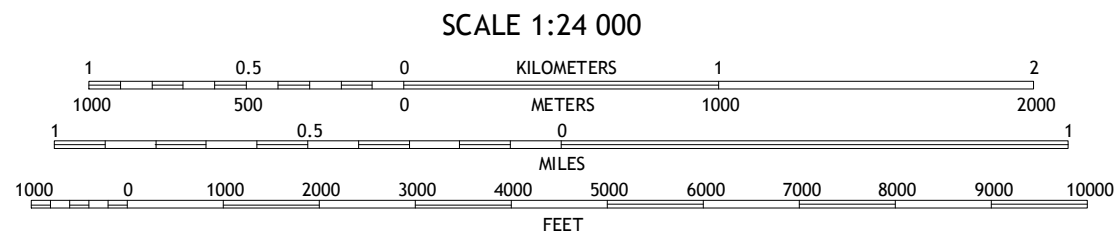
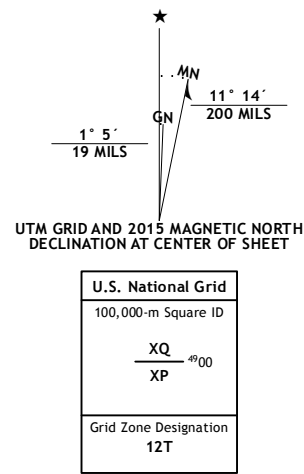
U.S. DEPARTMENT OF THE INTERIOR
U.S. GEOLOGICAL SURVEY



ALDRICH BASIN QUADRANGLE
WYOMING-PARK CO.
7.5-MINUTE SERIES



Produced by the United States Geological Survey
North American Datum of 1983 (NAD83)
World Geodetic System of 1984 (WGS84), Projection and
1 000-meter grid: Universal Transverse Mercator, Zone 12T
10 000-foot ticks: Wyoming Coordinate System of 1983 (west
central zone)
This map is not a legal document. Boundaries may be
generalized for this map scale. Private lands within government
reservations may not be shown. Obtain permission before
entering private lands.
Imagery.....NAIP, July 2012
Roads.....HERE, ©2013 - 2014
Roads within US Forest Service Lands.....FSTopo Data
with limited Forest Service updates, 2012 - 2015
Names.....National Hydrography Dataset, 2012
Contours.....National Elevation Dataset, 2000
Boundaries.....Multiple sources: see metadata file 1972 - 2015
Public Land Survey System.....BLM, 2011



Check with local Forest Service unit
for current travel conditions and restrictions.

ALDRICH BASIN, WY
2015

| | | | |
|---|---|----------------------------|----------------------|
| 1 | 2 | 3 | 1 Ptarmigan Mountain |
| 4 | 5 | 2 Twin Creek | |
| 6 | 7 | 3 Belknap Creek | |
| | 8 | 4 Valley | |
| | | 5 North Fork Pickett Creek | |
| | | 6 Needle Mountain | |
| | | 7 Irish Rock | |
| | | 8 Phelps Mountain | |

