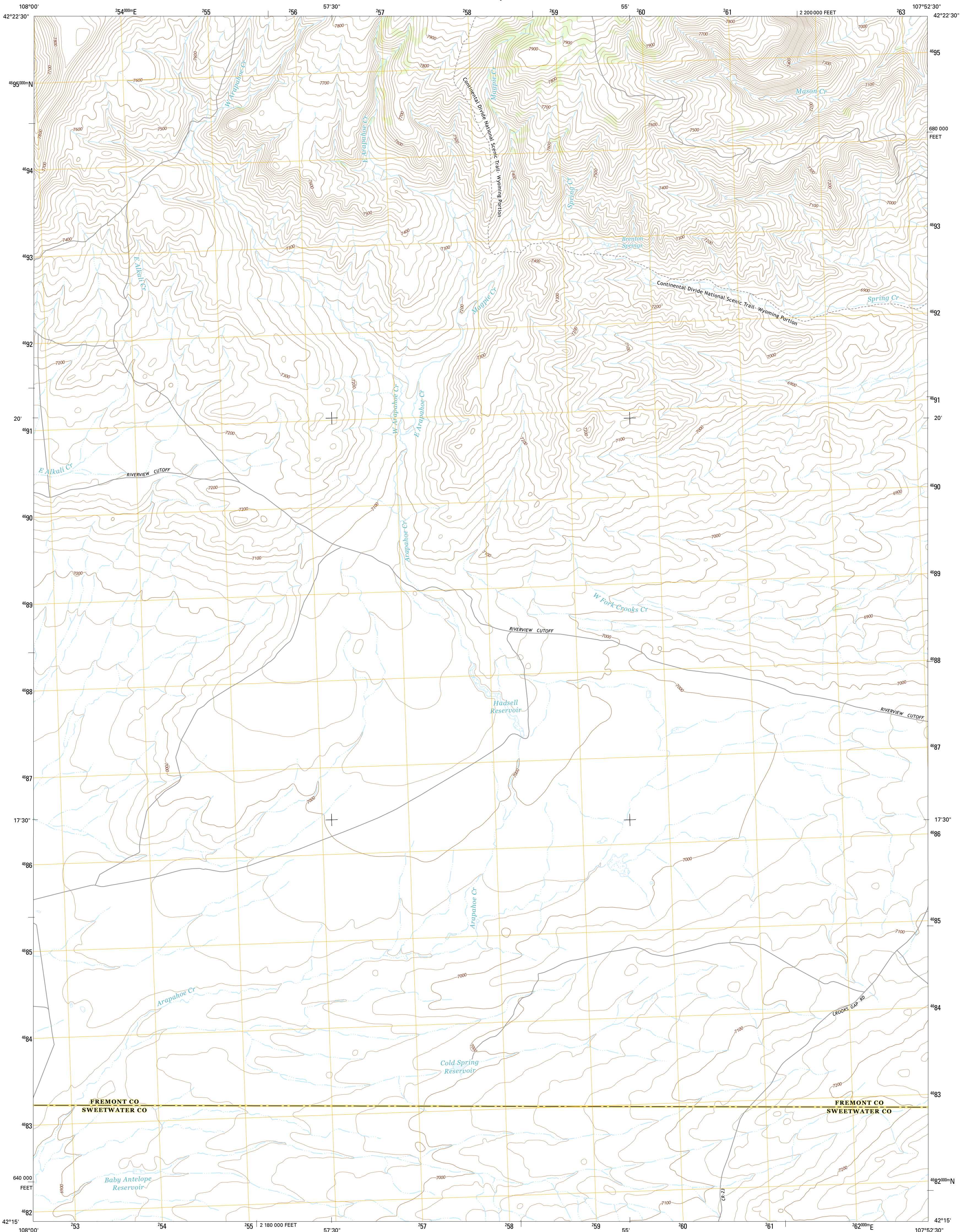




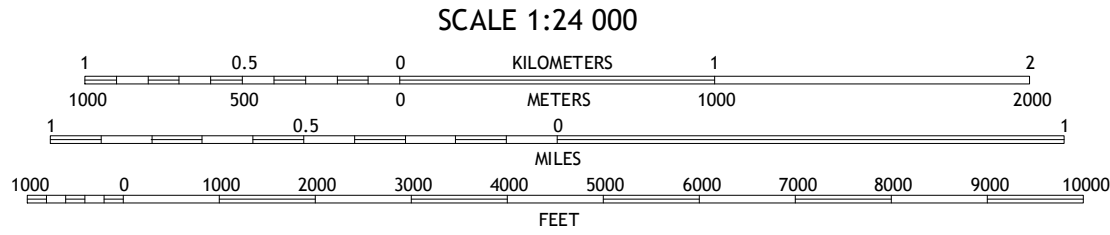
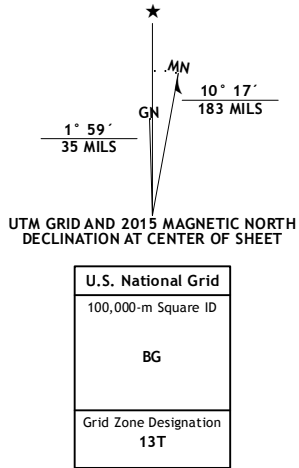
U.S. DEPARTMENT OF THE INTERIOR  
U.S. GEOLOGICAL SURVEY



BRENTON SPRINGS QUADRANGLE  
WYOMING  
7.5-MINUTE SERIES



**Produced by the United States Geological Survey**  
North American Datum of 1983 (NAD83)  
World Geodetic System of 1984 (WGS84). Projection and  
1 000 meter grid; Universal Transverse Mercator; Zone 13T  
10 000-foot ticks; Wyoming Coordinate System of 1983 (west  
central zone)  
  
This map is not a legal document. Boundaries may be  
generalized for this map scale. Private lands within government  
reservations may not be shown. Obtain permission before  
entering private lands.  
  
Imagery.....NAIP, August, 2012  
Roads.....HERE, 6/2013 - 2014  
Names.....GNIS, 2015  
Hydrography.....National Hydrography Dataset, 2012  
Contours.....National Elevation Dataset, 2009  
Boundaries.....Multiple sources; see metadata file 1972 - 2015  
Public Land Survey System.....BLM, 2011

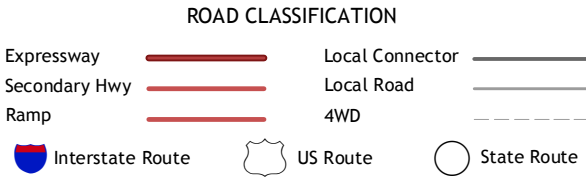


CONTOUR INTERVAL 20 FEET  
NORTH AMERICAN VERTICAL DATUM OF 1988  
  
This map was produced to conform with the  
National Geospatial Program US Topo Product Standard, 2011.  
A metadata file associated with this product is draft version 0.6.18

1	2	3
4	5	6
7	8	

ADJOINING QUADRANGLES

- 1 Soap Holes
- 2 Crooks Mountain
- 3 Jeffrey City
- 4 Lost Creek Reservoir
- 5 Crooks Peak
- 6 Osborne Draw
- 7 Antelope Reservoir
- 8 Osborne Well



BRENTON SPRINGS, WY  
2015

