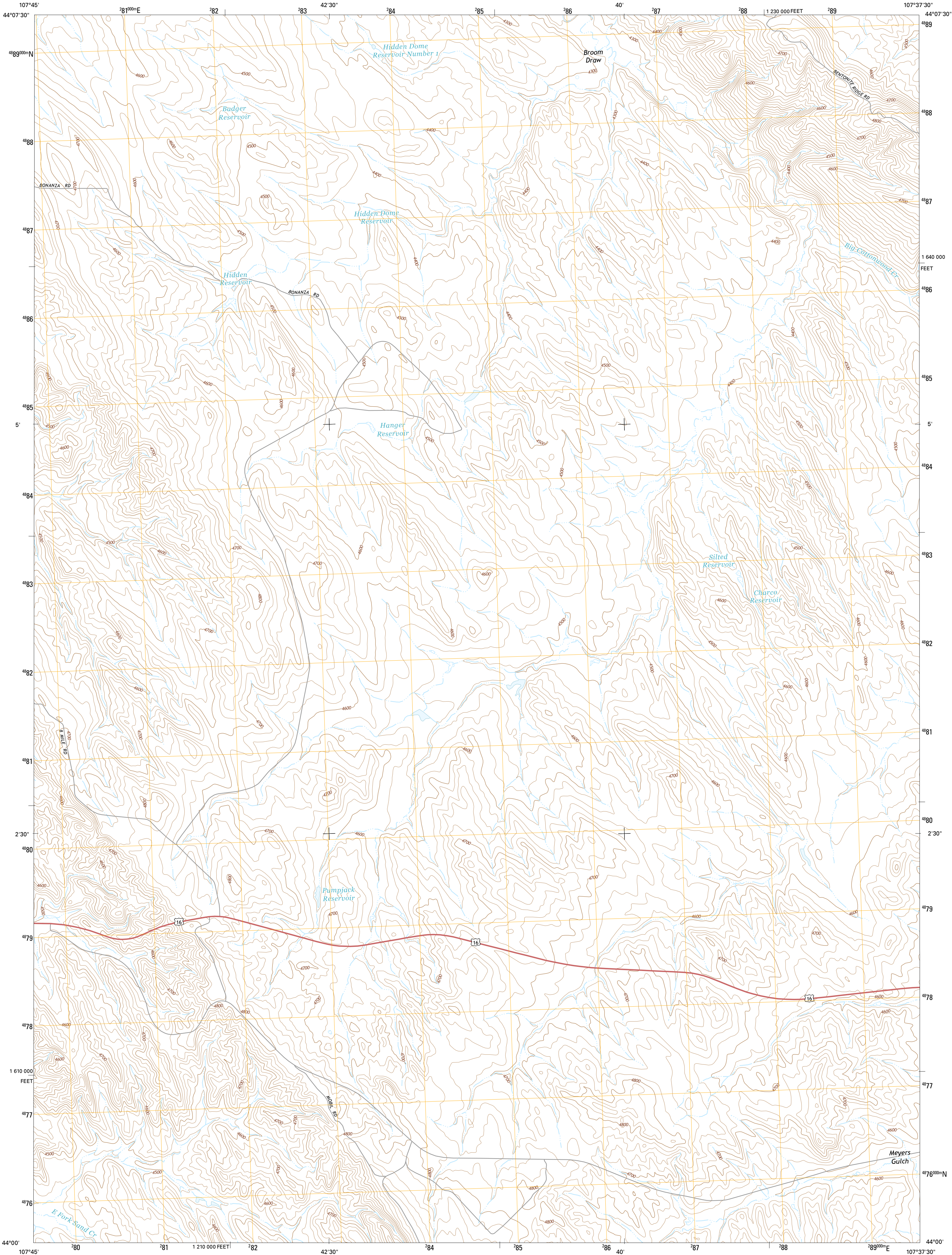




U.S. DEPARTMENT OF THE INTERIOR
U.S. GEOLOGICAL SURVEY



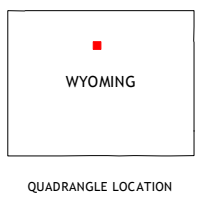
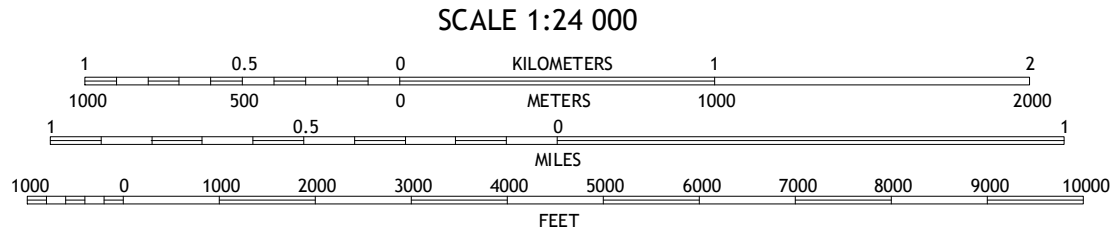
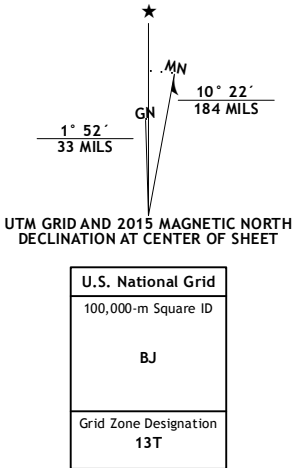
BROOM DRAW QUADRANGLE
WYOMING-WASHAKIE CO.
7.5-MINUTE SERIES



Produced by the United States Geological Survey
North American Datum of 1983 (NAD83)
World Geodetic System of 1984 (WGS84), Projection and
1 000-meter grid: Universal Transverse Mercator, Zone 13T
10 000-foot ticks: Wyoming Coordinate System of 1983 (east
central zone)

This map is not a legal document. Boundaries may be
generalized for this map scale. Private lands within government
reservations may not be shown. Obtain permission before
entering private lands.

Imagery.....N.A.P. July 2012
Roads.....HERE, ©2013 - 2014
Names.....GNIS, 2015
Hydrography.....National Hydrography Dataset, 2012
Contours.....National Elevation Dataset, 2011
Boundaries.....Multiple sources; see metadata file 1972 - 2015
Public Land Survey System.....BLM, 2011



ROAD CLASSIFICATION
Expressway Local Connector
Secondary Hwy Local Road
Ramp 4WD
Interstate Route US Route State Route

1	2	3
4	5	
6	7	8

ADJOINING QUADRANGLES

1 McDermott Butte
2 Weintz Draw
3 Hyattville
4 Worland SE
5 Wild Horse Hill
6 Banjo Flats East
7 Cabin Fork
8 Castle Gardens

BROOM DRAW, WY
2015

