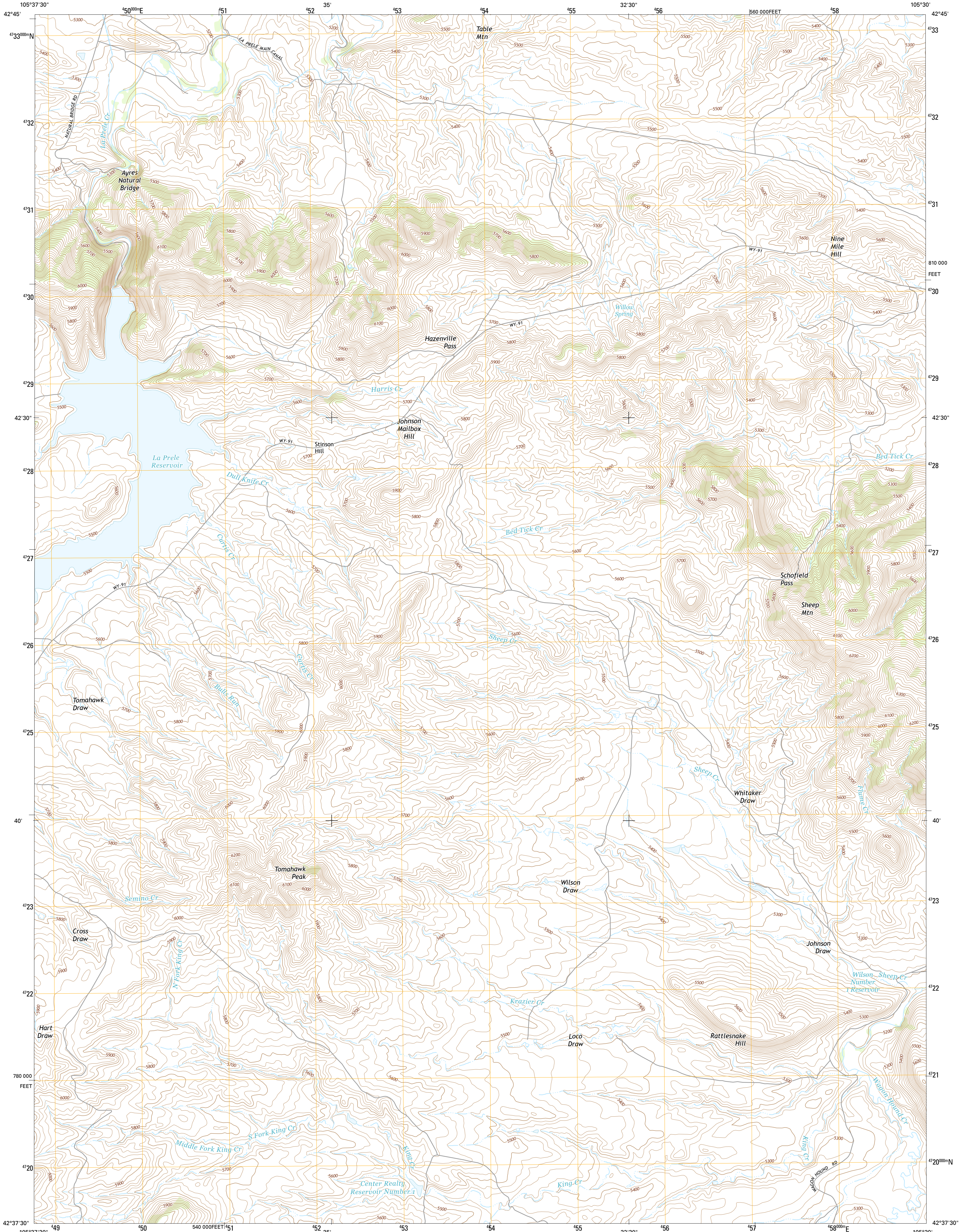




U.S. DEPARTMENT OF THE INTERIOR
U.S. GEOLOGICAL SURVEY



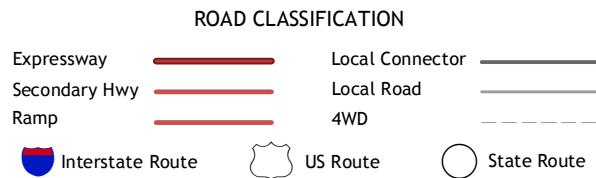
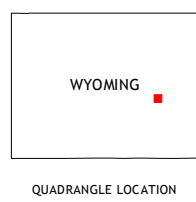
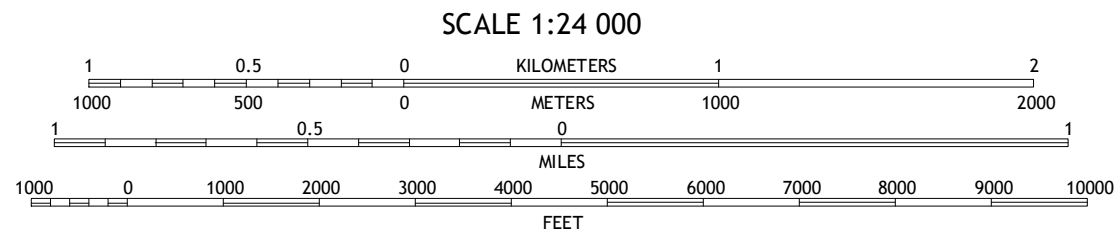
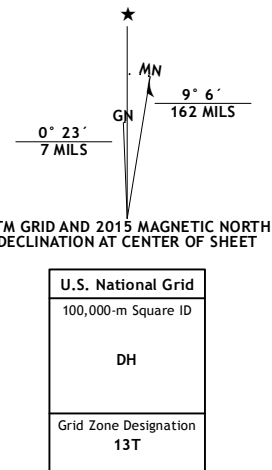
LA PRELE RESERVOIR QUADRANGLE
WYOMING-CONVERSE CO.
7.5-MINUTE SERIES



Produced by the United States Geological Survey
North American Datum of 1983 (NAD83)
World Geodetic System of 1984 (WGS84). Projection and
1 000-meter grid: Universal Transverse Mercator, Zone 13T
10 000-foot ticks: Wyoming Coordinate System of 1983 (east zone)

This map is not a legal document. Boundaries may be
generalized for this map scale. Private lands within government
reservations may not be shown. Obtain permission before
entering private lands.

Imagery.....NAIP, June 2012
Roads.....HERE, ©2013 - 2014
Names.....GNIS, 2015
Hydrography.....National Hydrography Dataset, 2012
Contours.....National Elevation Dataset, 2009
Boundaries.....Multiple sources; see metadata file 1972 - 2015
Public Land Survey System.....BLM, 2011



1	2	3
4	5	6
7	8	9

ADJOINING QUADRANGLES

LA PRELE RESERVOIR, WY
2015

