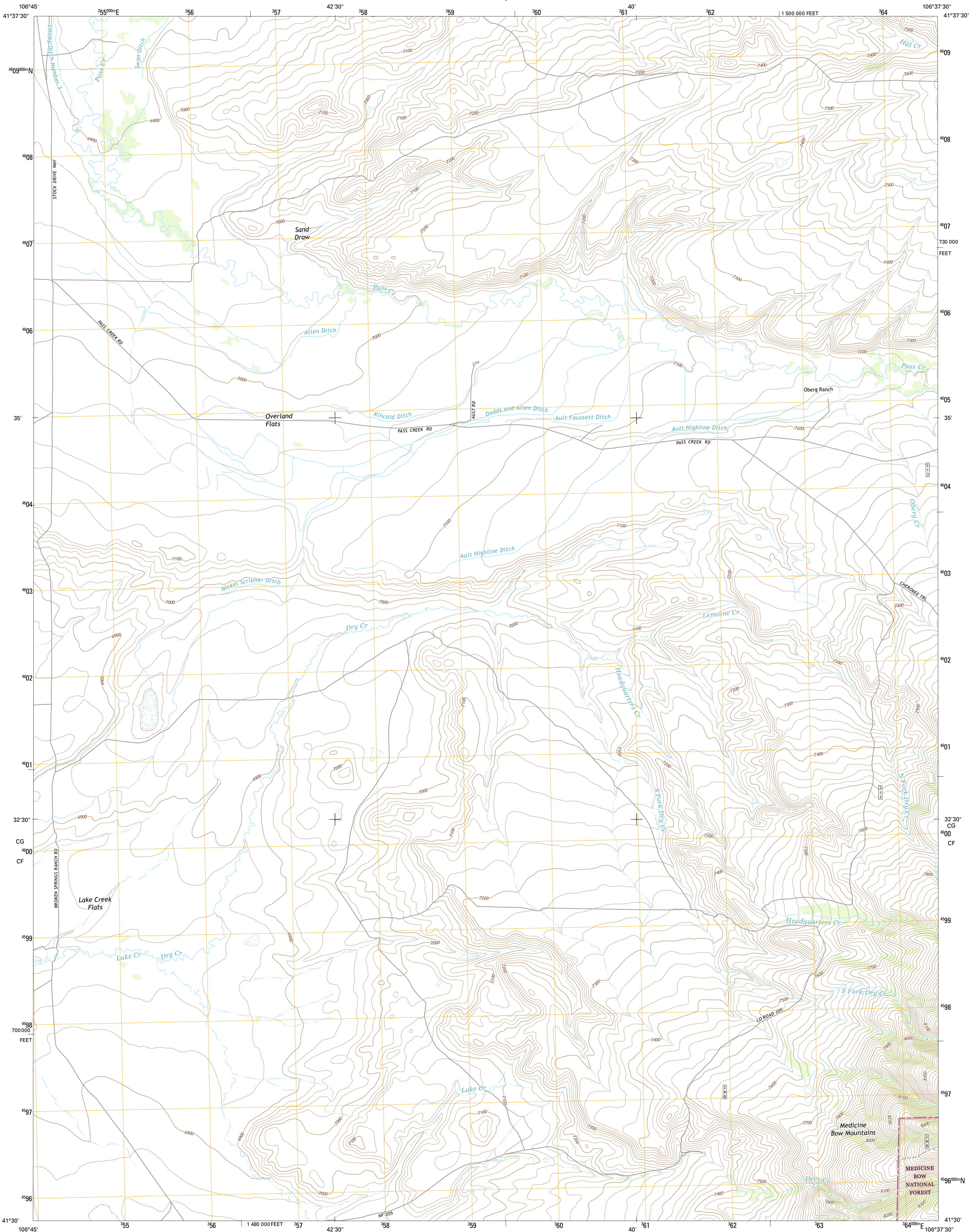




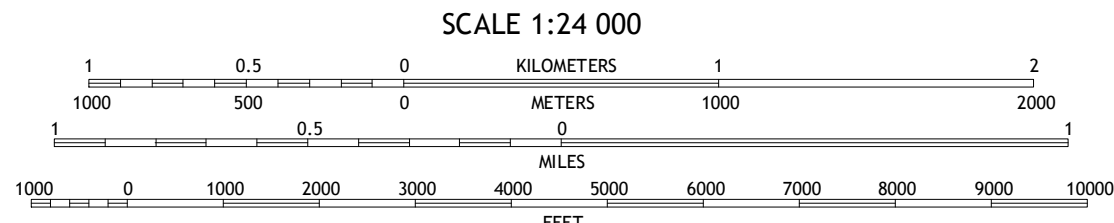
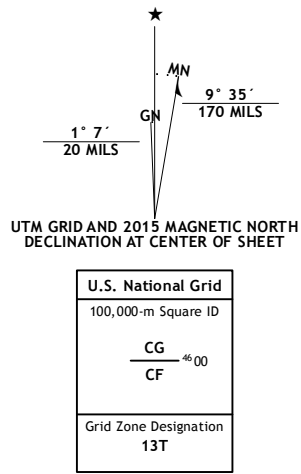
U.S. DEPARTMENT OF THE INTERIOR  
U.S. GEOLOGICAL SURVEY



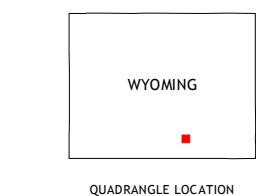
OBERG RANCH QUADRANGLE  
WYOMING-CARBON CO.  
7.5-MINUTE SERIES



**Produced by the United States Geological Survey**  
North American Datum of 1983 (NAD83)  
World Geodetic System of 1984 (WGS84). Projection and  
1 000-meter grid: Universal Transverse Mercator, Zone 13T  
10 000-foot ticks: Wyoming Coordinate System of 1983 (east  
central zone)  
  
This map is not a legal document. Boundaries may be  
generalized for this map scale. Private lands within government  
reservations may not be shown. Obtain permission before  
entering private lands.  
  
Imagery.....NAIP, August 2012  
Roads.....HERE, ©2013 - 2014  
Roads within US Forest Service Lands.....FSTopo Data  
with limited Forest Service updates, 2012 - 2015  
Names.....National Hydrography Dataset, 2015  
Hydrography.....National Hydrography Dataset, 2012  
Contours.....National Elevation Dataset, 2006  
Boundaries.....Multiple sources; see metadata file 1972 - 2015  
Public Land Survey System.....BLM, 2011



CONTOUR INTERVAL 20 FEET  
NORTH AMERICAN VERTICAL DATUM OF 1988  
  
This map was produced to conform with the  
National Geospatial Program US Topo Product Standard, 2011.  
A metadata file associated with this product is draft version 0.6.18



|   |   |   |
|---|---|---|
| 1 | 2 | 3 |
| 4 | 5 | 6 |
| 7 | 8 |   |

ADJOINING QUADRANGLES

1 Meads  
2 Coal Bank Basin  
3 Rattlesnake Pass  
4 Overland  
5 Coad Mountain  
6 Saratoga  
7 Finley Reservoir  
8 Kennedy Peak

| ROAD CLASSIFICATION |                         |
|---------------------|-------------------------|
| Expressway          | Local Connector         |
| Secondary Hwy       | Local Road              |
| Ramp                | 4WD                     |
| Interstate Route    | US Route                |
| FS Primary Route    | FS Passenger Route      |
|                     | State Route             |
|                     | FS High Clearance Route |

Check with local Forest Service unit  
for current travel conditions and restrictions.

OBERG RANCH, WY  
2015

