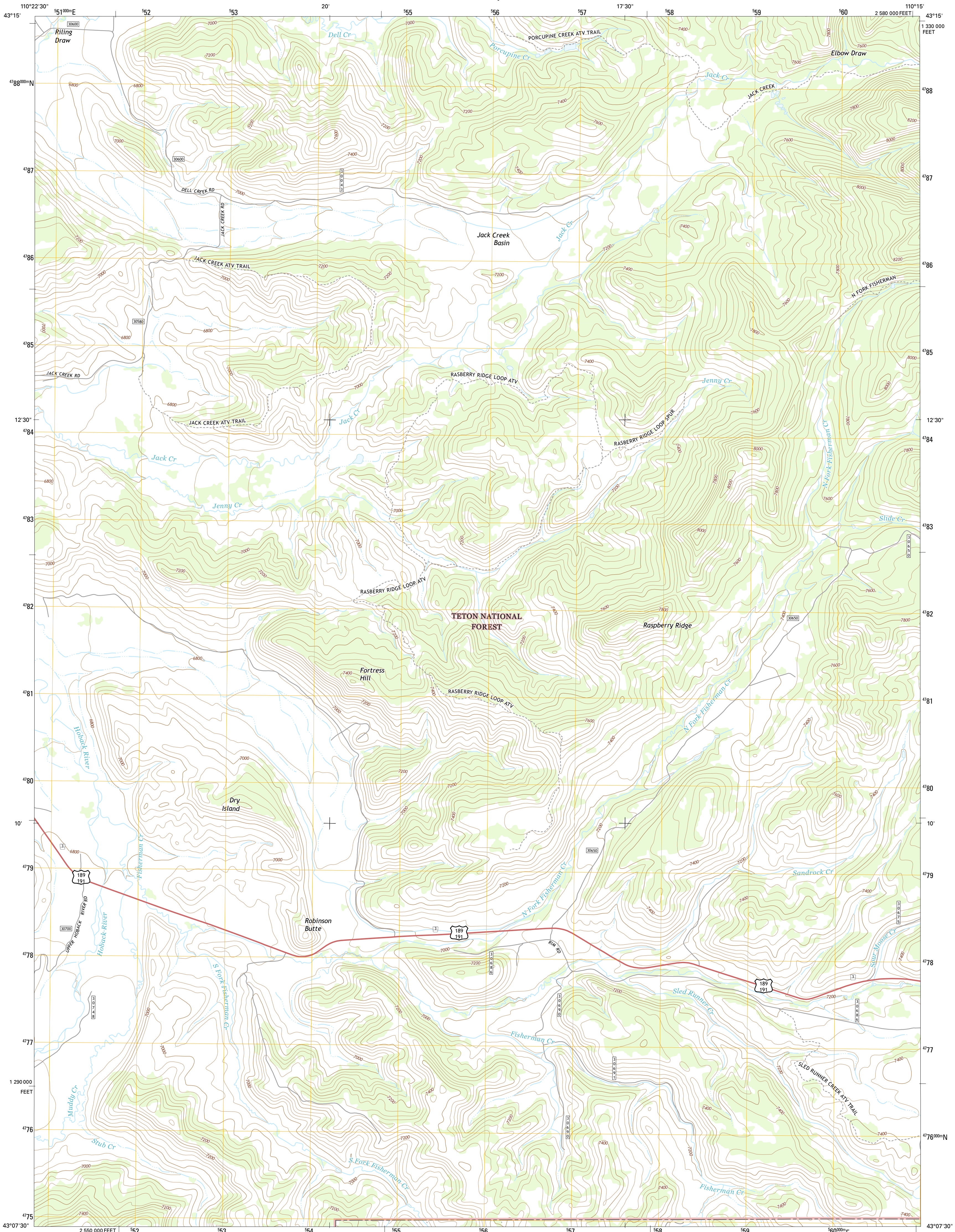




U.S. DEPARTMENT OF THE INTERIOR
U.S. GEOLOGICAL SURVEY



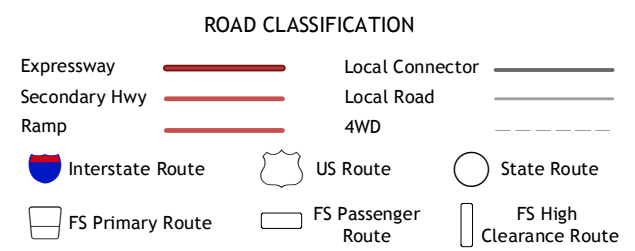
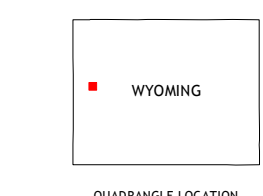
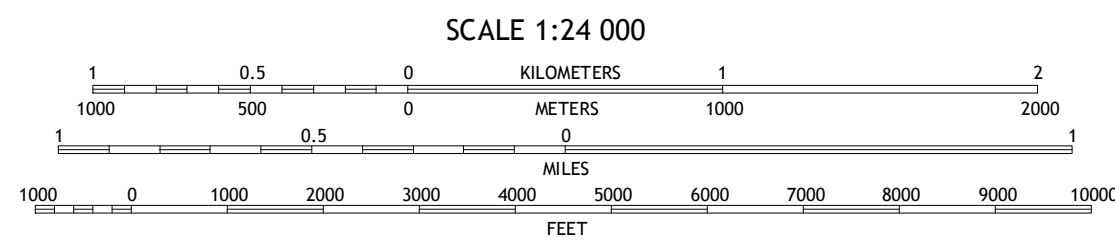
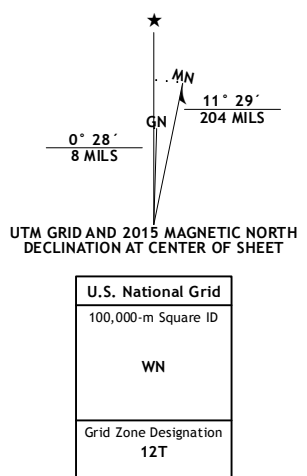
RASPBERRY RIDGE QUADRANGLE
WYOMING-SUBLETTE CO.
7.5-MINUTE SERIES



Produced by the United States Geological Survey
North American Datum of 1983 (NAD83)
World Geodetic System of 1984 (WGS84) Projection and
1 000-meter grid: Universal Transverse Mercator, Zone 12T
10 000-foot ticks: Wyoming Coordinate System of 1983 (west zone)

This map is not a legal document. Boundaries may be generalized for this map scale. Private lands within government reservations may not be shown. Obtain permission before entering private lands.

Imagery.....NAIP, August 2012
Roads.....HERE, ©2013 - 2014
Roads within US Forest Service Lands.....FSTopo Data with limited Forest Service updates, 2012 - 2015
Names.....GNR, 2015
Hydrography.....National Hydrography Dataset, 2012
Contours.....National Elevation Dataset, 2000
Boundaries.....Multiple sources; see metadata file 1972 - 2015
Public Land Survey System.....BLM, 2011



1	2	3
4	5	6
7	8	9

1 Granite Falls
2 Doubletop Peak
3 Tosi Peak
4 Bonduant
5 Pass Peak
6 Noble Basin
7 Momet Peak
8 Signal Hill

Check with local Forest Service unit for current travel conditions and restrictions.

RASPBERRY RIDGE, WY
2015

